

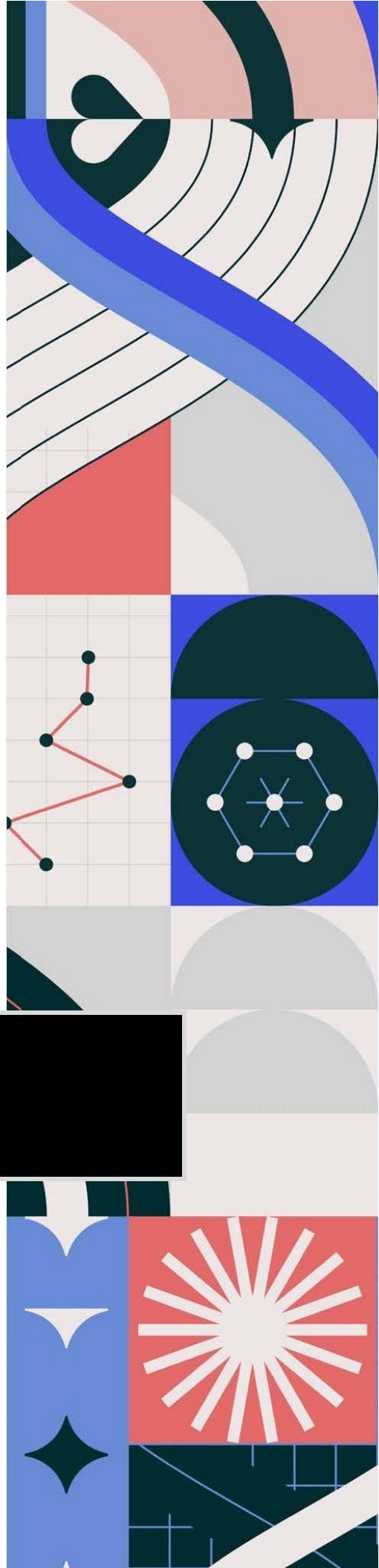


LEHIGH
UNIVERSITY

College
of Health

Class of
2026
Fall 2022

*Course Registration &
Information Packet*



Welcome from the Dean



Elizabeth A. Dolan, PhD
Interim Dean

Dear College of Health Class of 2026,

I am delighted to welcome you to the College of Health at Lehigh University. Congratulations on your acceptance into the College!

Do you want to play a role in preventing the next pandemic, or in improving health outcomes domestically and globally, or in coming up with entrepreneurial ideas for preventing and treating chronic disease? All of these are possibilities for your future now that you've chosen the College of Health. For those of you interested in careers in medicine, dentistry, or veterinary medicine, completing a degree in the College of Health will give you a unique perspective and a strong skill set that will set you apart from other applicants to these professional programs.

You were accepted into the College of Health because we are inspired by your desire to make a difference in the world's health, and impressed by your qualifications. We are confident that you will excel in either of our two majors--the B.S. in Population Health, in which you will learn about the multiple determinants of health, data analytics, and epidemiology, or our B.A. in Community and Global Health, in which you will learn about the multiple determinants of health, and how to design, implement, and evaluate health interventions for communities in the U.S. and abroad. We are also excited to offer six [minor programs](#), which you can read more about on our website.

You will be the third class of students to graduate from the College of Health, and the first to have access to the beautiful new Health, Science, and Technology building—the largest and most modern research facility that Lehigh has ever built.

Please join us in June for "COH 101," virtual sessions designed to introduce you to what your life as a COH student will be like. In these sessions, you'll hear about the different classes in COH, meet some of our faculty, explore the careers you can consider with either of our degrees, and learn about how to register for classes.

We hope to see you on Zoom this summer, and REALLY look forward to meeting you in person in the Fall.

Welcome!

Warmly,

A handwritten signature in black ink that reads "Elizabeth A. Dolan".

The College of Health Team

The faculty, staff and leadership of the College of Health are a support system for students throughout their time at Lehigh. For a list of personnel and their contact information, click on the links below.

- [College Leadership](#)
- [Staff](#)
- [Faculty](#)

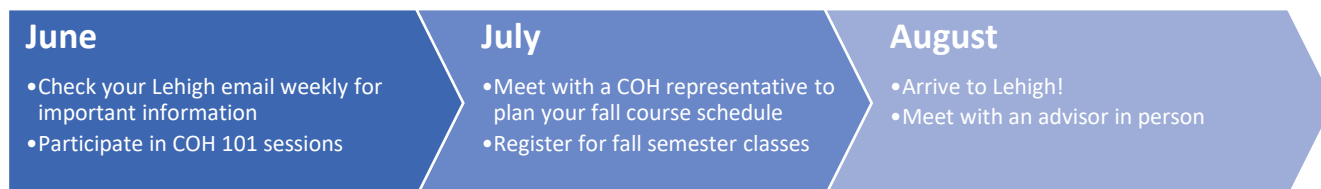
Advising and Support

Advising Structure

All first-year students will be advised by a faculty or staff member who will guide students on building their first semester schedule and answering curriculum related questions. In August, students are assigned an adviser who will serve as a resource to the student throughout their undergraduate career at Lehigh. Once a concentration is selected, students may be assigned a faculty mentor whose purpose is to provide direction and input on experiential learning opportunities in relation to the area of concentration, career guidance and post graduate education advice. For support, you can reach out by email at cohadvicing@lehigh.edu.

Summer Timeline

Throughout the summer, students will receive a series of correspondences from various campus departments aimed to help them prepare for their first semester at Lehigh. **It is important to check your Lehigh email address weekly for these communications.** An email will be sent out soon from the COH Advising account (cohadvicing@lehigh.edu) letting you know all about “COH 101,” a series of virtual information sessions and when those sessions will be held in June. One of these sessions will be dedicated to course planning and registration. In July, students should meet with a COH advisor to help plan their fall semester courses.



Health Professions Advising

Lehigh does not offer a major in pre-med, but does support students who plan to pursue graduate-level work in health-related disciplines. Students who self-identify as pre-health or pre-med, should contact Autumn Moser in the [Center for Career and Professional Development](#) at careercenter@lehigh.edu to be enrolled in the Pre-Health Advising Course Site which provides up-to-date [information](#) about being pre-health at Lehigh. Students, at any point throughout their Lehigh career, are encouraged to meet with the pre-health adviser to explore their interests and aspirations and to formulate plans.

Dean of Students Office

Under the umbrella of our Dean of Students Office, students can seek additional academic support. The [Center for Academic Success](#) provides one-on-one, group, and peer-led tutoring; [the Writing and Math Center](#) provides focused feedback and training for courses that rely heavily on writing and math skills; and [Disability Support Services](#) works closely with students who self-identify in order to ensure equal access to University programs, activities, and services.

Diversity, Inclusion, & Equity

The Office of Diversity, Inclusion and Equity was created with the hiring of the inaugural Vice President for Equity & Community in February of 2017. Our office coordinates with all University assets, including students, staff, senior administrators, deans, department heads, trustees and local community leaders and groups. The division is comprised of our advocacy centers (the [Center for Gender Equity](#), the [Office of Multicultural Affairs](#), the [Pride Center for Sexual Orientation & Gender Diversity](#), and the [Chaplain's Office](#)), [Student Access and Success](#), and a Multicultural Community Liaison. We invite you to explore our website, and those of our centers, to learn about the rich and diverse community here at Lehigh and all it has to offer you.

Mentor Collective

The [Mentor Collective](#) at Lehigh University aims to provide peer-led support by upperclassmen to students navigating their first year on campus. You will be contacted via email with an opportunity to opt in to this program and be assigned a Peer Mentor, but please note that students are not automatically enrolled in the Mentor Collective. If you wish to take advantage of this program you will be paired with a Peer Mentor based on common interests, background, and academics pursuits. You should expect to meet at least once a month with your mentor to discuss a variety of topics regarding preparing for, and navigating, life at Lehigh.

Academics

Degree programs

Students entering into the College of Health will choose to pursue a BS (major population health) or a BA (major community and global health). Students do not need to declare your major prior to your first semester at Lehigh. In fact, we encourage you to explore courses in both disciplines before making this commitment.

[Bachelor of Science: Population Health](#)

Students pursuing a major in population health learn to investigate the determinants of health using data science and identify novel and effective avenues for disease prevention, health promotion, diagnosis, and intervention. With a foundation of mathematics, natural sciences, social sciences, and computer science, population health majors pursue a healthier world through data science and epidemiology.

[Bachelor of Arts: Community and Global Health](#)

Students pursuing a major in community and global health dive deep into the social, biological, environmental, political, and economic determinants of health to understand the roots of inequity in health outcomes both domestically and globally. To address these inequities, students apply both quantitative and mixed methods research, and learn to design, implement, and assess community-level health interventions to improve health outcomes.

Advanced Placement and International Baccalaureate

The university offers capable students who have superior preparation an opportunity for advanced placement and/or college credit. Many secondary schools, in association with the College Board, offer college-level work. Students participating in these courses should sit for the Advanced Placement Tests offered by the College Board. Entering first-year students that request the College Board to send their Advanced Placement Test scores to Lehigh are considered for advanced placement. You must have your scores submitted directly to Lehigh (code 002365).

Students who earn the International Baccalaureate may be granted credit in higher-level or advanced subjects with scores of 5 or better. All students will have their credentials evaluated on an individual basis for specific course equivalency. Lehigh's Registration & Academic Services Office must receive the Official IB transcript before credit will be assigned.

Additional information about Advanced Placement and International Baccalaureate can be found [here](#).

Transfer credit

If you have taken college courses at another accredited institution and plan to transfer these credits to Lehigh, you must submit a request to Registration and Academic Services. Refer to the transfer student web page at lehigh.edu/admissions/transfer-students for additional information.

Course Catalog

The course catalog serves as a guide to program requirements and university rules and policies as they relate to your undergraduate education. The course catalog is updated in August and is available online at catalog.lehigh.edu.

Course Registration

Overview

- It is your responsibility to register for your fall semester classes. Your summer interactions with College of Health faculty and staff will prepare you for this process.
- You will need to register for a minimum of 12 credits to be a full-time student, while the maximum number of credits you can take in your first semester is 17.
- A typical course load is about 15 credits.
- Generally speaking, you can only register for courses numbered below 100, unless given permission by a department or professor. However, some 100-level courses offered through the College of Health are available to first year students without special permission. These courses are noted as such in the following sections.
- Soon you will receive an invitation from the Office of Registration and Academic Services to complete a short onboarding survey. Please be sure to complete this survey as it provides information that will be used by your academic adviser.
- The Office of Registration and Academic Services will also email you in June to let you know the day and time in July registration will open for you. It is important that you complete your course registration process during the assigned dates since classes have limited seating. Use the instructions in this manual to ensure you are prepared for that process!
- Should you need any additional information on the registration process the Office of Registration and Academic Services has created a website for first year students that includes step-by-step videos and the most common Frequently Asked Questions about registration, located at: fysenroll.lehigh.edu.

First Semester Course Planning

The major in population health and the major in community and global health each have a distinct set of core courses that students are required to take. Students should choose core courses based on the intended major. If a student is undecided about their choice of major, then it is recommended that courses from both programs be taken to help guide this decision. Students who intend to enter into medical or veterinary school immediately following the completion of their undergraduate degree, may opt to delay taking COH core classes until their second year.

AP credit will be [posted](#) on July 13. Students should check this information and attempt to resolve any issues prior to registration.

Distribution Requirements

Distribution requirements are basic subject requirements that must be met regardless of a student's major and are specific to each college. All students in the College of Health must meet the requirements below prior to graduation.

- 2 courses of English (critical reading and composition, research and argument, or equivalent)
- 2 courses, or at least 6 credits designated as humanities (HU)—i.e., foreign languages, history, music, philosophy, or those found in [interdisciplinary programs](#).
- 2 courses designated of social science (SS)—i.e., anthropology, economics, history, international relations, journalism, political science, psychology, sociology. Some College of Health classes not used to fulfill the major requirements may also meet SS requirements. Students are encouraged to speak with their advisor if planning to use a COH course to fulfill this requirement.

English Requirement

All College of Health students must earn credit for two courses (6 credits total) in First Year Writing. Students with no transfer credit or insufficient achievement test scores, will start with ENGL 001 (3 credits), the first English course.

Students who demonstrate required proficiency on either of the English AP exams (English Language & Composition OR English Literature & Composition) with a score of 4 will receive 3 credits for ENGL 001, which fulfills the first of the two required First Year Writing courses. These students should enroll in the health-related ENGL 002, which will be offered in the spring 2023 semester. Students who receive a score of 5 on the AP exam will receive 6 credits for ENGL 001 *and* ENGL 002.

Math Recommendation

Calculus is not a required course, but it is recommended for students who plan to declare a BS in population health and for students on the pre-health track. The Mathematics Department uses a Calculus placement tool, ALEKS, from McGraw-Hill. Every student who intends to take a Calculus class at Lehigh in the fall of 2022 must use the ALEKS system for placement. ALEKS is an evaluation that provides a second recommendation for your Calculus course based on your results. ALEKS does not give credit like an AP exam. Instead, its purpose is to make sure students are ready for calculus. It will also indicate the topics and areas you can improve and provides modules to work through to prepare you for the fall semester. After completing the suggested modules, you have the opportunity to test again and improve your placement recommendation. More details about ALEKS will come in time for registration.

BS Population Health Major Requirements

*College distribution requirements	Credits
<i>Science Writing</i>	
ENGL 001 Critical reading and composition	3
ENGL 002 Research and argument	3
2 upper-level courses from an approved list	6-8
First-year seminar	3-4
<i>Determinants of Health (choose 2)</i>	
<i>Bioethics</i>	
<i>Diversity, Equity & Inclusion</i>	
<i>Sustainability</i>	
3-4	
Core courses	
POPH 001 Introduction to Population Health	4
POPH 002 Population Health Research Methods & Application	4
POPH 104 Careers in Population Health	3
Methods requirements	
EPI 304 Methods in Epidemiology I	4
EPI 305 Methods in Epidemiology II	4
Data science requirements	
BSTA 001 Population Health Data Science I	3
BSTA 002 Algorithms Lab 1	1
BSTA 101 Population Health Data Science II	3
BSTA 103 Algorithms Lab 2	1
POPH 301/305 Population Health Capstone Proposal/Honors	3 or 4
POPH 302/306 Population Health Capstone Execution/Honors	3 or 4
Electives	
(5 COH courses, with guidance from your advisor)	
1)	3-4
2)	3-4
3)	3-4
4)	3-4
5)	3-4

*Total of 10 classes, 32-37 credits

Please note: Many of these classes will be available through the individual majors in the college. It is expected that there will be some overlap between distribution requirements and major requirements, specifically in the upper-level scientific writing classes and determinants of health classes.

BA Community and Global Health Major Requirements

*College distribution requirements	Credits
<i>Science Writing</i>	
ENGL 001 Critical reading and composition	3
ENGL 002 Research and argument	3
2 upper-level courses from an approved list	6-8
First-year seminar	3-4
<i>Determinants of Health (2)</i>	
<i>Bioethics</i>	
<i>Diversity, Equity & Inclusion</i>	
<i>Sustainability</i>	
Core courses	
CGH 001 Community Health	3
CGH 004 Introduction to Global Health	3
CGH 101 Careers in Community & Global Health	3
Additional Determinants of Health course	4
<i>Methods requirement (1 qualitative, 1 quantitative, and 1 300-level or above)</i>	
BSTA 001 Population Health Data Science I	3
BSTA 005 Statistical Literacy in Health	3
BSTA 101 Population Health Data Science II	3
BSTA 305 Population Health Data Science III	4
BSTA 402 Health Data and Computational Science	4
BSTA 404 Data Architecture, Mining, and Linkage	4
EPI 304 Methods in Epidemiology I	4
EPI 304 Methods in Epidemiology II	4
<i>Cross-cultural or diversity requirement (minimum of 2)</i>	
CGH 021 Culture and Health	3
CGH 395 Cross-National comparisons of Health Systems & Policy	3
CGH 322 Contemporary Indigenous Health	3
ANTH 155 Medical Anthropology	4
POPH106 Global Environment & Human Welfare	3
Field Experience or Practicum	
CGH 301/303 Community and Global Health Field Experience I/Honors	3/4
CGH 302/304 Community and Global Health Field Experience II/Honors	3/4
<i>Electives (5 COH courses with guidance from your advisor)</i>	
1)	3-4
2)	3-4
3)	3-4
4)	3-4
5)	3-4
<i>Foreign Language (2 semesters in same language other than English)</i>	
	6-8

*Total of 10 classes, 32-37 credits

Please note: Many of these classes will be available through the individual majors in the college. It is expected that there will be some overlap between distribution requirements and major requirements, specifically in the upper-level scientific writing classes and determinants of health classes.

Electives

Your college experience should include time for you to explore. We encourage you to use your time at Lehigh to take courses in Lehigh's other undergraduate colleges, pursue a minor, and/or study abroad. When searching for possible elective courses, remember to look at those numbered below 100 unless otherwise noted.

Fall courses

The following courses are open to first year students. Some are core classes for the BA or BS programs and others are electives. Questions about a specific course can be sent to cohadvising@lehigh.edu.

BSTA 005 | Statistical Literacy in Health | 3 cr.

Section 010 | TR 3:00p – 4:15p | CRN: 45644

This course is designed to introduce students with a fear of all things mathematical to the importance of statistics in health research. Students will learn how to read and understand basic statistical concepts used in health research and in popular discussions about health in the media. Students will also learn how to present statistical health data in a way that people without a statistical background can understand it.

BS Population Health-elective

BA Community & Global Health-required

CGH 001 | Community Health | 3 cr.

Section 010 | MW 12:10 – 1:24p | CRN: 44733

The interdisciplinary field of community health focuses on improving the health of communities through health promotion and disease prevention, education, policy development, and community empowerment. This course provides students with an overview of theoretical, methodological, and practical aspects of community health with a focus on working in diverse communities. Students will gain an understanding of how community-level health issues relate to broader contextual issues within the community and externally.

Instructor: Professor TBD

BS Population Health-elective

BA Community & Global Health-required

CGH 004 | Introduction to Global Population Health | 3 cr.

Section 010 | MW 10:45a - 12:00p | CRN: 44739

In this course, students will receive an introduction to global population health. We begin with an analysis of the rise of the international community in addressing population health needs, and the international norms guiding healthcare delivery systems. We will also focus on healthcare delivery systems, innovations, and policy reforms in response to healthcare needs in several developing nations. Finally, students will understand the political, social, and more recent commercial determinants of population health in these countries.

Instructor: Professor Ed Gomez

BS Population Health-elective

BA Community & Global Health-required

CGH 007 | 7 Dimensions of Health and Wellness | 3 cr.

Section 010 | TR 9:20a-10:35a | CRN: 44818

Much has been discussed in the public sphere about happiness and how an individual can achieve peak happiness. This course delves more holistically into health and wellness, moving beyond individual happiness and towards a multi-level understanding of how interactions with others and the environment impact the self. Using a multi-disciplinary approach, students will learn the seven dimensions of health and wellness, including physical, mental, emotional, spiritual, cultural, environmental, and community, and how they interact to create healthy people and communities.

Instructor: Professor Christine Daley

BS Population Health-elective

BA Community & Global Health-elective

CGH 021 | Culture and Health | 3 cr.

Section 010 | R 1:35p - 2:50p | CRN: 44734

This course will introduce students to the complex and dynamic relationship between culture and health in Western and non-Western populations, communities, and societies. Cross-cultural institutions such as economics, politics, kinship, religion, and language, and their roles in sickness and illness will be discussed. The relationship between traditional and modern healing systems will also be analyzed.

Instructor: Ryan Goeckner

BS Population Health-elective

BA Community & Global Health-elective

POPH 001 | Introduction to Population Health | 4 cr.

Section 010 | TR 10:45a-12:00p | CRN: 43955

Despite significant advances in medicine and public health, inequities in health persist. Understanding health on a population level is an approach that seeks to improve the health of the whole population, unravel variations in health outcomes, and to identify effective strategies for reducing or eliminating inequities. The purpose of this course is to provide students with an understanding of: 1) how population health defined and measured; and 2) the determinants of population health (from cell to society).

Instructor: Professor TBA

BS Population Health-required

BA Community & Global Health-elective

Sample course schedules

First-year students will generally take about 15 credits in their first semester. Full-time status requires a minimum of 12 credits per semester, with a maximum of 17 credits in your first semester. College of Health courses are typically 3 credits unless they include a lab or recitation component. All COH students take the First-Year Seminar course.

Sample schedule: Major in population health

*ENGL 001	Critical Reading and Composition	3 credits
**MATH 051	Survey of Calculus I	4 credits
POPH 001	Intro to Population Health	4 credits
CGH 007	First-Year Seminar: 7 Dimensions of Health and Wellness	3 credits

Sample schedule: Major in community & global health

*ENGL 001	Critical Reading and Composition	3 credits
CGH 001 <i>or</i> CGH 004	Community Health Intro to Global Health	3 credits 3 credits
BSTA 005	Statistical Literacy in Health	3 credits
CGH 007	First-Year Seminar: 7 Dimensions of Health and Wellness	3 credits
Elective	Choose from the list of fall FYS eligible courses	3-4 credits

Sample schedule: Undecided

*ENGL 001	Critical Reading and Composition	3 credits
CGH 001 <i>or</i> CGH 004	Community Health <i>or</i> Intro to Global Health	3 credits
POPH 001	Intro to Population Health	4 credits
CGH 007	First-Year Seminar: 7 Dimensions of Health and Wellness	3 credits
Elective	Choose from the list of fall FYS eligible courses	3-4 credits

Sample schedule: Pre-health

*ENGL 001	Critical Reading and Composition	3 credits
**MATH 051	Survey of Calculus I (pre-health track)	4 credits
CHM 030	Intro to Chemical Principles	4 credits
CGH 007	First-Year Seminar: 7 Dimensions of Health and Wellness	3 credits

*Students who receive a score of 4 on either of the English AP exams can opt to take ENGL 002 instead or choose a required elective or HU/SS course in place of ENGL 001.

**Students who receive a 4 or 5 in AB AP exam or a 4 or 5 on the AB subscore of the BC exam receive credit for MATH021, which exempts a student from having to take MATH 051.

Build your Schedule

Use the below template to build what you would like for your first semester schedule.

Course number	Course name	Number of credits	Distribution or major requirement?

Preparing to Register

Registration begins July 18-120 and closes on July 29. Changes to your schedule can be made during FYS orientation.

There are instructional videos on how to look up and register for classes at fysenroll.lehigh.edu, but here are some helpful tips to get you started:

- Login to the Registration Portal via your Student Banner to review all course offerings for the Fall Semester.
- Choose link, “Browse Classes by Semester”
- Select from drop down, “2022 Fall Semester” and click “Continue”
- You can look up courses by Subject or by Attribute, such as Social Science Requirement or Humanities Requirement
 - The subject codes for the College of Health are
 - POPH (Population Health)
 - BSTA (Biostatistics)
 - CGH (Community & Global Health)
 - EPI (Epidemiology)
- Displayed results will tell you the CRN, course number, title, instructor, days, times, and credits of a course

CRN	Subject	Course Number	Section	Title	Hours	Meeting Times	Instructor	Status	Attributes
45044	BSTA	001	110	Population Health Data Science I	4	12:10 PM - 01:25 PM Type: Class Building: N 03:00 PM - 03:50 PM Type: Class Activity 1 B	McAndrew, Thomas (Primary)	10 of 19 seats remain. 19 of 10 waitlist seats r...	
45048	HIT	010	010	Seminar: Design Thinking for Innov...	1	01:35 PM - 02:50 PM Type: Class Building: C	Kauzmann, Christopher (Prim...	18 of 19 seats remain.	
45070	HIT	010	011	Seminar: Design Thinking for Innov...	1	01:35 PM - 02:50 PM Type: Class Building: C	Kauzmann, Christopher (Prim...	19 of 19 seats remain.	
44898	POPH	001	110	Introduction to Population Health	4	10:45 AM - 12:00 PM Type: Class Building: N 12:10 PM - 01:00 PM Type: Class Activity 1 B	Waheed, Fathima (Primary) Choi, Hyunok	9 of 15 seats remain. 5 of 5 waitlist seats r...	
45050	POPH	001	112	Introduction to Population Health	4	10:45 AM - 12:00 PM Type: Class Building: N 01:35 PM - 02:25 PM Type: Class Activity 1 B	Waheed, Fathima (Primary) Gomez, Eduardo	6 of 15 seats remain. 5 of 5 waitlist seats r...	
45052	POPH	001	114	Introduction to Population Health	4	10:45 AM - 12:00 PM Type: Class Building: N 10:45 AM - 11:35 AM Type: Class Activity 1 B	Waheed, Fathima (Primary) Choi, Hyunok Gomez, Eduardo	7 of 15 seats remain. 5 of 5 waitlist seats r...	
45056	POPH	001	118	Introduction to Population Health	4	10:45 AM - 12:00 PM Type: Class Building: N 01:35 PM - 02:25 PM Type: Class Activity 1 B	Waheed, Fathima (Primary) Daley, Christine Daley, Sean	12 of 15 seats remain. 5 of 5 waitlist seats r...	
45047	POPH	012	010	Seminar: Ethics in Population Health	1	01:35 PM - 02:50 PM Type: Class Building: N	Skinner, Halcyon (Primary)	92 of 100 seats remain.	
45081	POPH	096	010	Dimensions of Health & Wellness...	3	01:35 PM - 02:50 PM Type: Class Building: N	Daley, Christine (Primary)	73 of 75 seats remain. 5 of 5 waitlist seats r...	
44896	POPH	101	010	History of Population Health	3	09:20 AM - 10:35 AM Type: Class Building: N	Gomez, Eduardo (Primary)	9 of 19 seats remain. 5 of 5 waitlist seats r...	

- Clicking on the title of a course shows you important information such as:
 - Course description

- Restrictions, which may prevent registration
- Fees, which may be associated with the course
- Current enrollment

Class Details for Population Health Data Science | Biostatistics 001 110

Term: 202040 | CRN: 45044

Class Details

Lehigh Bookstore Link

Course Description

Attributes

Restrictions

Instructor/Meeting Times

Enrollment/Waitlist

Prerequisites

Corequisites

Cross Listed Courses

Fees

Not all restrictions are applicable.

Must be enrolled in one of the following Colleges:
Health (HE)

Must be enrolled in one of the following Fields of Study (Major, Minor or Concentration):
Global Population Health (GLPH)
Population Health (POHE)

Close

S M T W T F S | 10:45 AM - 12:00 PM Type: Class Building: N Wakeej, Fathima (Primary) 7 of 15 seats remain.
S M T W T F S | 10:45 AM - 11:35 AM Type: Class Activity 1 Bt Choi, Hyunok 5 of 5 waitlist seats r...
Gomez, Eduardo

Steps to Building your Schedule

