

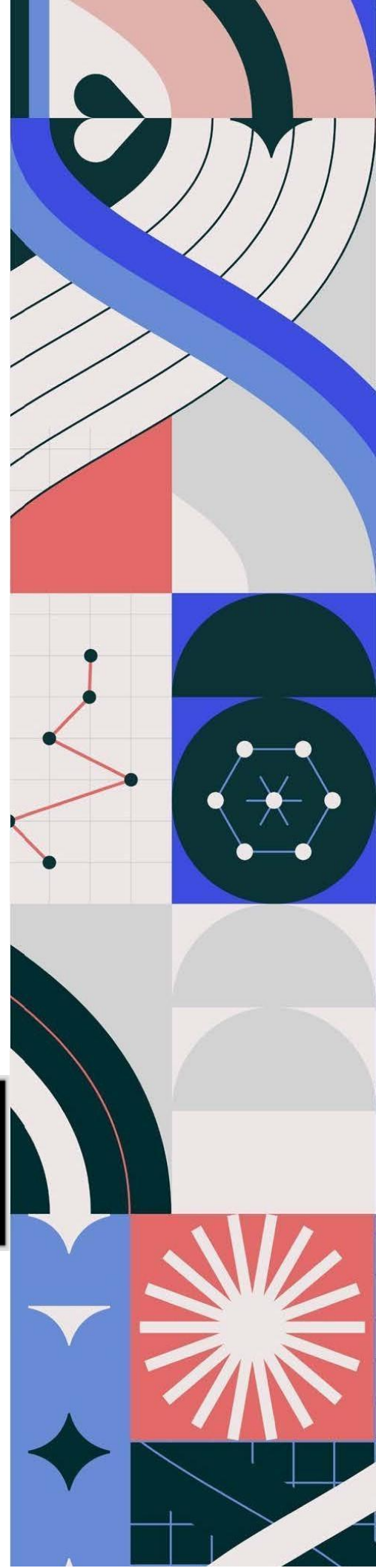


LEHIGH
UNIVERSITY

College
of Health

Class of
2027
Fall 2023

*Course Registration &
Information Packet*



Welcome from the Dean



Elizabeth A. Dolan, PhD
Interim Dean

Dear College of Health Class of 2027,

I am delighted to welcome you to the College of Health at Lehigh University. Congratulations on your acceptance into the College!

Do you want to play a role in preventing the next pandemic, improving health outcomes domestically and globally, or coming up with entrepreneurial ideas for preventing and treating chronic disease? All of these are possibilities for your future now that you've chosen the College of Health. For those of you interested in careers in medicine, dentistry, or veterinary medicine, completing a degree in the College of Health will give you a unique perspective and a strong skill set that will set you apart from other applicants to these professional programs.

You were accepted into the College of Health because we are inspired by your desire to make a difference in the world's health, and impressed by your qualifications. We are confident that you will excel in either of our two majors--the B.S. in Population Health, in which you will learn about the multiple determinants of health, data analytics, and epidemiology, or our B.A. in Community and Global Health, in which you will learn about the multiple determinants of health, and how to design, implement, and evaluate health interventions for communities in the U.S. and abroad. We are also excited to offer seven [minor programs](#), including our newest Biostatistics minor, which you can read more about on our website.

Please join us in June for "COH 101," virtual sessions designed to introduce you to what your life as a COH student will be like. In these sessions, you'll hear about the different classes in COH, meet some of our faculty, explore the careers you can consider with either of our degrees, and learn about how to register for classes.

We hope to see you on Zoom this summer, and REALLY look forward to meeting you in person in the Fall.

Welcome!

Warmly,

A handwritten signature in black ink that reads "Elizabeth A. Dolan".

The College of Health Team

The faculty, staff, and leadership of the College of Health are a support system for students throughout their time at Lehigh. For a list of personnel and their contact information, click on the links below.

- [College Leadership](#)
- [Staff](#)
- [Faculty](#)

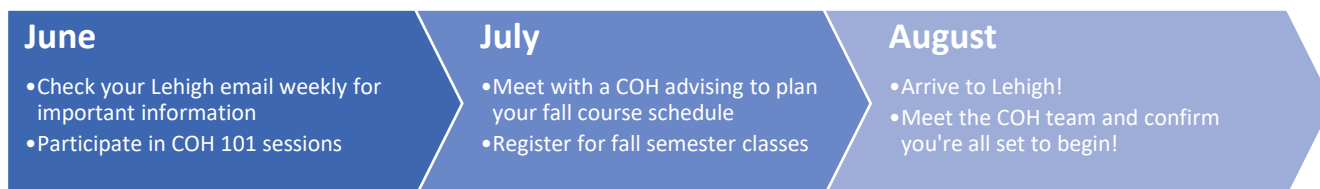
Advising and Support

Advising Structure

All first-year students are advised by professional staff advisors who guide students on building their first-semester schedule and answering curriculum-related questions. These advisors work closely with faculty and the associate dean of academic programs. Students are encouraged to declare their major by sophomore year, and once they do, they are assigned a faculty mentor whose purpose is to provide direction and input on experiential learning opportunities in relation to the area of concentration, career guidance, and post-graduate education advice. For support, you can reach out by email at cohadvising@lehigh.edu.

Summer Timeline

Throughout the summer, students receive a series of correspondences from various campus departments aimed to help them prepare for their first semester at Lehigh. **It is important to check your [Lehigh email address weekly for these communications](#). Soon, you will receive an email from “COH Advising” (cohadvising@lehigh.edu) letting you know all about *COH 101*, a series of virtual information sessions held in June. One of these sessions is dedicated to course planning and registration. In July, students meet with a COH advisor to help plan fall semester courses.**



Health Professions Advising

Lehigh does not offer a major in pre-med but does support students who plan to pursue graduate-level work in health-related disciplines. Students who self-identify as pre-health or pre-med should contact Autumn Moser in the [Center for Career and Professional Development](#) at careercenter@lehigh.edu for enrollment in the Pre-Health Advising Course Site, an online tool that provides up-to-date [information](#) for pre-health students. Students, at any point throughout their Lehigh career, are encouraged to meet with the pre-health adviser to explore their interests and aspirations and to formulate plans.

Dean of Students Office

Under the umbrella of our Dean of Students Office, students can seek additional academic support. The [Center for Academic Success](#) provides one-on-one, group, and peer-led tutoring; [the Writing and Math Center](#) provides focused feedback and training for courses that rely heavily on writing and math skills; and [Disability Support Services](#) works closely with students who self-identify in order to ensure equal access to University programs, activities, and services.

Diversity, Inclusion, & Equity

The Office of Diversity, Inclusion, and Equity was created with the hiring of the inaugural Vice President for Equity & Community in February of 2017. Our office coordinates with all University assets, including students, staff, senior administrators, deans, department heads, trustees, and local community leaders and groups. The division is comprised of our advocacy centers (the [Center for Gender Equity](#), the [Office of Multicultural Affairs](#), the [Pride Center for Sexual Orientation & Gender Diversity](#), and the [Chaplain's Office](#)), [Student Access and Success](#), and a Multicultural Community Liaison. We invite you to explore our website and those of our centers to learn about the rich and diverse community here at Lehigh and all it has to offer you.

Mentor Collective

The [Mentor Collective](#) at Lehigh University aims to provide peer-led support by upperclassmen to students navigating their first year on campus. You will be contacted via email with an opportunity to opt into this program and be assigned a Peer Mentor. However, please note that students are not automatically enrolled in the Mentor Collective. If you wish to take advantage of this program, you will be paired with a Peer Mentor based on common interests, background, and academic pursuits. You should expect to meet at least once a month with your mentor to discuss a variety of topics regarding preparing for and navigating life at Lehigh.

Academics

Degree programs

Students entering the College of Health choose to pursue a BS (major in population health) or a BA (major in community and global health). Students do not need to declare their major prior to their first semester at Lehigh. In fact, we encourage you to explore courses in both disciplines before making this commitment. Students are strongly encouraged to declare the major of choice by sophomore year.

[Bachelor of Science: Population Health](#)

Students pursuing a major in population health learn to investigate the determinants of health using data science and identify novel and effective avenues for disease prevention, health promotion, diagnosis, and intervention. With a foundation in mathematics, natural sciences, social sciences, and computer science, population health majors pursue a healthier world through data science and epidemiology.

[Bachelor of Arts: Community and Global Health](#)

Students pursuing a major in community and global health dive deep into the social, biological, environmental, political, and economic determinants of health to understand the roots of inequity in health outcomes both domestically and globally. To address these inequities, students apply both quantitative and mixed methods research, and learn to design, implement, and assess community-level health interventions to improve health outcomes.

[Advanced Placement and International Baccalaureate](#)

The university offers capable students who have superior preparation an opportunity for advanced placement and/or college credit. Many secondary schools, in association with the College Board, offer

college-level work. Students participating in these courses should sit for the Advanced Placement Tests offered by the College Board. Entering first-year students that request the College Board to send their Advanced Placement Test scores to Lehigh are considered for advanced placement. You must have your scores submitted directly to Lehigh (code 002365).

Students who earn the International Baccalaureate may be granted credit in higher-level or advanced subjects with scores of 5 or better. All students will have their credentials evaluated on an individual basis for specific course equivalency. Lehigh's Registration & Academic Services Office must receive the Official IB transcript before credit will be assigned.

Additional information about Advanced Placement and International Baccalaureate can be found [here](#).

Transfer credit

If you have taken college courses at another accredited institution and plan to transfer these credits to Lehigh, you must submit a request to Registration and Academic Services. Refer to the transfer student web page at lehigh.edu/admissions/transfer-students for additional information.

Course Catalog

The course catalog serves as a guide to program requirements and university rules and policies as they relate to your undergraduate education. The course catalog is updated in August and is available online at catalog.lehigh.edu.

Course Registration

Overview

- **It is your responsibility to register for your fall semester classes.** Your summer interactions with College of Health faculty and staff prepare you for this process.
- You **must** register for a minimum of 12 credits to be a full-time student, while the maximum number of credits you may take in your first semester is 17.
- A typical course load is about 15 credits.
- Generally speaking, **you may only register for courses numbered below 100** unless given permission by a department or professor. However, some 100-level courses offered through the College of Health may be available to first-year students without special permission. These courses are noted as such in the following sections.
- Soon, you will receive an invitation from the Office of Registration and Academic Services to complete a short onboarding survey. **Please be sure to complete this survey**, as it provides information that will be used by your academic adviser.
- The Office of Registration and Academic Services will email you in June to let you know the day and time in July registration opens for you. It is important that you complete your course registration process during the assigned dates since classes have limited seating. Use the instructions in this manual to ensure you are prepared for that process!
- Should you need any additional information on the registration process, the Office of Registration and Academic Services has created a website for first-year students that includes step-by-step videos and the most common Frequently Asked Questions about registration, located at: fysenroll.lehigh.edu.

First Semester Course Planning

The major in population health and the major in community and global health each have a distinct set of core courses that students are required to take. Students should choose core courses based on the intended major. If a student is undecided about their choice of major, then it is recommended that

courses from both programs be taken to help guide this decision. Students who intend to enter into medical or veterinary school immediately following the completion of their undergraduate degree, may opt to delay taking COH core classes until their second year.

AP credit will be posted by Registration and Academic Services. Students should check this information and attempt to resolve any issues prior to registration.

Distribution Requirements

Distribution requirements are basic subject requirements that must be met regardless of a student's major and are specific to each college. All students in the College of Health must meet the requirements below prior to graduation. Distribution credits may be applied to major or minor program requirements if applicable.

College distribution requirements	Credits
Science Writing	
ENGL 001/003 Critical reading and composition	3-4
ENGL 002/005 Research and argument	3-4
2 upper-level writing intensive courses from an approved list, or in consultation with your advisor	6-8
First-year Seminar	3
Determinants of health	
2 classes from determinants list	8
Bioethics	
1 class from an approved list	3-4
Diversity, Equity & Inclusion	3-4
1 class from an approved list	
Sustainability	3-4
1 class from an approved list	

English Requirement

All College of Health students must earn credit for two courses (6 credits total) in First Year Writing. Students with no transfer credit or insufficient achievement test scores will start with ENGL 001 or ENGL 003 (3 credits), the first English course.

Students who demonstrate required proficiency on either of the English AP exams (English Language & Composition OR English Literature & Composition) with a score of 4 will receive 3 credits for ENGL 001, which fulfills the first of the two required First-Year Writing courses. These students may enroll in either another major requirement open or elective open to First-Year students.

ENGL 002 or ENGL 005 will be offered in the spring 2024 semester, with some sections focused on health, which students can opt for. Students who receive a score of 5 on the AP exam will receive 6 credits for ENGL 001 or ENGL003 *and* ENGL 002 or ENGL 005.

Math Recommendation

Calculus is not a required course, but it is recommended for students who plan to declare a BS in population health and for students on the pre-health track. The Mathematics Department uses a Calculus placement tool, ALEKS, from McGraw-Hill. Every student who intends to take a Calculus class at Lehigh in the fall of 2022 must use the ALEKS system for placement. ALEKS is an evaluation that provides a second recommendation for your Calculus course based on your results. ALEKS does not give

credit like an AP exam. Instead, its purpose is to make sure students are ready for calculus. It will also indicate the topics and areas you can improve and provides modules to work through to prepare you for the fall semester. After completing the suggested modules, you have the opportunity to test again and improve your placement recommendation. More details about ALEKS will come in time for registration.

Major Requirements

Population Health Major Requirements (62-71 credits)

BS MAJOR REQUIREMENTS	
Core courses	
POPH 001 Introduction to Population Health	4
POPH 002 Population Health Research Methods & Application	4
POPH 104 Careers in Population Health	3
EPI 304 Methods in Epidemiology I	4
EPI 305 Methods in Epidemiology II	4
Data science requirements	
BSTA 001 Population Health Data Science I & BSTA 002 Algorithms Lab 1	3
	1
BSTA 101 Population Health Data Science II & BSTA 103 Algorithms Lab 2	3
	1
Two upper-level methods courses chosen with advisor	6-8
Determinants of Health (2 courses)	
CGH 103 Biological & Environmental Determinants of Health CGH 104 Sociocultural & Political Determinants of Health CGH 105 Commercial Determinants of Health	8
Capstone requirement	
POPH 301/305 Population Health Capstone Proposal/Honors	3 or 4
POPH 302/306 Population Health Capstone Execution/Honors	3 or 4
Electives (5 COH courses, with guidance from your advisor)	
Elective 1	3-4
Elective 2	3-4
Elective 3	3-4
Elective 4	3-4
Elective 5	3-4

BA Community and Global Health Major Requirements (57–70 credits)

Core courses	
CGH 001 Community Health	3
CGH 004 Introduction to Global Health	3
CGH 101 Careers in Community & Global Health	3
CGH 103 Biological & Environmental Determinants of Health	4
CGH 104 Sociocultural & Political Determinants of Health	3
CGH 105 Commercial Determinants of	3-4
Field Experience or Practicum	
CGH 301/303 Community and Global Health Field Experience I/Honors	3 or 4
CGH 302/304 Community and Global Health Field Experience II/Honors	3 or 4
Methods requirement	
One Qualitative course, one quantitative course and one course at the 300-level	9-12
Cross-cultural or diversity	
A minimum of 3 classes and 9 credits from an approved list or chosen in consultation with your advisor.	9-12
Electives	
5 courses and a minimum of 15 credits in consultation with an advisor; must have an applied health focus	15-20
Collateral Requirement	
Two semesters of language study other than in English but in the same language	

Electives

Your college experience should include time for you to explore. We encourage you to use your time at Lehigh to take courses in Lehigh's other undergraduate colleges, pursue a minor, and/or study abroad. When searching for possible elective courses, remember to look at those numbered below 100 unless otherwise noted.

Fall courses

The following courses are open to first-year students (they can also be found online [here](#)). Some are core or distribution classes for the BA or BS programs, and others are electives. Questions about a specific course can be sent to cohadvising@lehigh.edu.

BSTA 001 | Population Health Data Science | 3 cr. | Must be taken with lab BSTA 002

Section 010 | TR 7:15-9:55p | CRN: 45120

Students will learn the fundamentals of probability theory, univariate statistics, statistical computing/programming/visualization, and machine learning. A mix of traditional and experiential learning will focus on how to build an analysis pipeline to answer pressing questions in population health. In-class examples and projects will use real data sets. Students will propose a small data-driven project focused in population health, and use their newly-acquired data science skills to collect, analyze, and present their work.

BS Population Health-required

BA Community & Global Health-elective

BSTA 002 | Algorithms Lab. | 1 cred. | Choose one: must be taken with BSTA 001

Section 061 | F 10:45-12:00 | CRN: 45122

Section 062 | F 12:10-1:25 | CRN: 45123

BSTA 005 | Statistical Literacy | 3 cr

Section 010 | MW 9:20-10:35a | CRN: 44318

This course is designed to introduce students who fear all things mathematical to the importance of statistics in health research. Students will learn how to read and understand basic statistical concepts used in health research and popular discussions about health in the media. Students will also learn how to present statistical health data in a way that people without a statistical background can understand it.

BS Population Health-elective

BA Community & Global Health-required

CGH 001 | Community Health | 3 cr.

Section 010 | MW 1:35-2:50p | CRN: 43689

The interdisciplinary field of community health focuses on improving the health of communities through health promotion and disease prevention, education, policy development, and community empowerment. This course provides students with an overview of theoretical, methodological, and practical aspects of community health, focusing on working in diverse communities. Students will gain an understanding of how community-level health issues relate to broader contextual issues within the community and externally.

Instructor: Professor TBD

BS Population Health-elective

BA Community & Global Health-required

CGH 004 | Introduction to Global Population Health | 3 cr.

Section 010 | MW 3:00 – 4:15 | CRN: 43692

In this course, students will receive an introduction to global population health. We begin by analyzing the rise of the international community in addressing population health needs and the international norms guiding healthcare delivery systems. We will also focus on healthcare delivery systems, innovations, and policy reforms in response to healthcare needs in several developing nations. Finally, students will understand the political, social, and more recent commercial determinants of population health in these countries.

Instructor: TBD

BS Population Health-elective

BA Community & Global Health-required

CGH 007|COH First-Year Seminar: Seven Dimensions of Health & Wellness|3 cr. |Must be taken with a recitation

Section 100|T 9:20-10:35a|CRN: 43736

Instructor: Dr. Christine Daley

CGH 007 Recitation sections (choose one):

Section 111|R 9:20-10:35|CRN: 45181

Section 112| R 1045-1200 |CRN: 45182

Section 113| F 0920-1035 |CRN 45189

Section 116| W 1915-2030| CRN 45193

BS Population Health-required

BA Community & Global Health-required

CGH 021 |Culture and Health|3 cr.

Section 010|TR 12:10-1:25p|CRN: 43690

This course will introduce students to the complex and dynamic relationship between culture and health in Western and non-Western populations, communities, and societies. Cross-cultural institutions such as economics, politics, kinship, religion, and language, and their roles in sickness and illness will be discussed. The relationship between traditional and modern healing systems will also be analyzed.

Instructor: Ryan Goeckner

BS Population Health-elective

BA Community & Global Health-elective

CGH 096 |Are We Living in the Post-Antibiotic Apocalypse? |3cr.

Section 012|MW|12:10-1:25|CRN: 45335

Eighty years of excessive use of antimicrobials has led to a rise in antimicrobial resistance (AMR) with projections that by 2050 10 million people per year could die due to drug-resistant infections. This seminar will provide an immersive introduction to AMR from diverse perspectives: biology, epidemiology, engineering, history, ethics, anthropology, and literature. We will learn everything from the basic microbiology of bacteria to the mechanisms engineered to treat their infections. In the lab we'll practice environmental sampling and grow, identify, and test the resistance of these microbes. Class readings will include scientific studies along with comics, poetry, fiction, histories, and video games to understand how the language and representations of microbes, antibiotics, and AMR have changed over time. Importantly, we will consider the role of popular culture in expressing and shaping public awareness of AMR. In 2013, the US CDC declared that we are now in "post-antibiotic era". But, what does it mean to live in a post-antibiotic world? How did we get here, and what can we do about it?

Instructors: Dr. Lorenzo Servitje and Dr. Gabrielle String

BS Population Health: elective

BA: Community & Global Health: elective

POPH 001 | Introduction to Population Health | 4 cr.

Section 010 | TR 3:00-4:15p | CRN: 43242

Despite significant advances in medicine and public health, inequities in health persist. Understanding health on a population level is an approach that seeks to improve the health of the whole population, unravel variations in health outcomes, and identify effective strategies for reducing or eliminating inequities. The purpose of this course is to provide students with an understanding of 1) how population health is defined and measured and 2) the determinants of population health (from cell to society).

Instructor: Professor TBA

BS Population Health-required

BA Community & Global Health-elective

Sample course schedules

First-year students will generally take about 15 credits in their first semester. Full-time status requires a minimum of 12 credits per semester, with a maximum of 17 credits in your first semester. **All first-year students are required to take the College of Health First-Year Seminar (CGH 007) and to take ENGL 001 or 003 unless they have received AP or transfer credit for it.**

Sample schedule: Major in population health

*ENGL 001/003	Critical Reading and Composition	3 credits
**MATH 051	Survey of Calculus I	4 credits
POPH 001	Intro to Population Health	4 credits
CGH 007	First Year Seminar: 7 Dimensions of Health & Wellness (must also take a recitation)	3 credits

Sample schedule: Major in community & global health

*ENGL 001/003	Critical Reading and Composition	3 credits
CGH 001	Community Health	3 credits
CGH 004	Intro to Global Population Health	3 credits
CGH 007	First Year Seminar: 7 Dimensions of Health & Wellness (must also take a recitation)	3credits

Sample schedule: Undecided

*ENGL 001/003	Critical Reading and Composition	3 credits
CGH 001 or CGH 004	Community Health or Global Health	3 credits
POPH 001	Intro to Population Health	3 credits
CGH 007	First Year Seminar: 7 Dimensions of Health & Wellness (must also take a recitation)	3 credits

Sample schedule: Pre-health

*ENGL 001/003	Critical Reading and Composition	3 credits
**MATH 051	Survey of Calculus I (pre-health track)	4 credits
CHM 030	Intro to Chemical Principles	4 credits
CGH 007	First Year Seminar: 7 Dimensions of Health & Wellness (must also take a recitation)	3 credits

*Students who receive a score of 4 on either of the English AP exams can opt to an elective course in place of ENGL 001 or ENGL 003.

**Students who receive a 4 or 5 in the AB AP exam or a 4 or 5 on the AB subscore of the BC exam receive credit for MATH021, which exempts a student from having to take MATH 051.

Build your Schedule

Use the below template to build what you would like for your first semester schedule.

Course number	Course name	Number of credits	Distribution, elective or major requirement?

Preparing to Register

Registration for first-year students is in July. Be sure to check your email for updates on the exact date. Changes to your schedule can be made during FYS orientation.

There are instructional videos on how to look up and register for classes at fysenroll.lehigh.edu, but here are some helpful tips to get you started:

- Login to the Registration Portal via your Student Banner to review all course offerings for the Fall Semester.
- Choose the link, “Browse Classes by Semester.”

CRN	Subject	Course Number	Section	Title	Hours	Meeting Times	Instructor	Status	Attribute
45044	BSTA	001	110	Population Health Data Science I	4	12:10 PM - 01:25 PM Type: Class Building: N 03:00 PM - 03:50 PM Type: Class Activity 1 B	McAndrew, Thomas (Primary)	10 of 19 seats remain. 10 of 10 waitlist seats r...	
45048	HIT	010	010	Seminar: Design Thinking for Innov...	1	01:35 PM - 02:50 PM Type: Class Building: C	Kauzmann, Christopher (Prim...	18 of 19 seats remain.	
45070	HIT	010	011	Seminar: Design Thinking for Innov...	1	01:35 PM - 02:50 PM Type: Class Building: C	Kauzmann, Christopher (Prim...	19 of 19 seats remain.	
44898	POPH	001	110	Introduction to Population Health	4	10:45 AM - 12:00 PM Type: Class Building: N 12:10 PM - 01:00 PM Type: Class Activity 1 B	Wakeel, Fathima (Primary) Choi, Hyunok	9 of 15 seats remain. 5 of 5 waitlist seats r...	
45050	POPH	001	112	Introduction to Population Health	4	10:45 AM - 12:00 PM Type: Class Building: N 01:35 PM - 02:25 PM Type: Class Activity 1 B	Wakeel, Fathima (Primary) Gomez, Eduardo	6 of 15 seats remain. 5 of 5 waitlist seats r...	
45052	POPH	001	114	Introduction to Population Health	4	10:45 AM - 12:00 PM Type: Class Building: N 10:45 AM - 11:35 AM Type: Class Activity 1 B	Wakeel, Fathima (Primary) Choi, Hyunok Gomez, Eduardo	7 of 15 seats remain. 5 of 5 waitlist seats r...	
45056	POPH	001	118	Introduction to Population Health	4	10:45 AM - 12:00 PM Type: Class Building: N 01:35 PM - 02:25 PM Type: Class Activity 1 B	Wakeel, Fathima (Primary) Daley, Christine Daley, Sean	12 of 15 seats remain. 5 of 5 waitlist seats r...	
45047	POPH	012	010	Seminar: Ethics in Population Health	1	01:35 PM - 02:50 PM Type: Class Building: N	Skinner, Halcyon (Primary)	92 of 100 seats remain.	
45081	POPH	096	010	Dimensions of Health & Wellness:...	3	01:35 PM - 02:50 PM Type: Class Building: N	Daley, Christine (Primary)	73 of 75 seats remain. 5 of 5 waitlist seats r...	
44896	POPH	101	010	History of Population Health	3	09:20 AM - 10:35 AM Type: Class Building: N	Gomez, Eduardo (Primary)	9 of 19 seats remain. 5 of 5 waitlist seats r...	

- Select from the drop-down “2023 Fall Semester” and click “Continue.”
- You can look up courses by Subject or by Attribute, such as Social Science Requirement or Humanities Requirement
 - The subject codes for the College of Health are
 - POPH (Population Health)
 - BSTA (Biostatistics)
 - CGH (Community & Global Health)
- EPI (Epidemiology) Displayed results will tell you the CRN, course number, title, instructor, days, times, and credits of a course
 - Clicking on the title of a course shows you important information such as: Course description
 - Restrictions, which may prevent registration
 - Fees, which may be associated with the course
 - Current enrollment

Class Details for Population Health Data Science I Biostatistics 001 110

Term: 202040 | CRN: 45044

Class Details

Lehigh Bookstore Link

Course Description

Attributes

Restrictions

Instructor/Meeting Times

Enrollment/Waitlist

Prerequisites

Corequisites

Cross Listed Courses

Fees

Not all restrictions are applicable.

Must be enrolled in one of the following Colleges: Health (HE)

Must be enrolled in one of the following Fields of Study (Major, Minor or Concentration): Global Population Health (GLPH) Population Health (POHE)

Close

Steps to Building your Schedule

