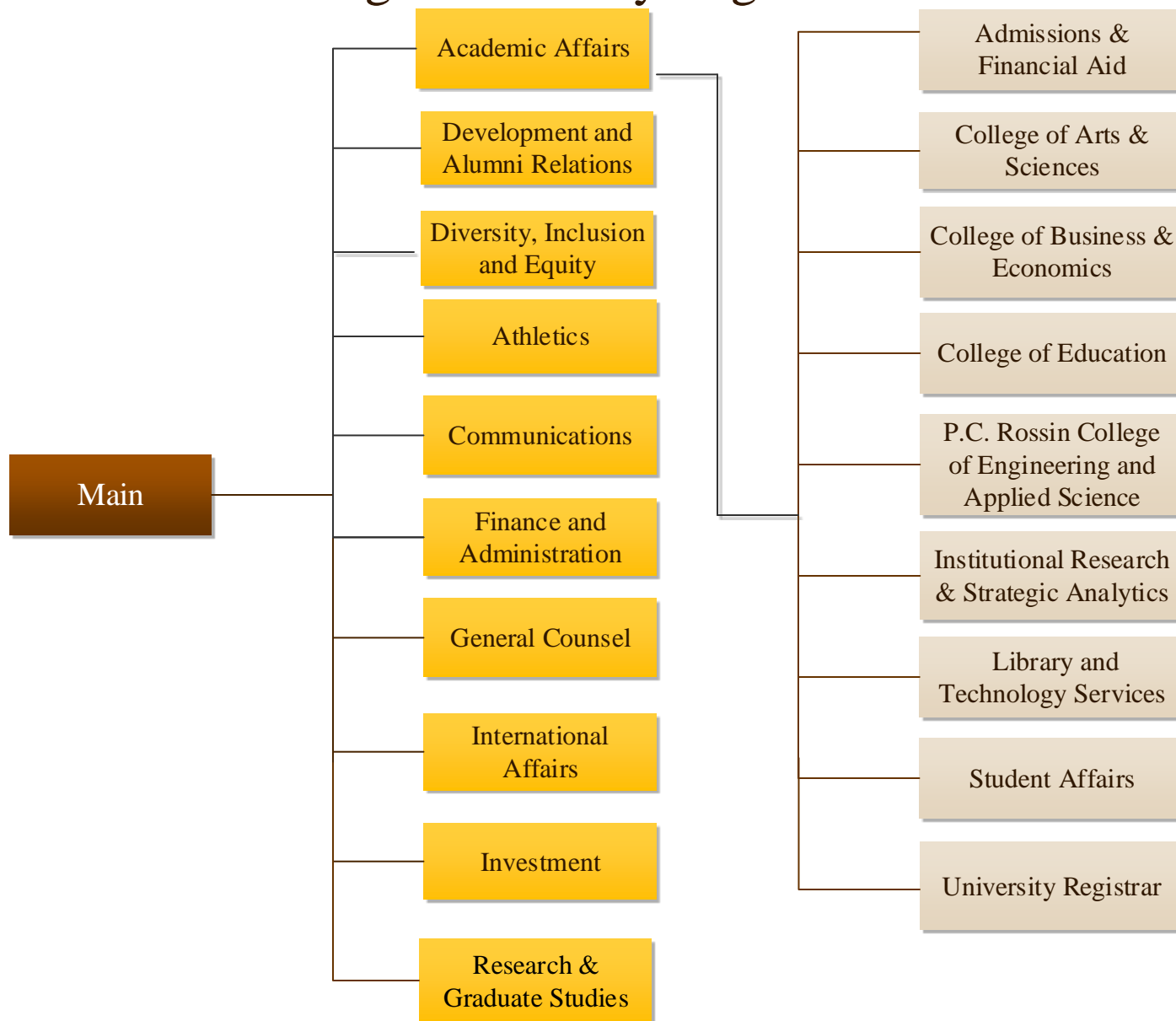


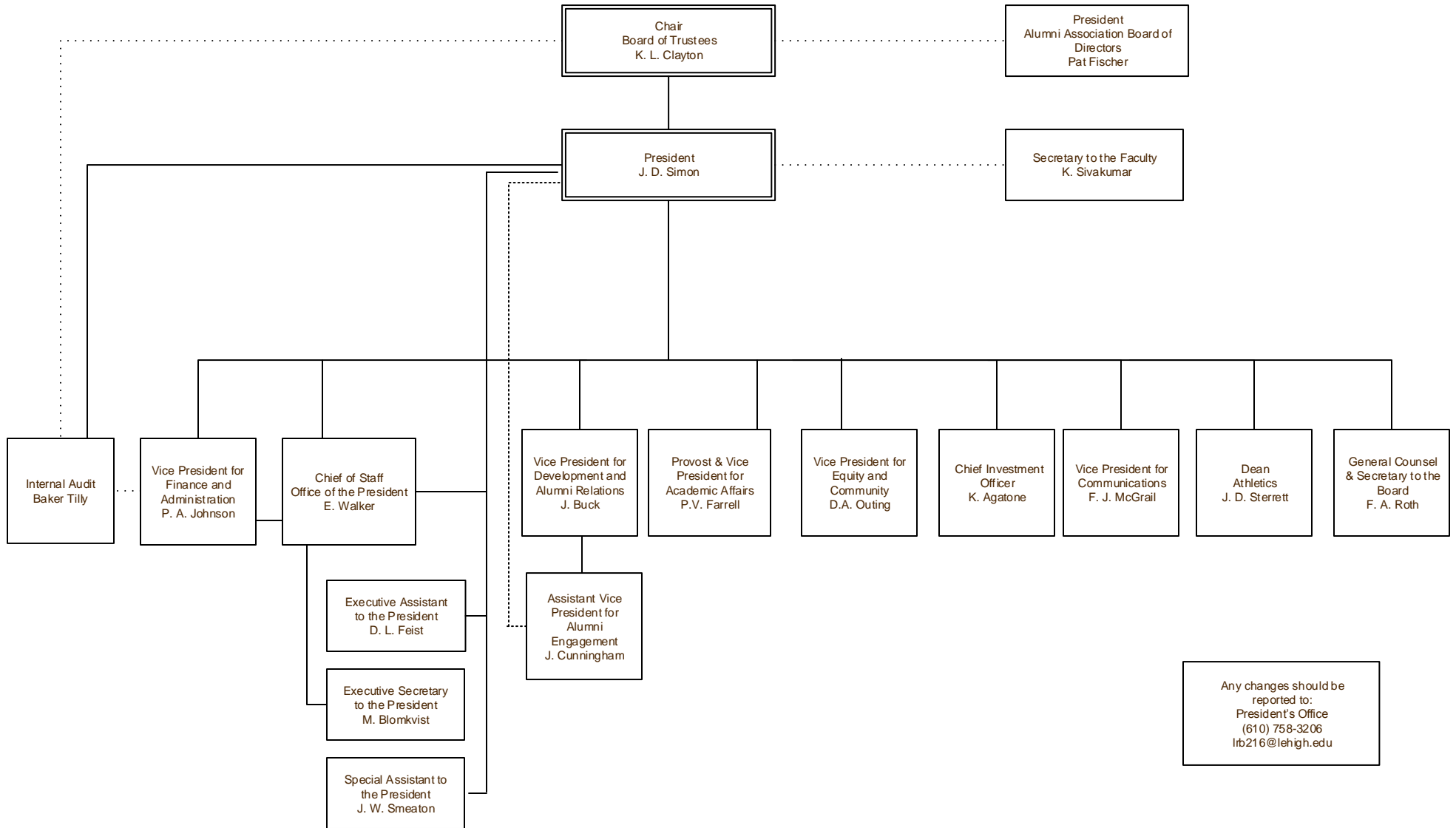
# Lehigh University Organization Chart





# Organization Chart

Last Update:  
December 4, 2017



Any changes should be reported to:  
President's Office  
(610) 758-3206  
lrb216@lehigh.edu

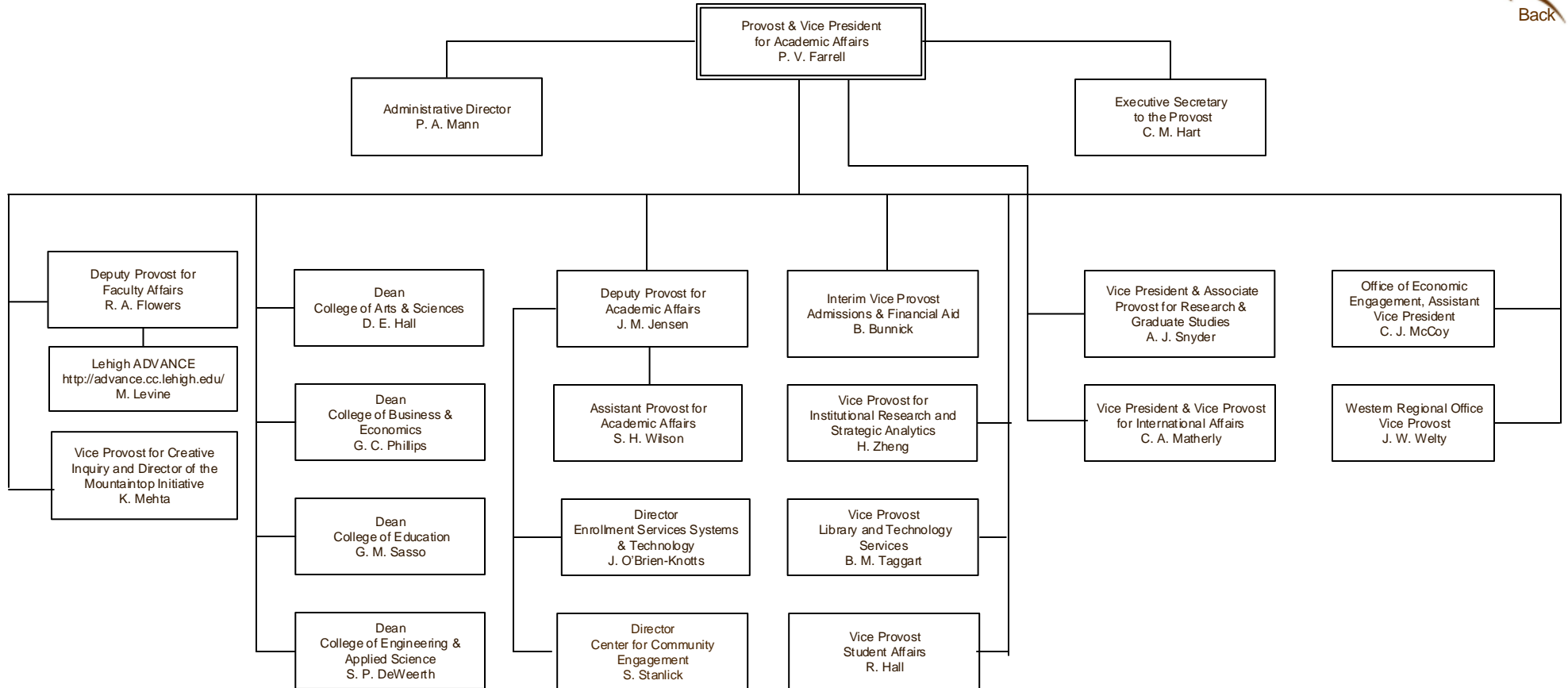
----- Indicates dual reporting line  
———— Indicates direct report



# Organization Chart

Last Update:  
October 13, 2017

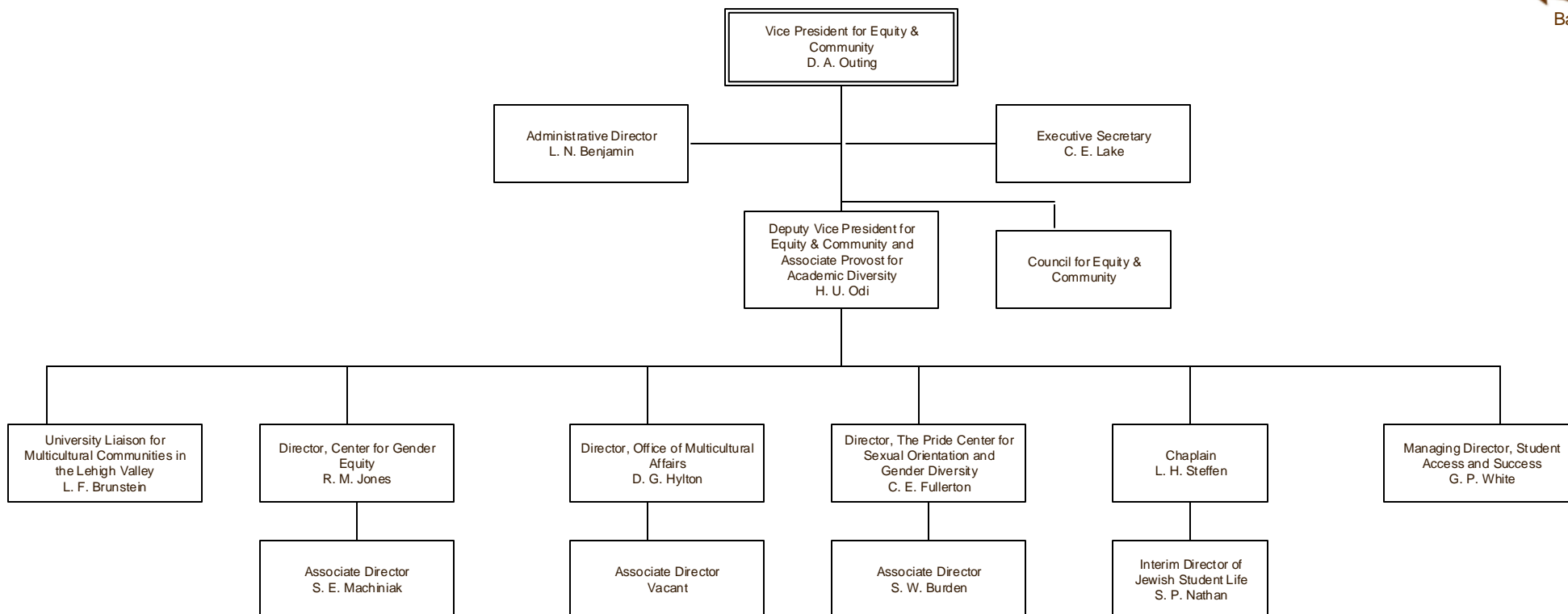
## Provost & VP of Academic Affairs



----- Indicates dual reporting line

———— Indicates direct report

## Office of Diversity, Inclusion and Equity



..... Indicates dual reporting line

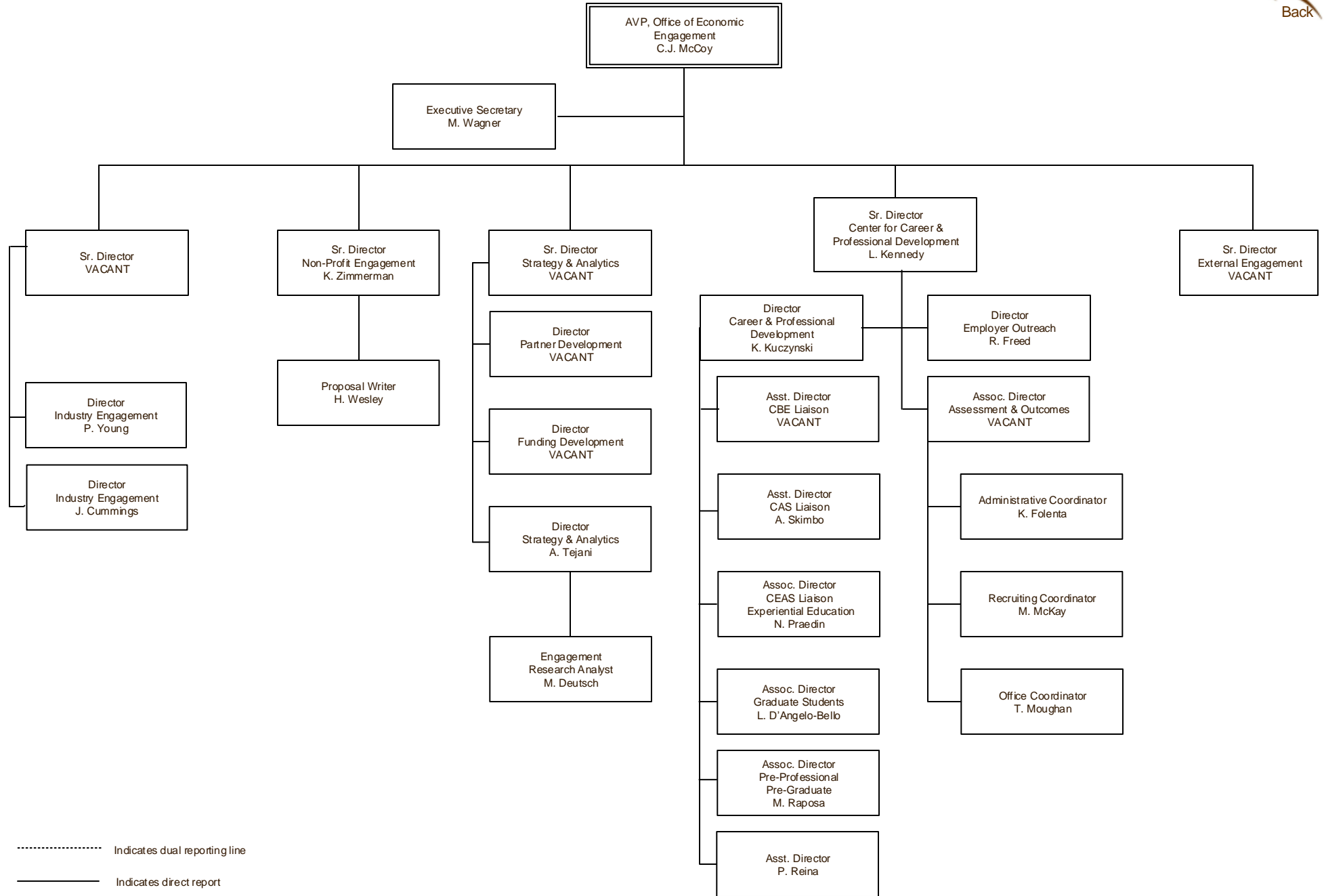
———— Indicates direct report



# Organization Chart

## Office of Economic Engagement

Last Update:  
January 23, 2018



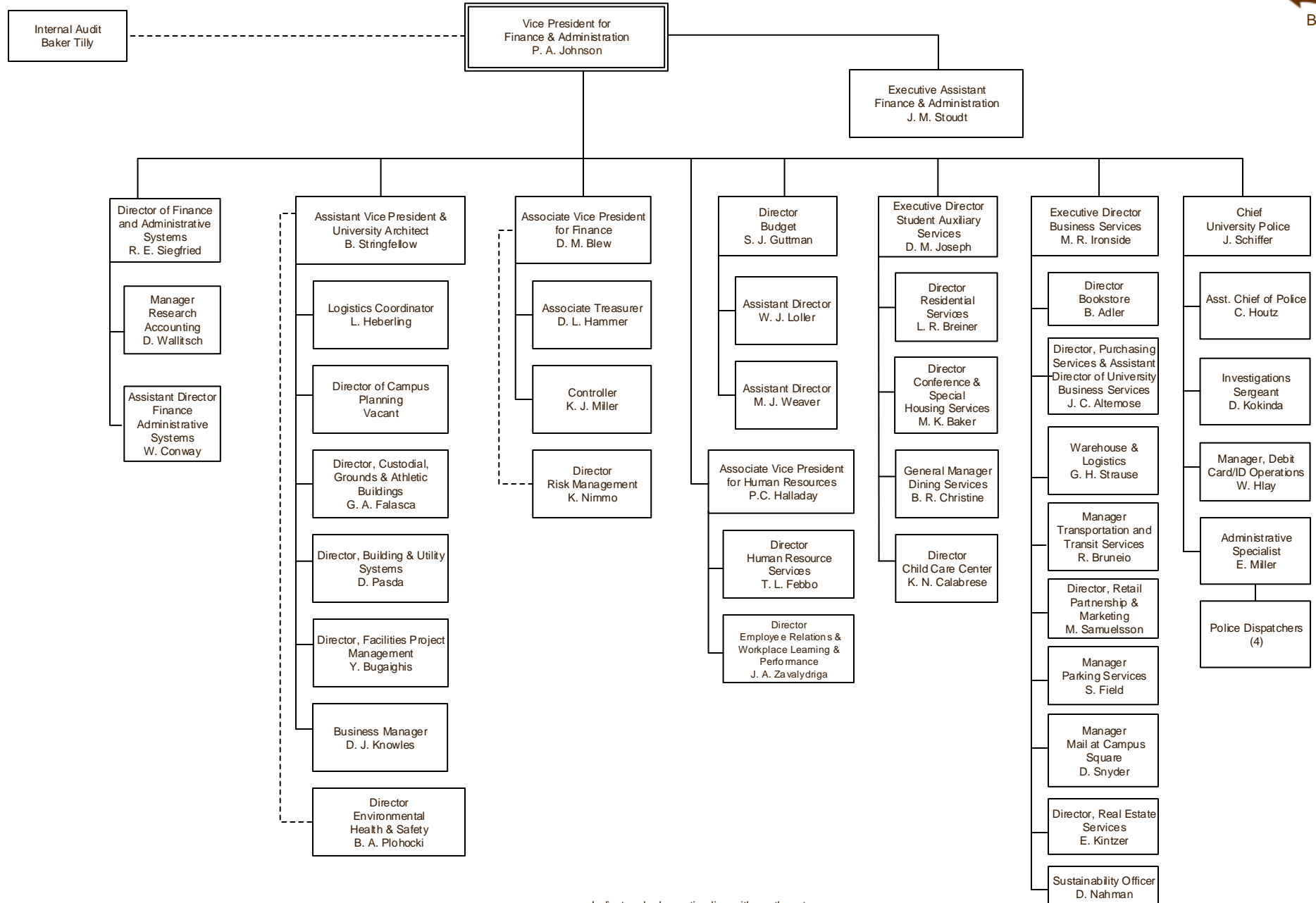
..... Indicates dual reporting line  
 ————— Indicates direct report



# Organization Chart

## Finance & Administration

Last Update:  
March 8, 2018



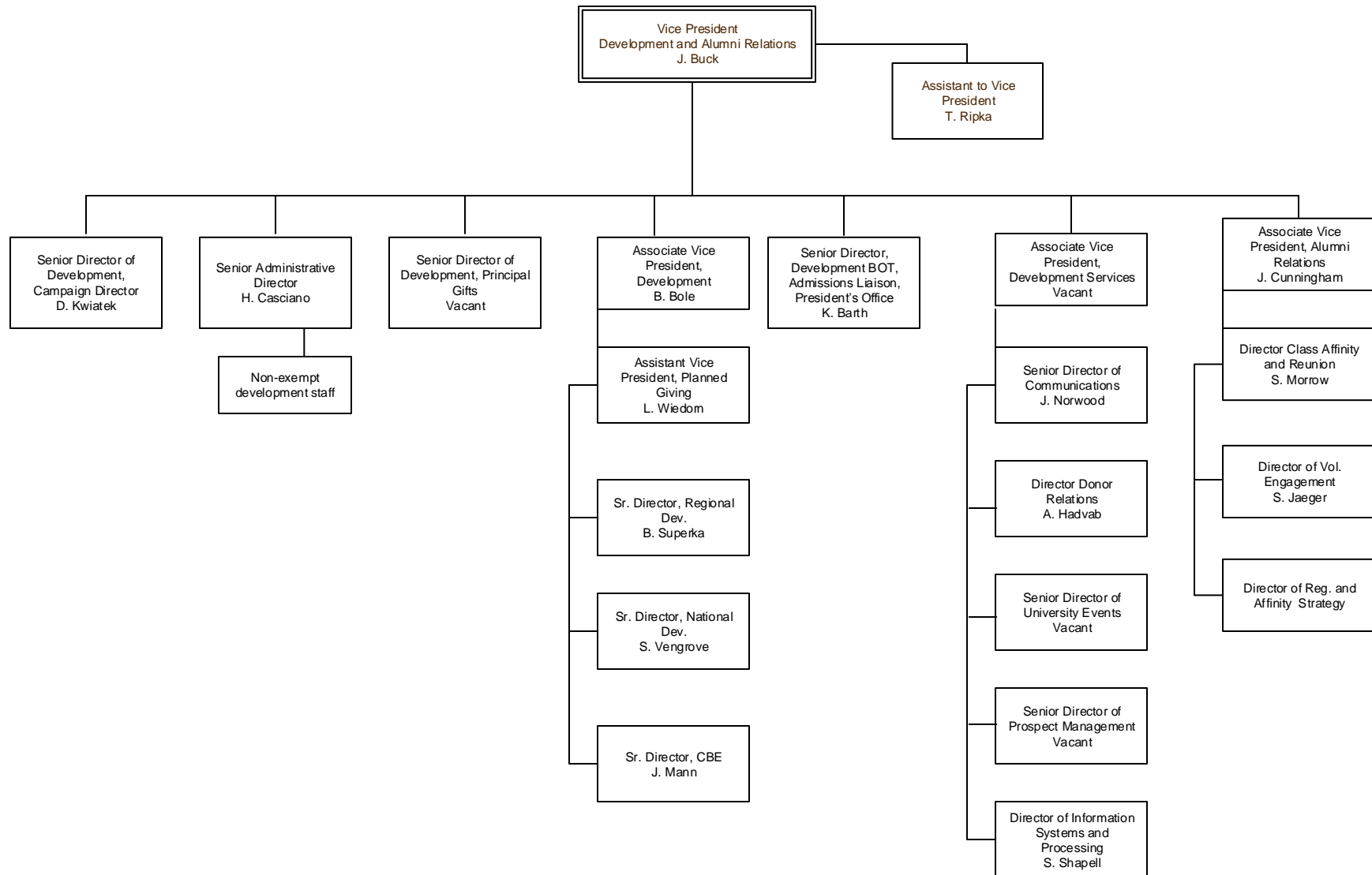
----- Indicates dual reporting line with another stem  
 \_\_\_\_\_ Indicates direct report



# Organization Chart

## Development and Alumni Relations

Last Update:  
October 13, 2017



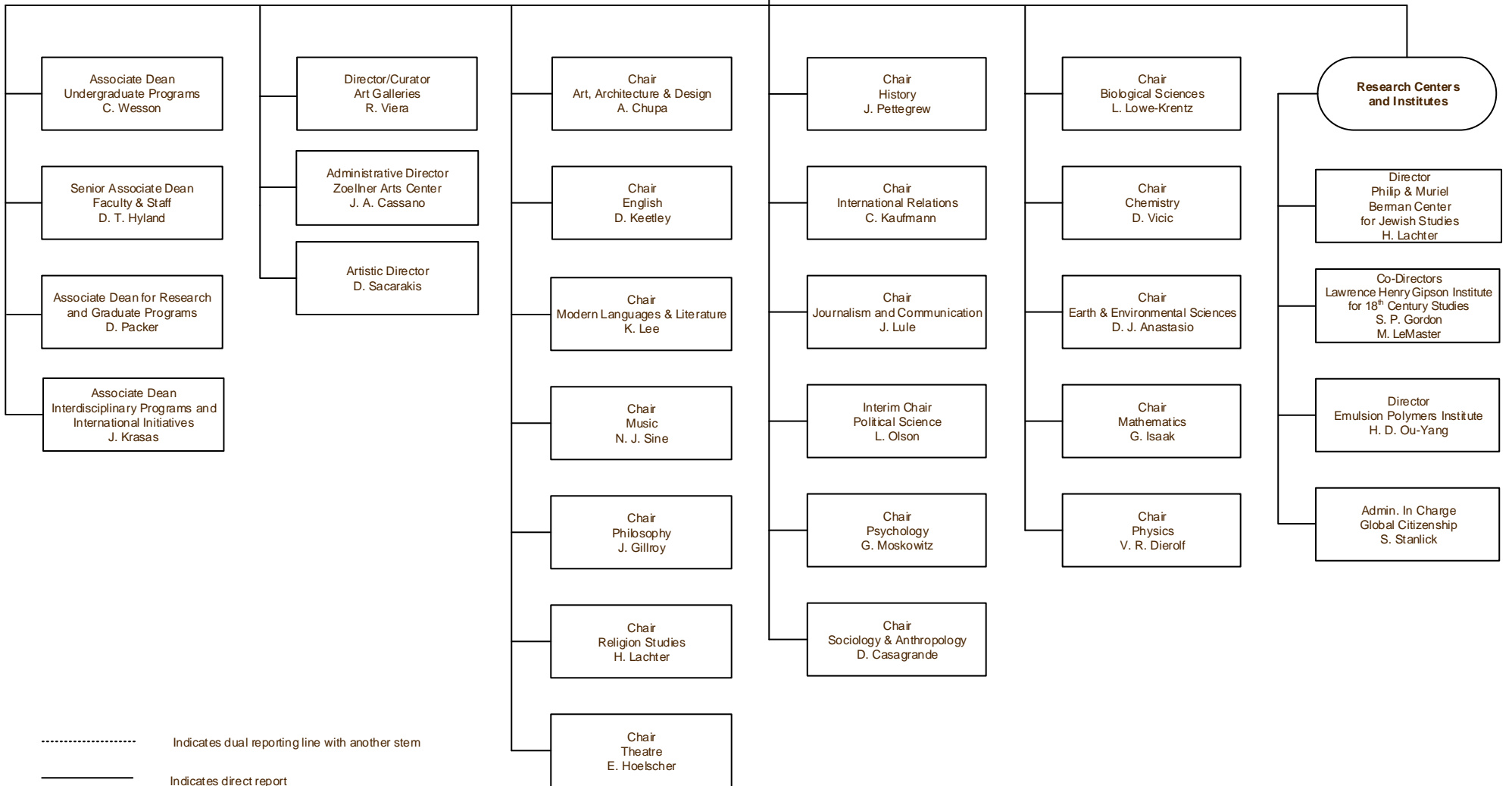
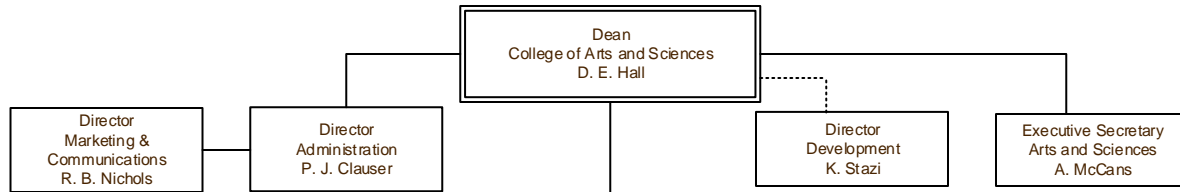
Indicates direct report



# Organization Chart

## College of Arts & Sciences

Last Update:  
October 13, 2017



..... Indicates dual reporting line with another stem  
 ————— Indicates direct report

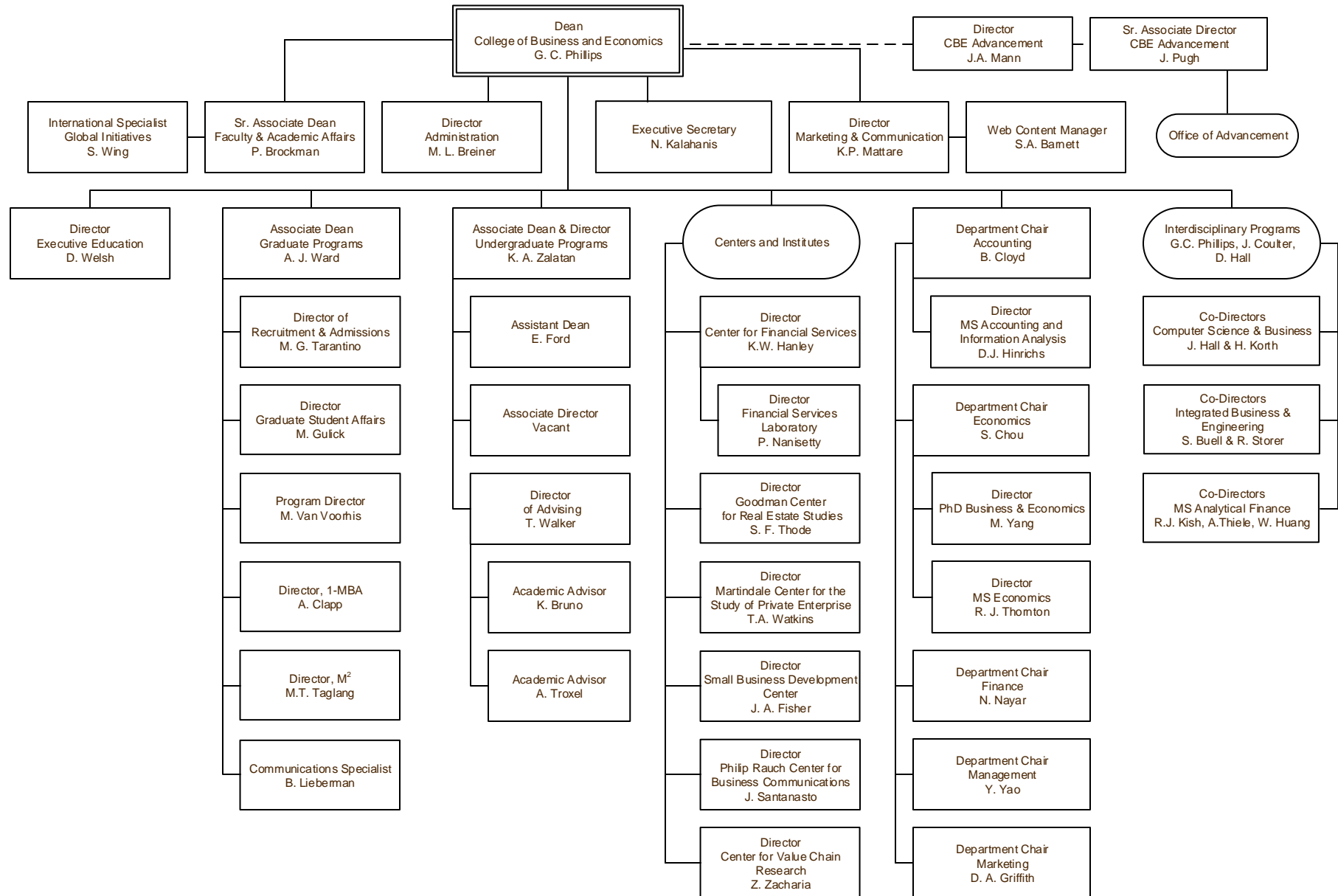




# Organization Chart

## College of Business & Economics

Last Update:  
October 13, 2017



----- Indicates dual reporting line  
 \_\_\_\_\_ Indicates direct report



# Organization Chart

Last Update:  
October 13, 2017

## College of Education



Dean  
College of Education  
G. M. Sasso

Director of Development  
A. Badasarian

Executive Secretary  
M. Vant Hoogt

Director of Marketing & Communications  
T. L. Bartolet

Associate Dean  
T. Hammond

Chair  
Education and Human Services  
A. G. Inman

Director  
Centennial School  
J. Fogt

Director  
Office of International Programs  
S. J. Kazar

Director  
Center for Developing Urban  
Educational Leaders  
Vacant

Director  
Center for Promoting Research  
to Practice: Schools, Families,  
Communities  
L. Kern

Business Manager  
D. Watlington

Director  
Office of Teacher  
Certification  
L. Collins

Associate Chair of Faculty  
A. Bodzin

Associate Director  
A. Chase-Mayoral

Senior Research Program  
Development Officer  
G. M. Sierzega

Manager  
Graduate Programs  
D. M. Johnson

Program Co-Director  
Counseling Psychology  
G. L. Caskie  
C. Liang

Program Director  
Educational Leadership  
F. D. Beachum

Program Director  
School Psychology  
R. Hojnosi

Program Director  
Special Education  
L. M. Bambara

Program Director  
Teaching, Learning, and  
Technology  
H. L. Columba

Program Director  
Comparative & International  
Education  
A.W. Wiseman

----- Indicates dual reporting line  
———— Indicates direct report



# Organization Chart

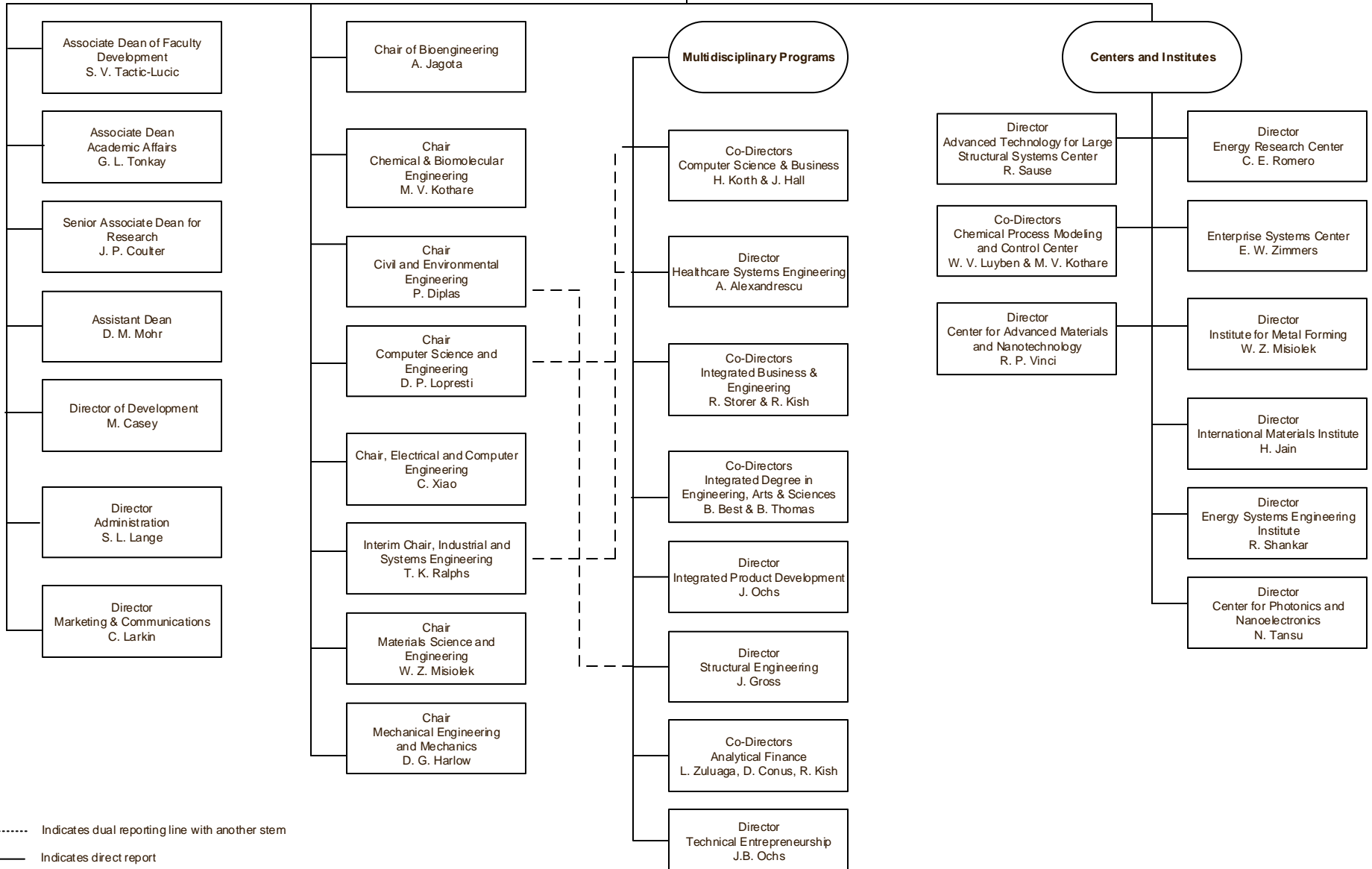
Last Update:  
January 3, 2018

## P.C. Rossin College of Engineering & Applied Science



Dean  
College of Engineering and Applied Science  
S. P. DeWeerth

Executive Secretary to the Dean  
M. R. Sheehan



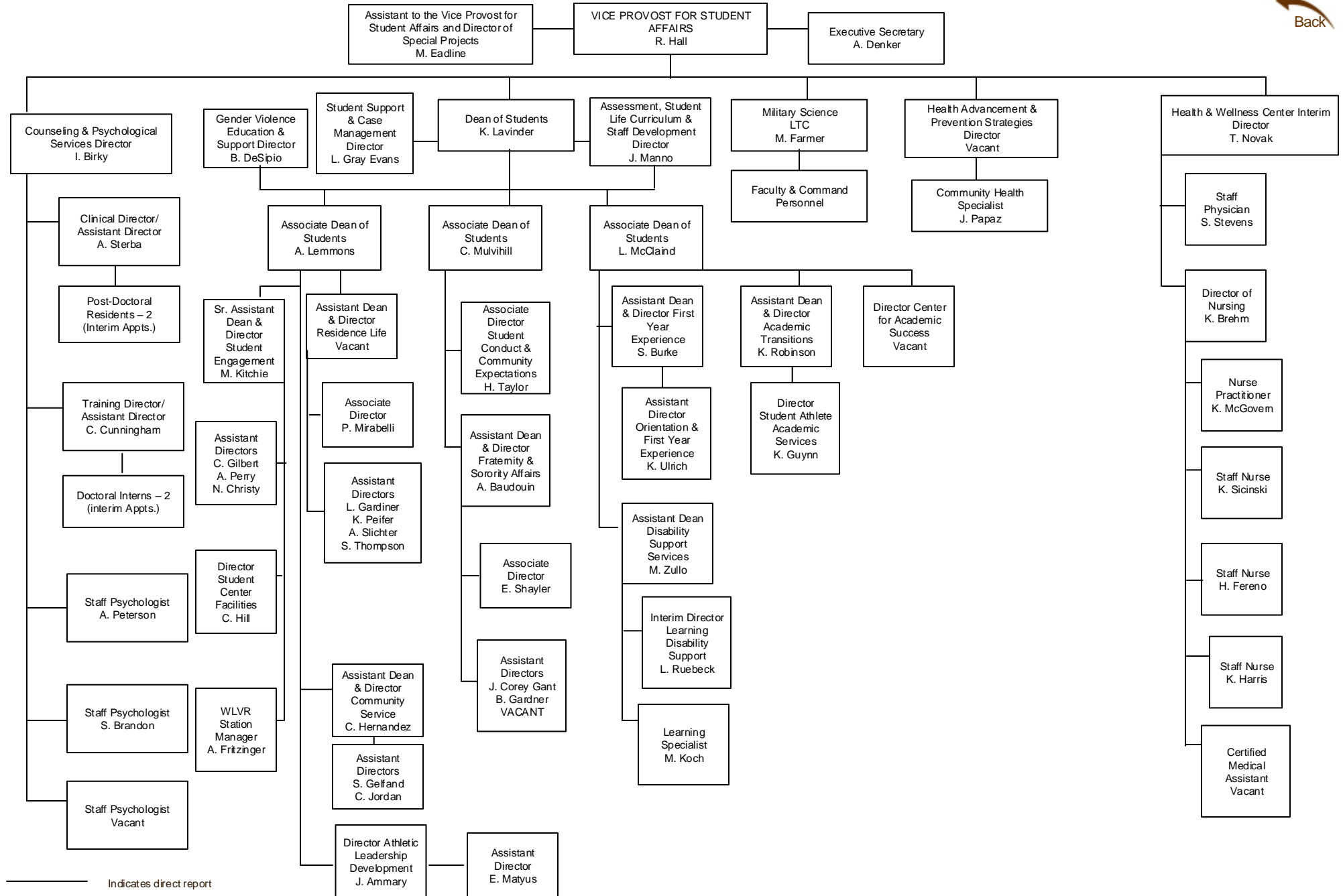


# Organization Chart

Last Update:

April 4, 2018

## Student Affairs

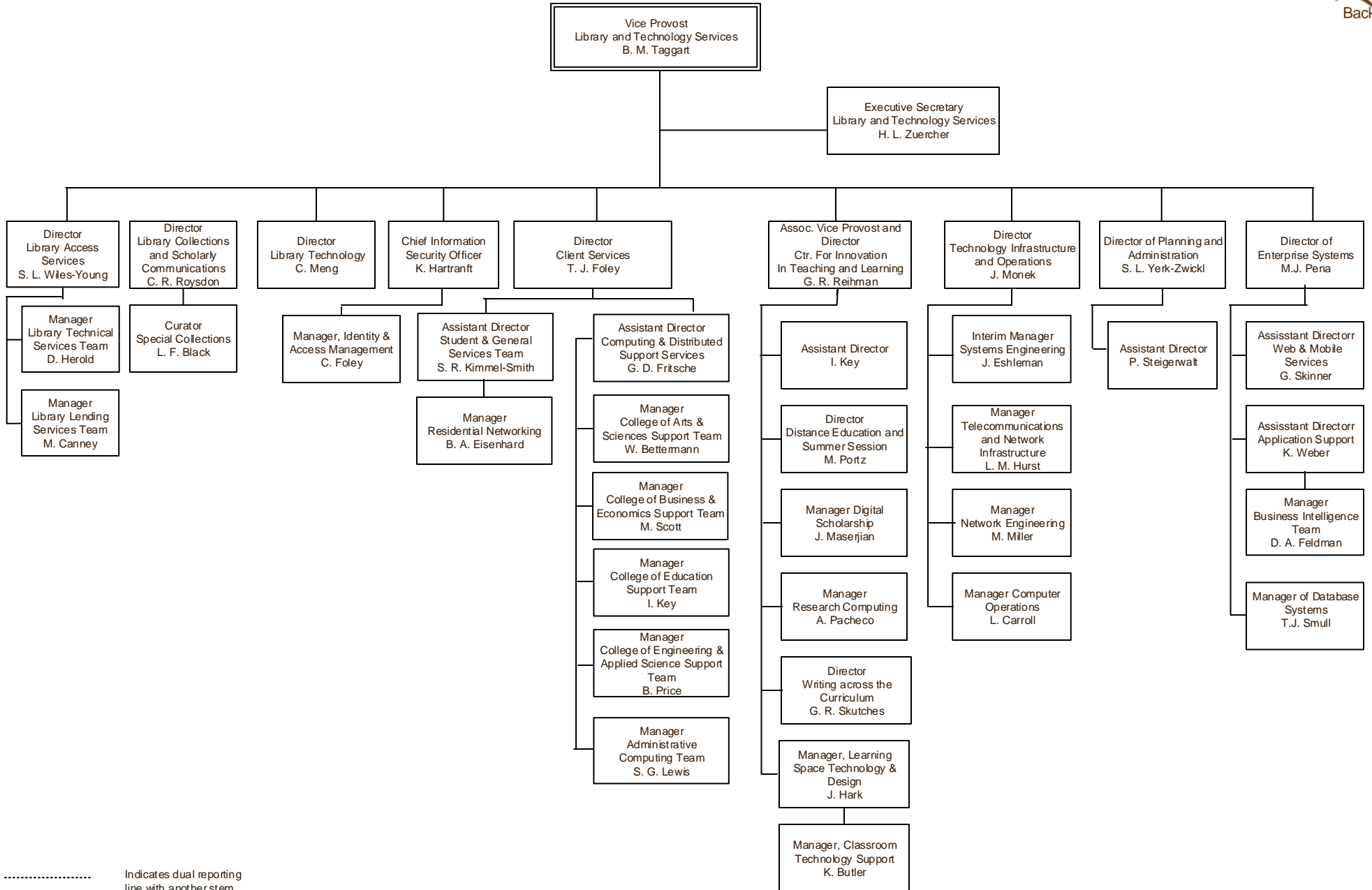




# Organization Chart

## Library & Technology Services

Last Update:  
October 13, 2017



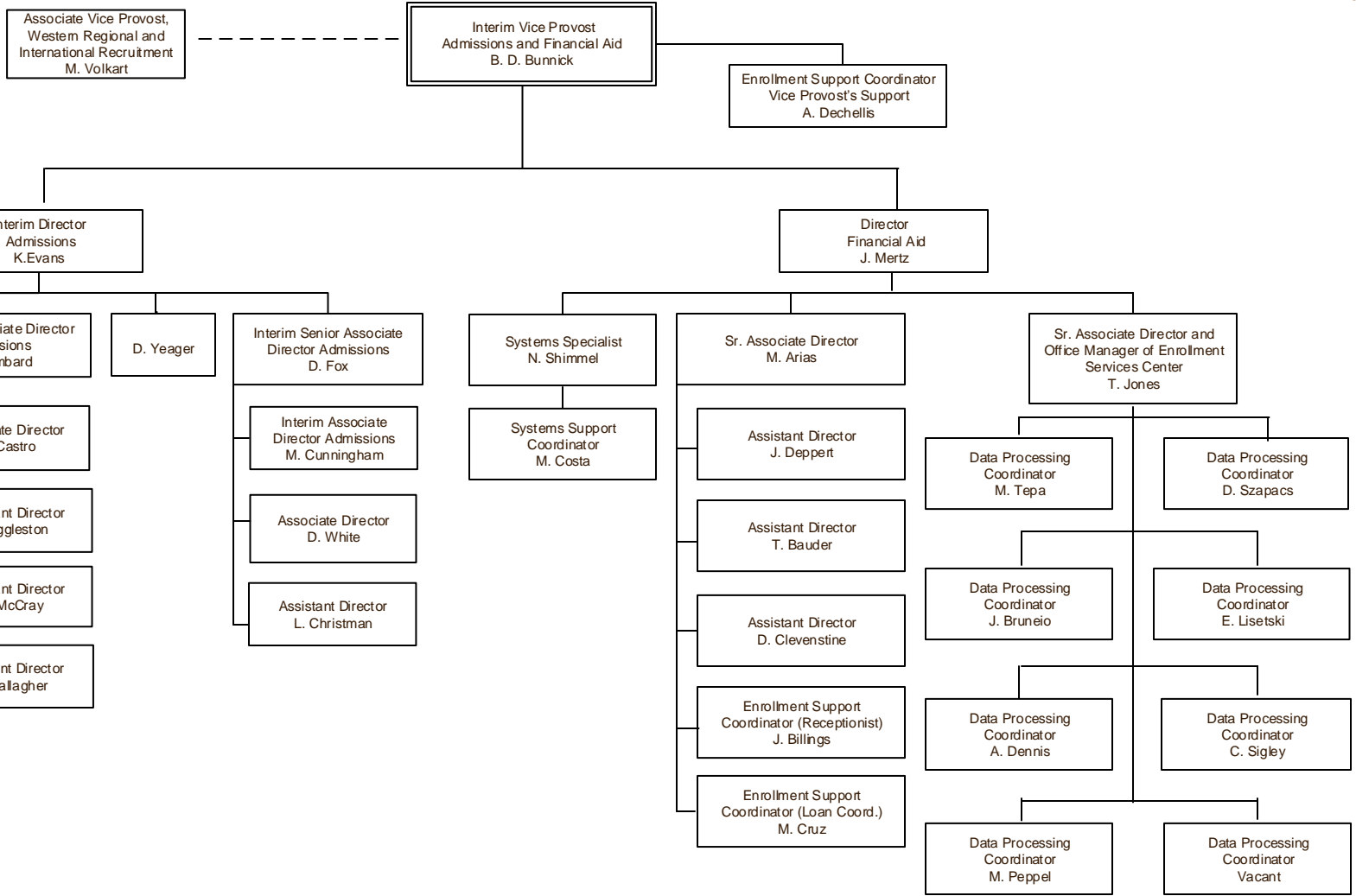
----- Indicates dual reporting line with another stem  
 \_\_\_\_\_ Indicates direct report



# Organization Chart

## Admissions & Financial Aid

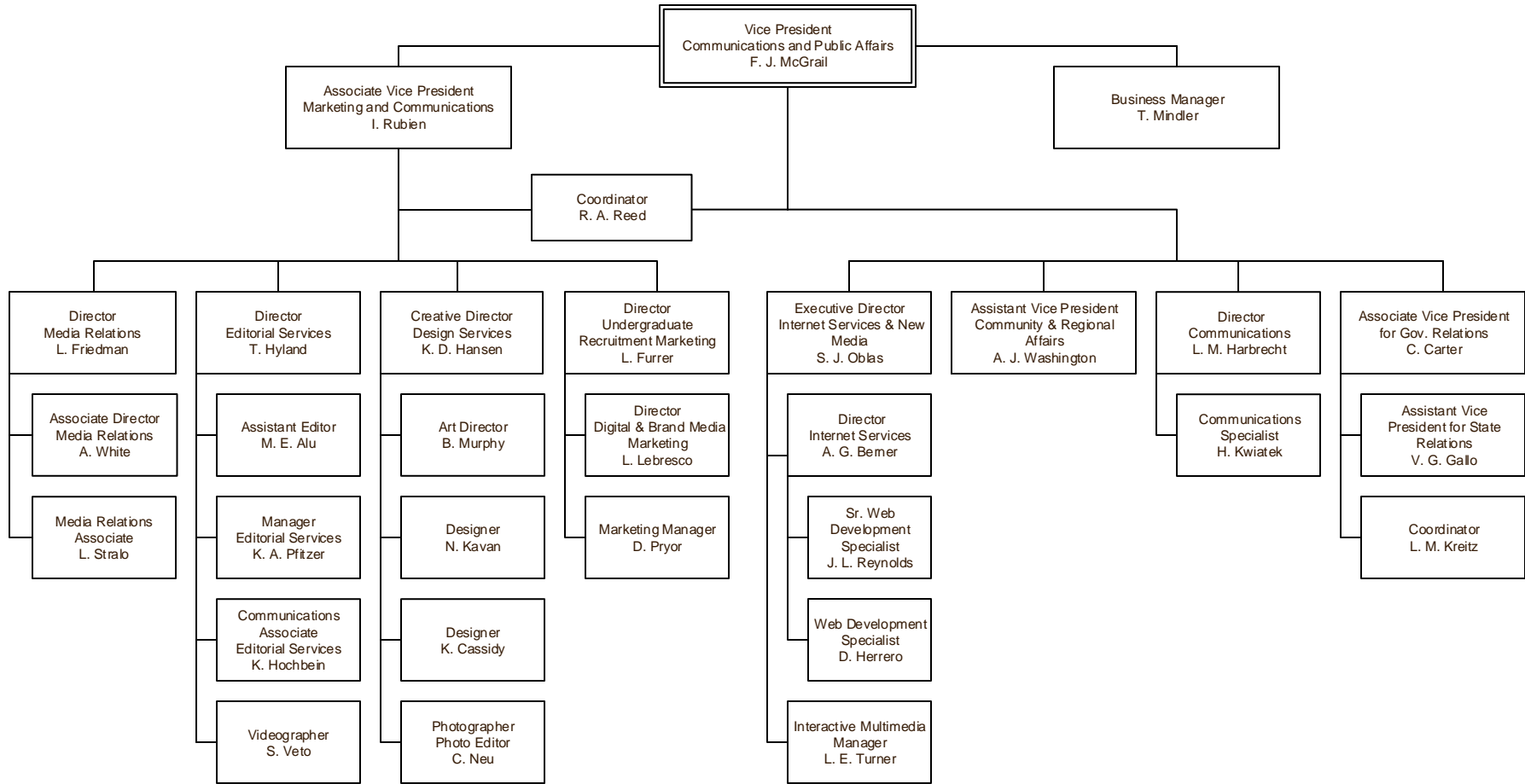
Last Update:  
January 4, 2018



————— Indicates direct report

# Organization Chart

## Communications and Public Affairs

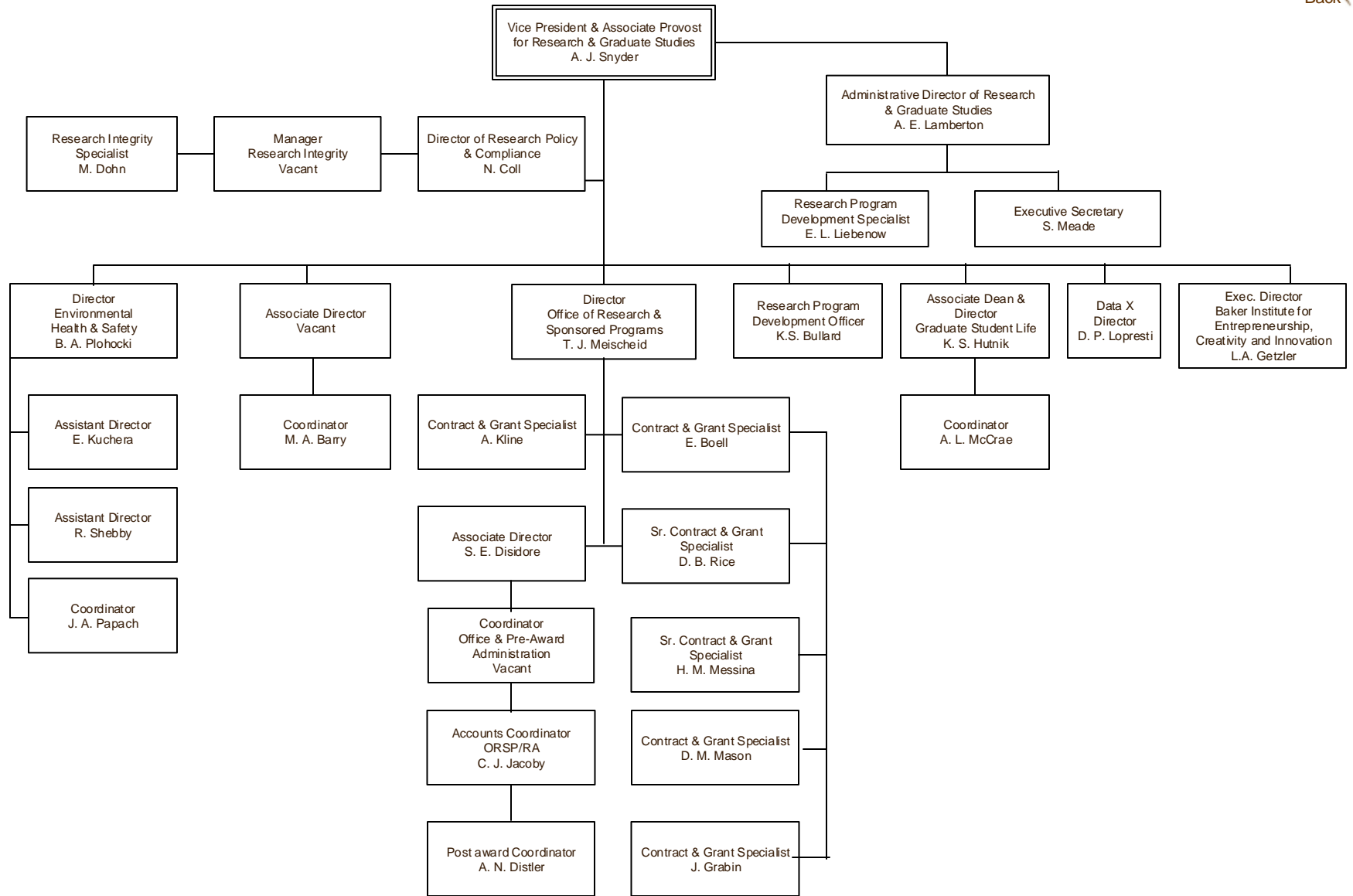




# Organization Chart

## Office of the Vice President & Associate Provost for Research & Graduate Studies

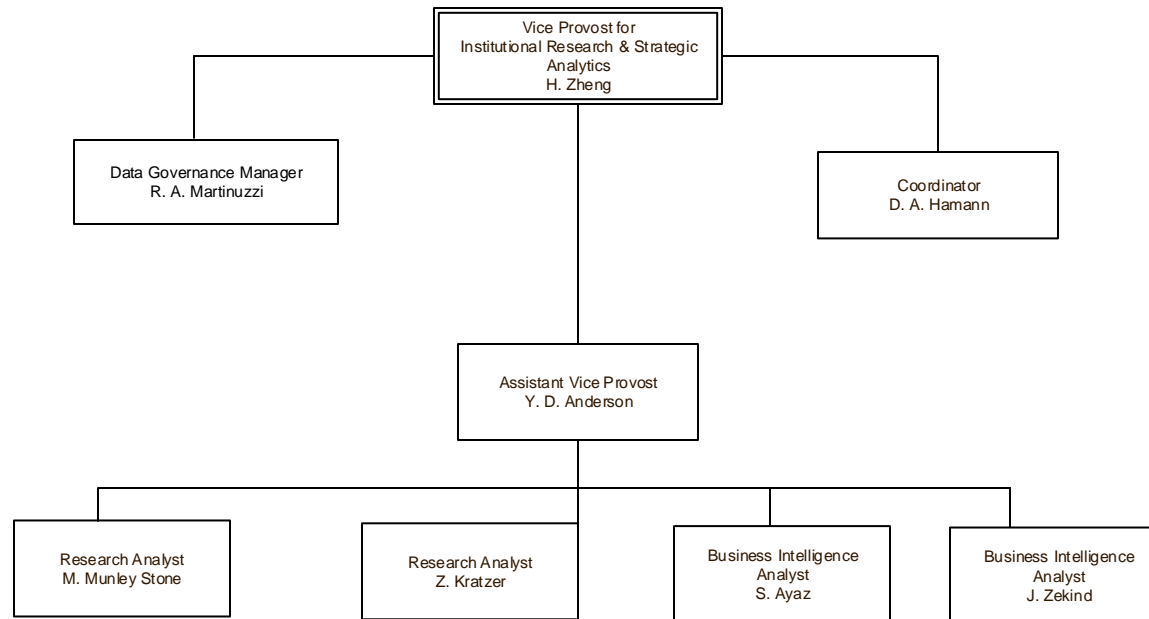
Last Update:  
2/27/2018



----- Indicates dual reporting line with another stem  
 ————— Indicates direct report



## Office of Institutional Research and Strategic Analytics



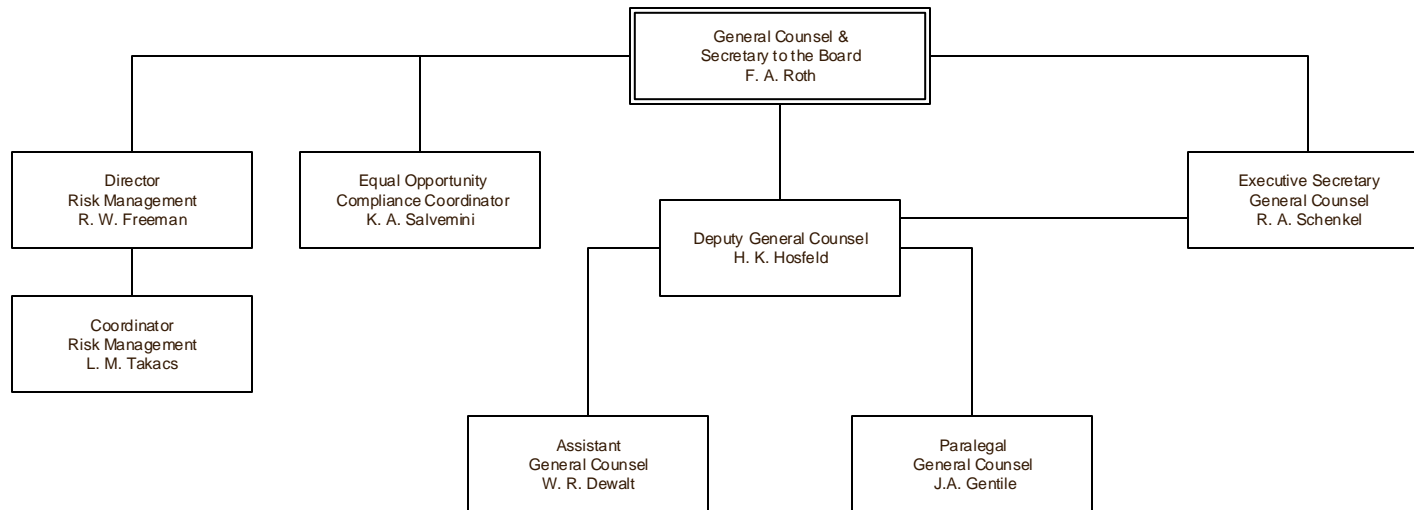


# Organization Chart

Last Update:  
October 13, 2017

## General Counsel

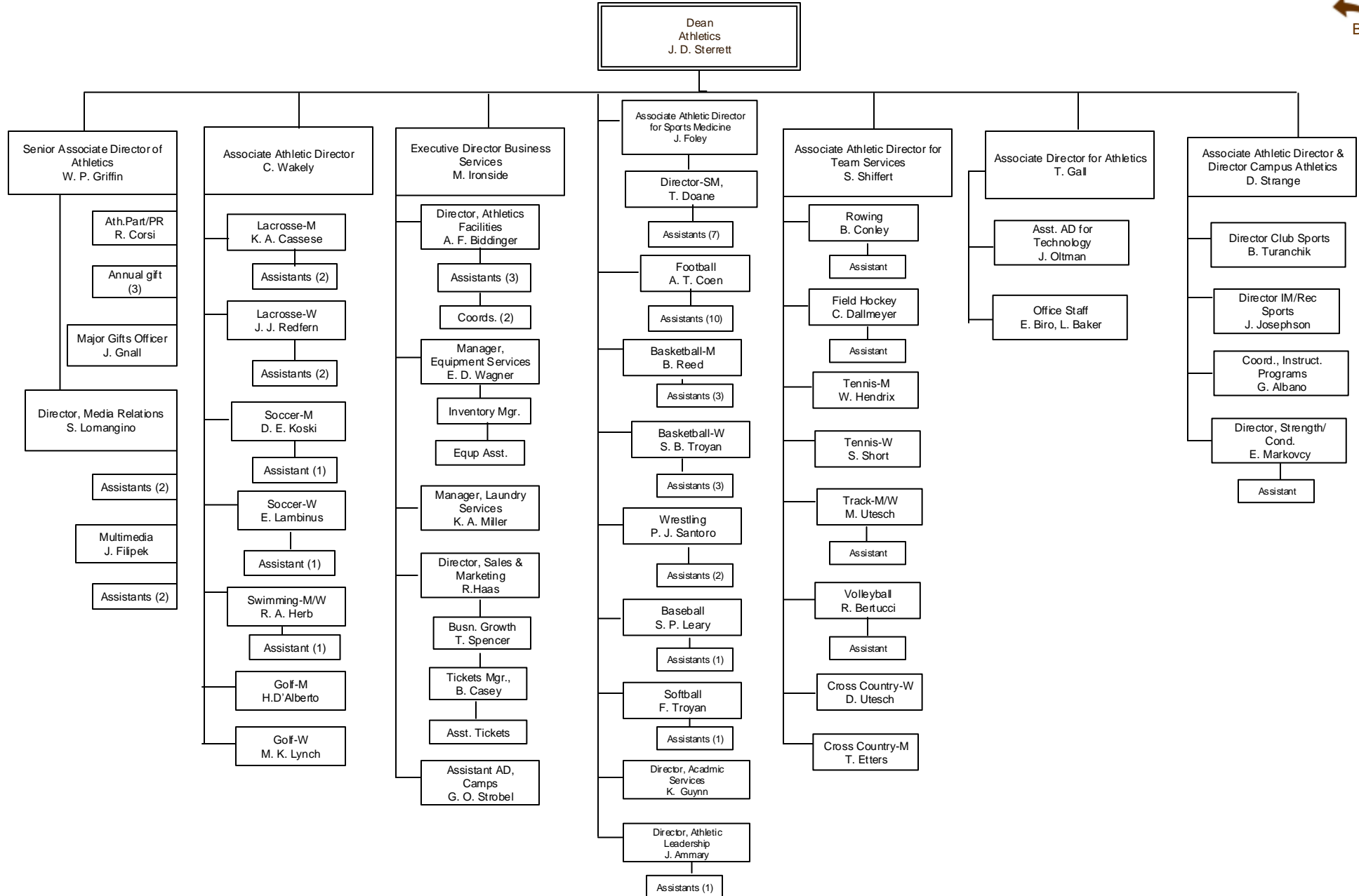
 Back



— Indicates direct report

## Athletics

[Back](#)



..... Indicates dual reporting line with another stem  
 ————— Indicates direct report

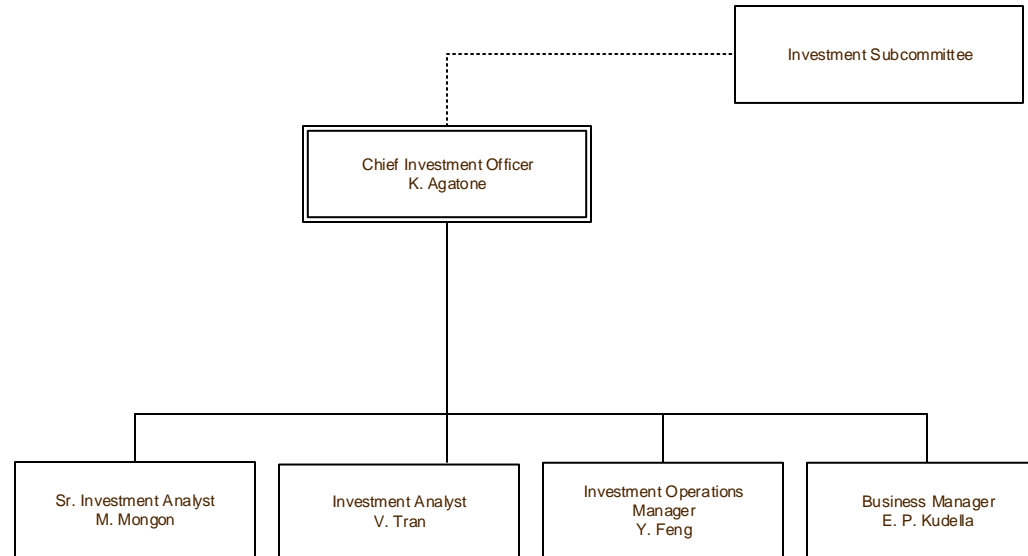


# Organization Chart

Last Update:  
October 13, 2017

## Investment Office

Back



----- Indicates dual reporting line with another stem

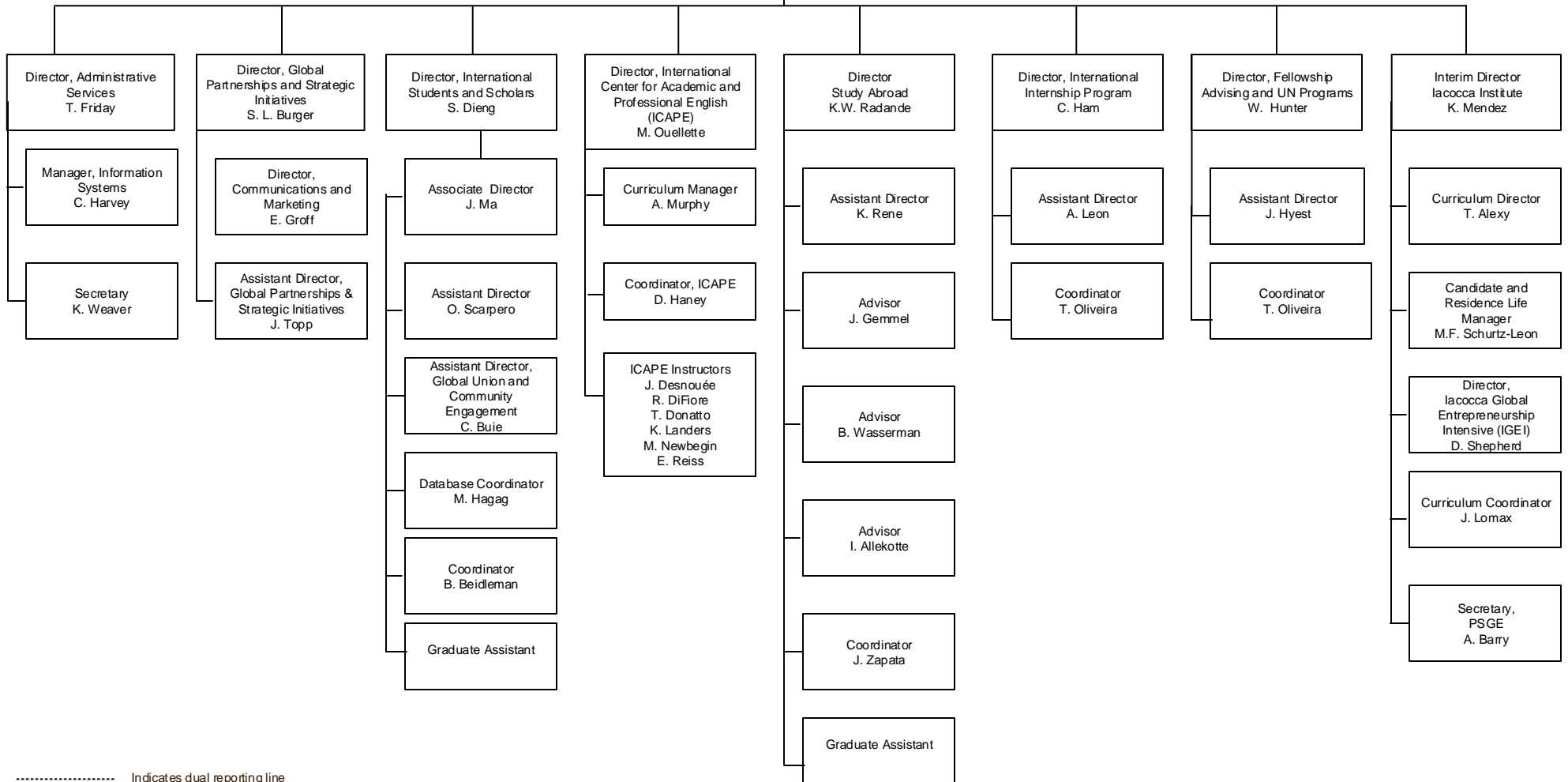
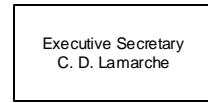
————— Indicates direct report



# Organization Chart

## International Affairs

Last Update:  
February 15, 2018



..... Indicates dual reporting line

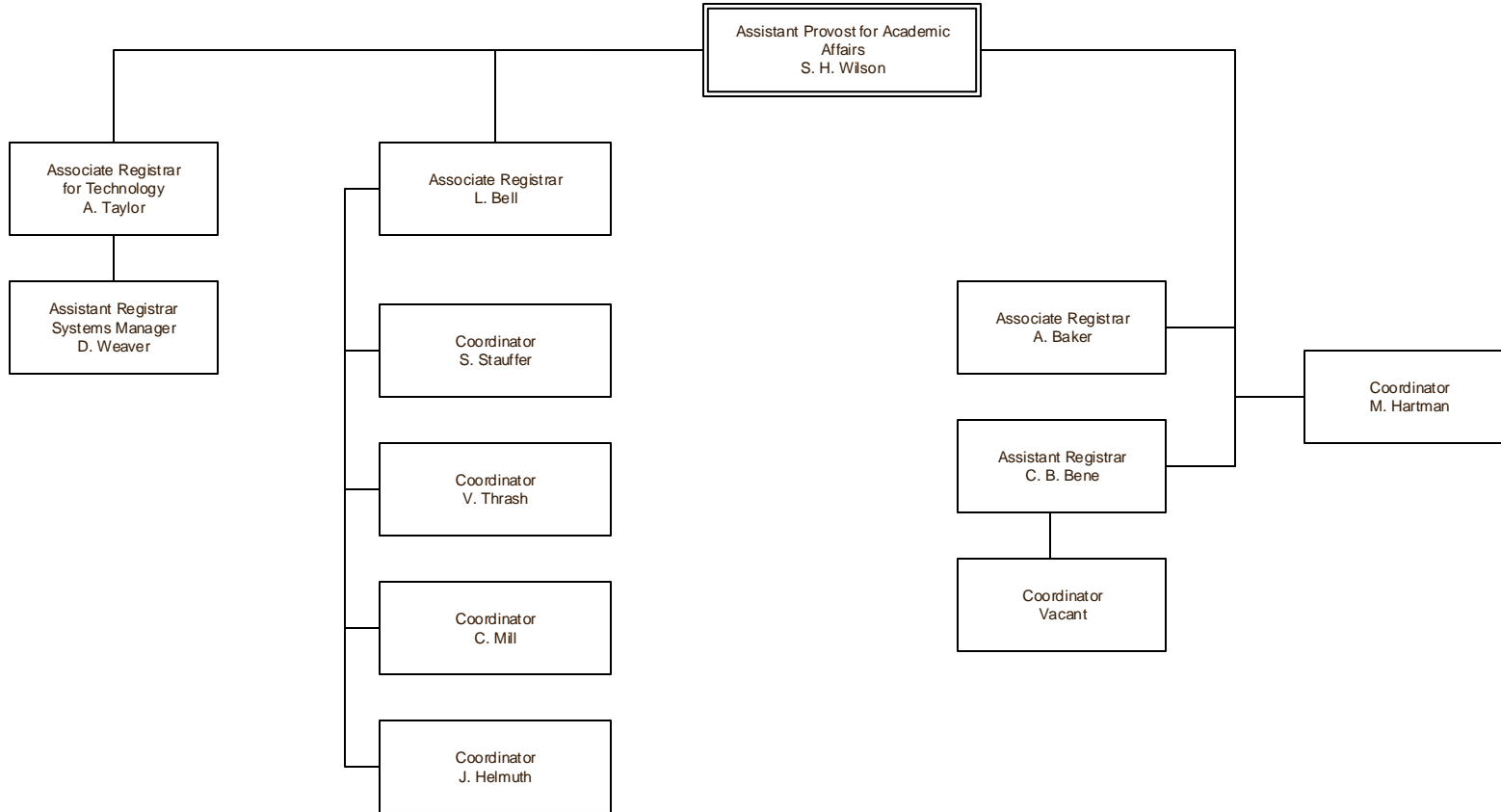
— Indicates direct report



# Organization Chart

Last Update:  
October 13, 2017

## University Registrar



— Indicates direct report