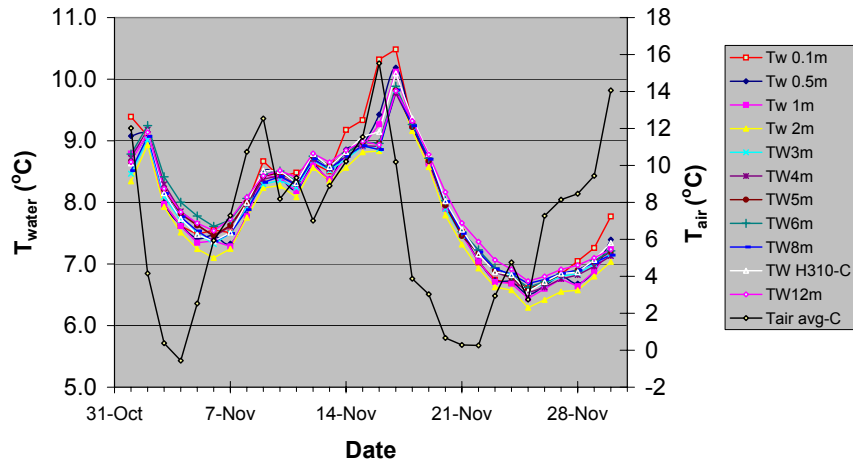


Year: 2006 Month: 11

Station moved to shallow water (ca. 2.5m max) at dock from lake center on 29 October 2006

See figure to right for actual depths of temperature sensors when weather station is in shallow water.

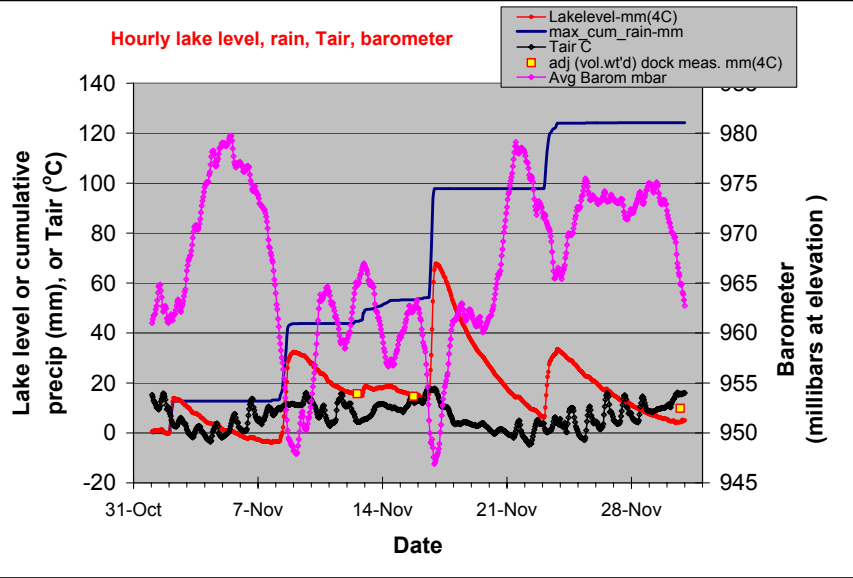
Daily average air & water temperatures



Lake level is mm above lower edge of dock metal frame (mm of water at 4°C based on pressure)
 Monthly rain to date: 4.9 inches

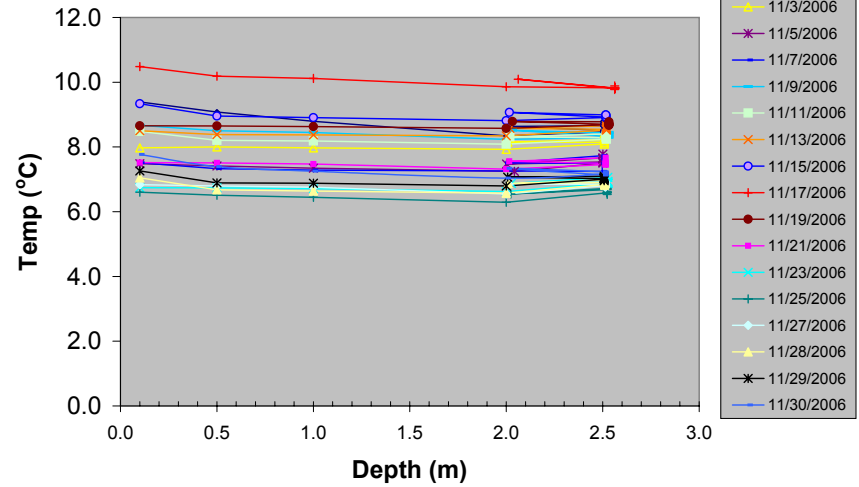
Precip from rain gage is underestimated during freezing conditions and appears late when air temperature rises above freezing. Lake rise reflects rain or the water equivalent of snow, plus runoff and snowmelt.

Hourly lake level, rain, Tair, barometer



Daily temperature vs depth

(Tw sensors in shallow water starting 4pm 28Oct06)



Hourly avg Tair, TW0.1, %RH, WS

