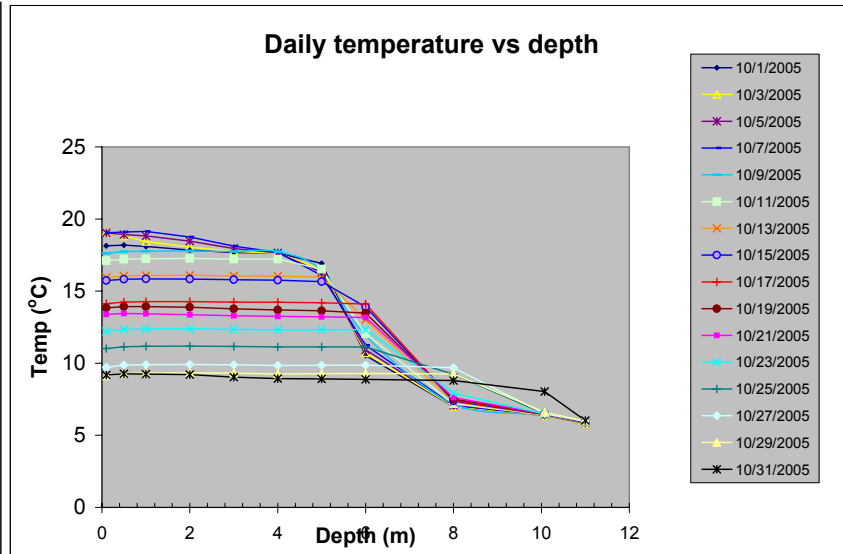
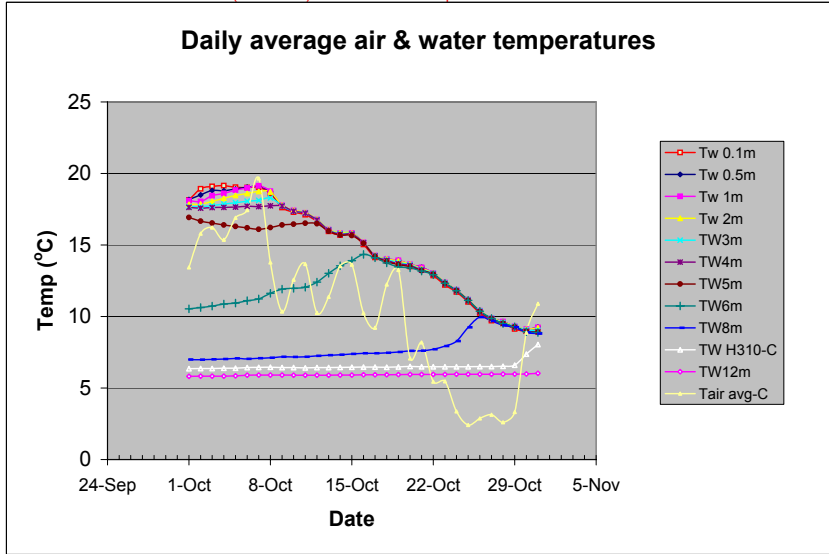


Year: 2005 Month: 10

Tw calibration revised Oct05

Note: TW12m sensor (12m cable) is on bottom at a depth closer to 11m than 12m



Level level mm above lower edge of dock metal frame (mm of water at 4°C based on pressure)
 Monthly rain to date: 10.87 inches (precip from rain gage underestimated under freezing conditions)

