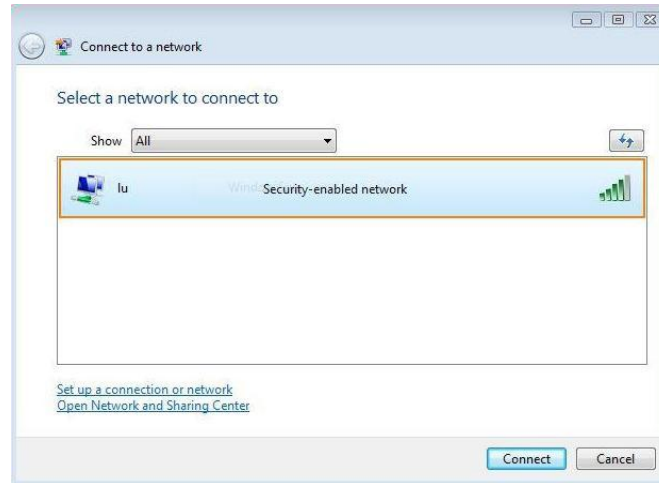


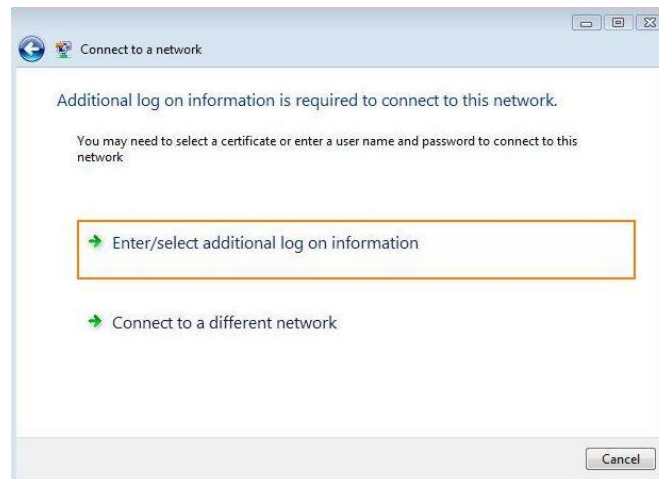
# Configuring a Windows Vista machine for the Wireless Network at Lehigh University

When already logged into machine with an AD account (e.g. faculty/staff machine):

1. Navigate to "Control Panel,"
2. Click "Classic View" on the left side of the screen
3. Double-click on "Network and Sharing Center"
4. Click "Connect to a network" on the left side of the screen.
5. Click "lu" then "Connect" on the bottom right corner of the window.



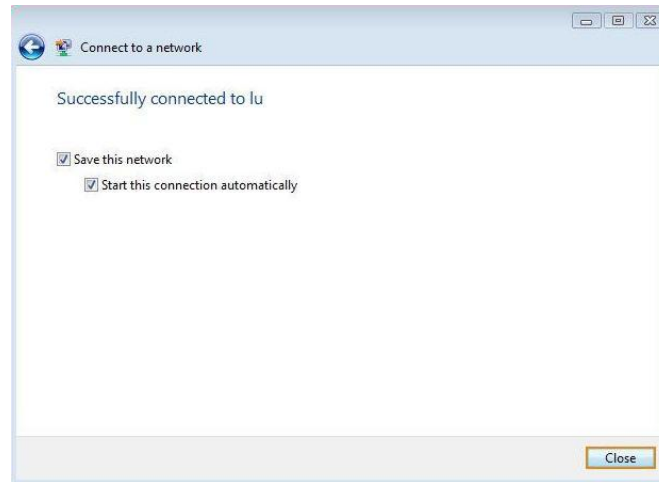
6. Click "Enter/select additional log on information."



7. Click "OK" or "View Server Certificate" if you wish to verify.

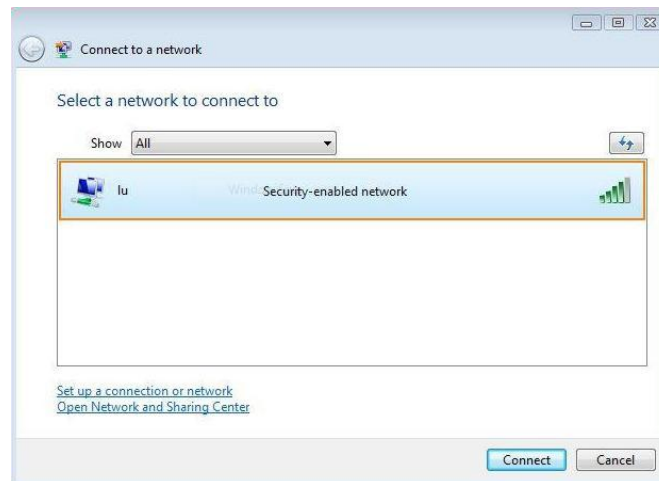


- By default "Save this network" and "Start this connection automatically" are selected. Change them if you desire. Click "Close" when finished.



**When already logged into machine using a local account (e.g. student/personal machine):**

- Navigate to "Control Panel,"
- Click "Classic View" on the left side of the screen
- Double-click on "Network and Sharing Center"
- Click "Connect to a network" on the left side of the screen.
- Click "lu" then "Connect" on the bottom right corner of the window.



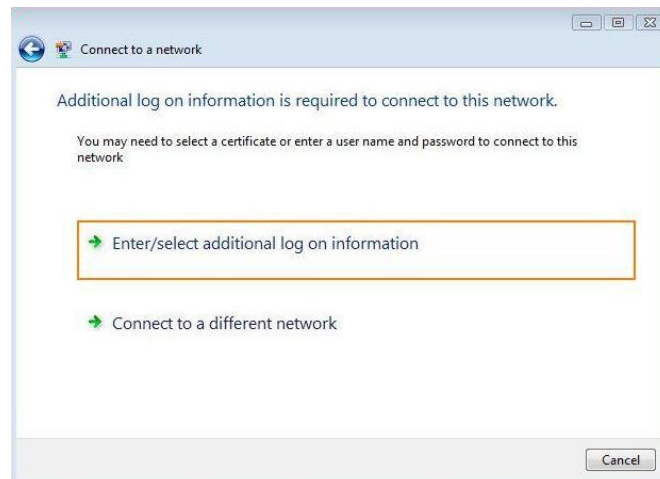
- Click "Enter/select additional log on information."



7. Enter Lehigh user name and password into the correct fields and leave "Logon domain:" blank.



8. Click "Enter/select additional log on information" a second time.



9. Click "OK" or "View Server Certificate" if you wish to verify.



10. By default "Save this network" and "Start this connection automatically" are selected. Change them if you desire. Click "Close" when finished.



### Manage or Verify Wireless Network Settings:

1. Navigate to "Control Panel,"
2. Click "Classic View" on the left side of the screen
3. Double-click on "Network and Sharing Center"
4. Click "Manage wireless networks" on the left side of the screen.
5. The wireless network "lu" should be present.

