

No. 25 • November 2003

**Lehigh University
Information Resources**

Special Collections

Flyer

Slate, Sinkholes and Cement

When did the ice cream industry start in Northampton County? Where is Chickentown and how did it derive this name? What area was known as the “granary” for Washington’s forces during the Revolution? What is the history of the slate industry in the region? How can I learn more about the Hardyston Quartzite used as a building stone at Lehigh University? How can I find a photograph of the Ueberroth zinc mine in Friedensville? How can I learn about regional pre-Cambrian rocks? Is it true that there were more than thirty roofing slate operators in Lehigh County in 1913?

A great starting point for research on these and many other questions is the new digital project, “Geology of Lehigh and Northampton counties, Pennsylvania: Historical Works”, now linked from the library homepage under Digital Library Projects, <http://www.lehigh.edu/library/library.html>.

Produced by Lehigh University Library and Technology Services, the website features two digitized

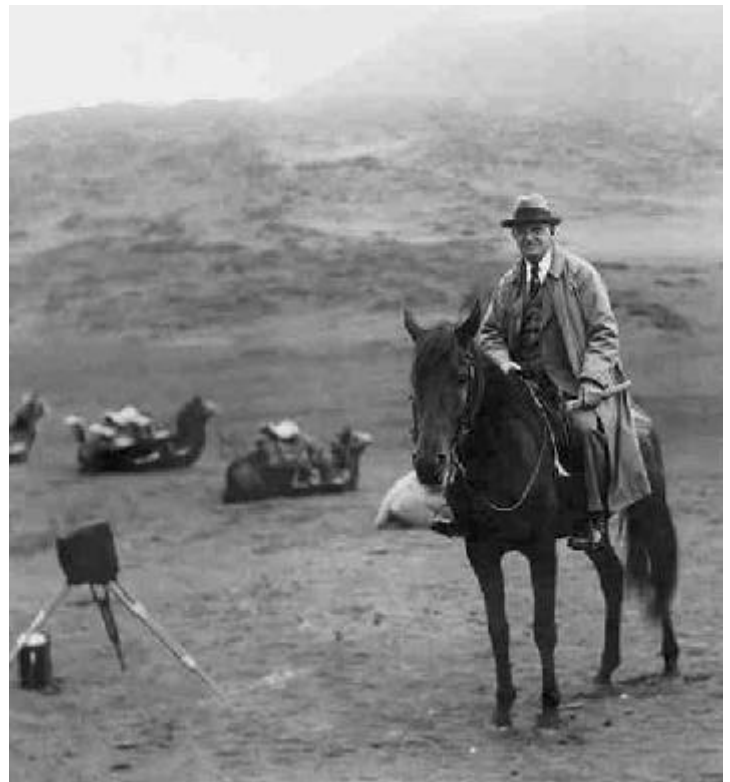
Published occasionally by Special Collections, Lehigh University Information Resources, Linderman Library, 30 Library Drive, Bethlehem, Pa. 18015-3067. To be placed on our mailing list, please write to the above address or send e-mail to inspc@lehigh.edu. Copies are also available, in pdf file format, at World Wide Web site www.lehigh.edu/library/spec.coll/spec.coll.html. Your comments and suggestions are always appreciated.

volumes from the Pennsylvania Geological Survey covering Northampton and Lehigh Counties. Lehigh University professor Benjamin L. Miller (1874-1944) was their primary author. The volumes contain a wealth of detail not only about geology, but also about local history, place-names, culture, meteorology, and economics.

A search engine, a browseable table of contents, PDF files for printing, and a “my favorites” feature all enhance the usefulness of the volumes. Included in the website are scanned images of the three large maps that accompany the volumes.

An additional feature of the website is Miller’s 1939 pamphlet, designed for the layperson and as far as possible written without technical terminology, “Guidebook to Places of Geologic Interest in the Lehigh Valley Pennsylvania.” The guidebook provides an overview of geological formations of the Lehigh Valley and sections on historical and economic geology. It includes detailed itineraries, marked with mileages. Readers will enjoy comparing what still exists and what has disappeared since its publication.

The website also has scanned memorials to Miller



MILLER ON OSHIMA ISLAND, JAPAN, 1937

that detail his highly active career. A history of the Lehigh University geology department and links to library resources, as well as photographs depicting Benjamin L. Miller and a 1942 geologic field trip,

round out the website's content.

A related exhibition is on view in Linderman Library through December. The exhibition, which starts on the first floor and continues in the Bayer Galleria of Special Collections, contains copies of the materials (including maps) digitized for the website. Also on view are samples of local rocks and fossils from Pennsylvania, including a Triassic dinosaur footprint. The exhibition features many items relating to Miller's career, including his many publications, photographs from his travels, diaries, letters, and theses written when he was at Lehigh.

The exhibition provides a colorful window into the life of a geology professor, prolific writer, world traveler, popular lecturer, and consultant. It also sheds insight into how geology was done in an earlier period.

The first floor portion of the exhibit may be viewed during Linderman Library hours. The Bayer Galleria of Rare Books is open weekdays from 1:00-5:00 and at other times by appointment.


Special Collections materials are available for research and consultation without restriction. For further information contact Philip A. Metzger, Curator of Special Collections, or Ilhan Citak, Special Collections Assistant. Reading room hours are Monday through Friday, 1 p.m. to 5 p.m. or by appointment. Telephone: (610) 758-4506; fax (610) 758-



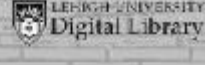
1942 GEOLOGY FIELD TRIP

6091; e-mail: inspc@lehigh.edu.


HOME PAGE OF MILLER WEBSITE



Geology of Lehigh and Northampton Counties, Pennsylvania: Historical Works



Home
About
Search
Browse
My Favorites
Print
Maps
Other Resources



Technical Requirements

Welcome

These two volumes from the Pennsylvania Geological Survey fourth series provide a wealth of detail about Lehigh and Northampton Counties, including their geography, geology, meteorology, and history.


Use the [search](#) and [browse](#) features to explore the complete volumes. A few highlights and sample topics of interest are given below to provide a sense of the wide-ranging coverage of these volumes.

Highlights and Sample Topics

Select a Topic

Character of weather in Allentown


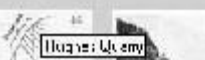

Year	Annual Precipitation	Mean Annual Temp.	Mean Annual Wind	Relative Humidity
1871	32.0	50.0	10.0	75.0
1872	31.0	50.0	10.0	75.0
1873	31.0	50.0	10.0	75.0
1874	31.0	50.0	10.0	75.0
1875	31.0	50.0	10.0	75.0
1876	31.0	50.0	10.0	75.0
1877	31.0	50.0	10.0	75.0
1878	31.0	50.0	10.0	75.0
1879	31.0	50.0	10.0	75.0
1880	31.0	50.0	10.0	75.0
1881	31.0	50.0	10.0	75.0
1882	31.0	50.0	10.0	75.0
1883	31.0	50.0	10.0	75.0
1884	31.0	50.0	10.0	75.0
1885	31.0	50.0	10.0	75.0
1886	31.0	50.0	10.0	75.0
1887	31.0	50.0	10.0	75.0
1888	31.0	50.0	10.0	75.0
1889	31.0	50.0	10.0	75.0
1890	31.0	50.0	10.0	75.0
1891	31.0	50.0	10.0	75.0
1892	31.0	50.0	10.0	75.0
1893	31.0	50.0	10.0	75.0
1894	31.0	50.0	10.0	75.0
1895	31.0	50.0	10.0	75.0
1896	31.0	50.0	10.0	75.0
1897	31.0	50.0	10.0	75.0
1898	31.0	50.0	10.0	75.0
1899	31.0	50.0	10.0	75.0
1900	31.0	50.0	10.0	75.0



Splitting the slate. Each piece is split in half until the required thickness is obtained.

Wells of Lehigh County

Name	Location	Depth	Year	Notes
1
2
3
4
5
6
7
8
9
10
11
12
13
14
15
16
17
18
19
20
21
22
23
24
25
26
27
28
29
30

This issue of the **Special Collections** *Flyer* has been prepared by Brian Simboli, science librarian, and Ilhan Citak, special collections assistant.