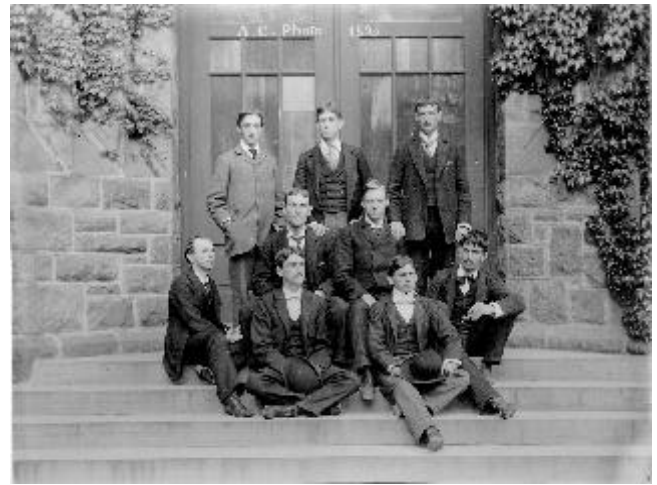


No. 12 • November 1999

Lehigh University
Information Resources

Special Collections *Flyer*



their own living quarters. In addition, they often took pictures of the interiors of other campus buildings – chemistry laboratories, gymnasias, etc. Images of these places do not, as far as anyone knows, exist anywhere else.

As to the other categories, the copies were of other photographs, magazine illustrations, or chromolithographs. They are not of much interest today.

STUDENTS OF THE '90S

By way of a greeting across the century just passing, the last issue of the SPECIAL COLLECTIONS *Flyer* of this millennium offers some photographs of students at Lehigh as they appeared on campus and in their rooms in the 1890s.

This is possible because some remarkable albums of student work in Lehigh photography classes have been preserved in Special Collections. During the 1890s, Lehigh students were offered a chance to take a class in photographic techniques, using dark-room facilities in what was then the chemistry building, Chandler Hall. This course was offered as part of the chemistry program.

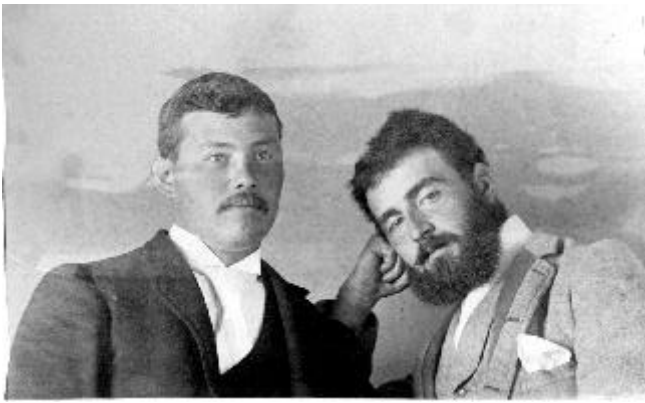
The students' final assignment in the class was to take four pictures: an interior and exterior shot, a portrait, and a copy.

The interior and exterior pictures are of special interest. The latter often included Lehigh scenes or views of the area. The focus here, however, is on the interior shots. Students frequently created pictures of



Unfortunately, however, the people in the photographs are almost never identified. Nonetheless, the feel of Lehigh in the 1890s is unmistakable. Whatever the difference in clothing and furnishings, we can see ourselves in these pictures.

– P.A.M.



Special Collections materials are available for research and consultation without restriction. For further information contact Philip A. Metzger, Curator of Special Collections, or Marie Boltz, Special Collections Assistant. Reading room hours are Monday through Friday, 1 p.m. to 5 p.m. or by appointment. Telephone: (610) 758-4506; fax (610) 758-6091 (new); e-mail: inspc@lehigh.edu.