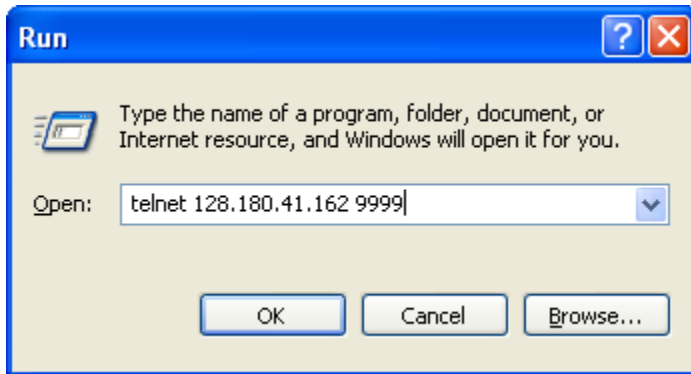


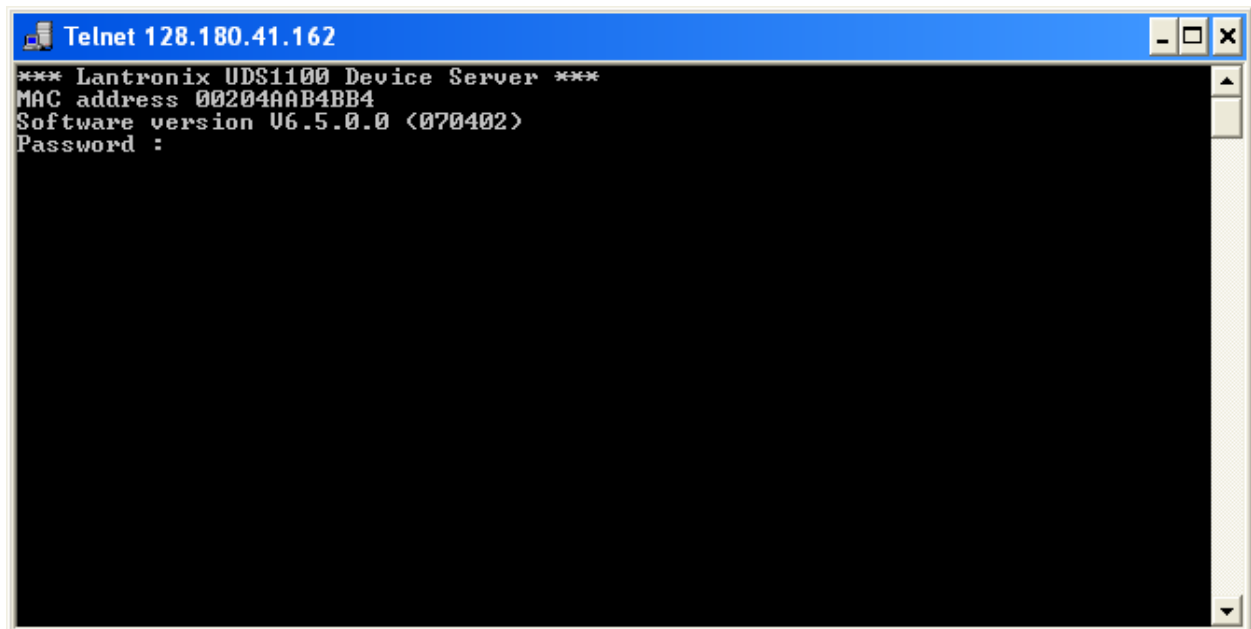
Lehigh University Recommended Lantronix UDS Settings

Follow these guidelines for a more secure Lantronix setup on Lehigh's network.

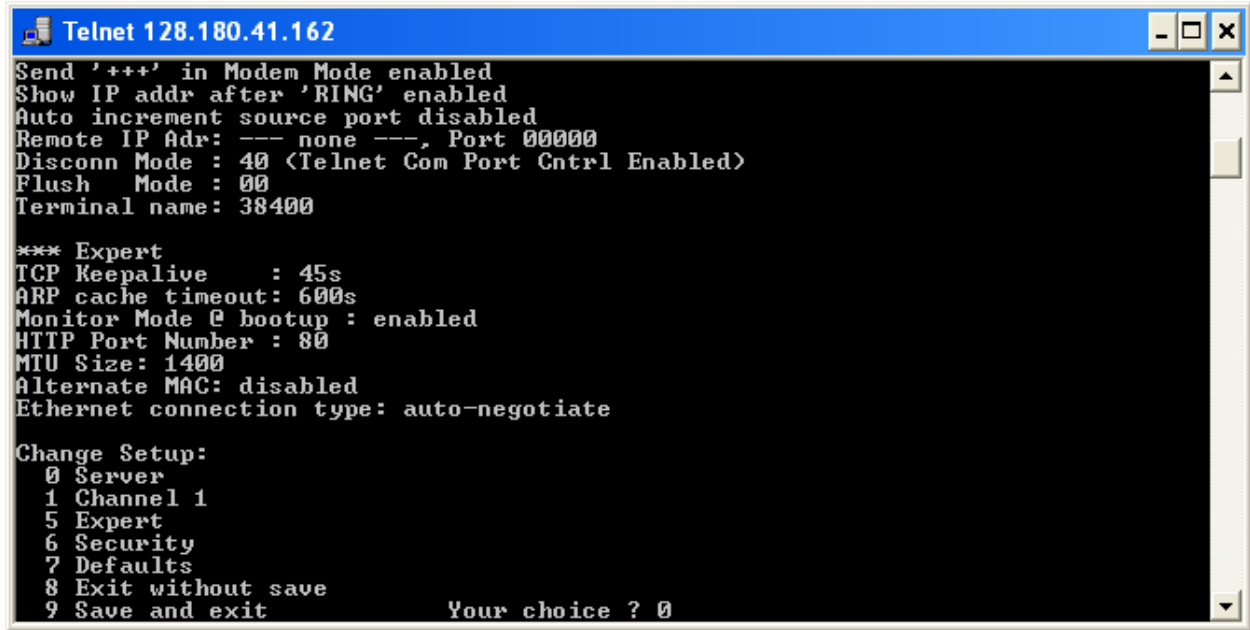
1. Start -> Run -> telnet 128.180.xxx.yyy 9999



2. Type your password and press <ENTER>



3. Select option zero and press <ENTER>

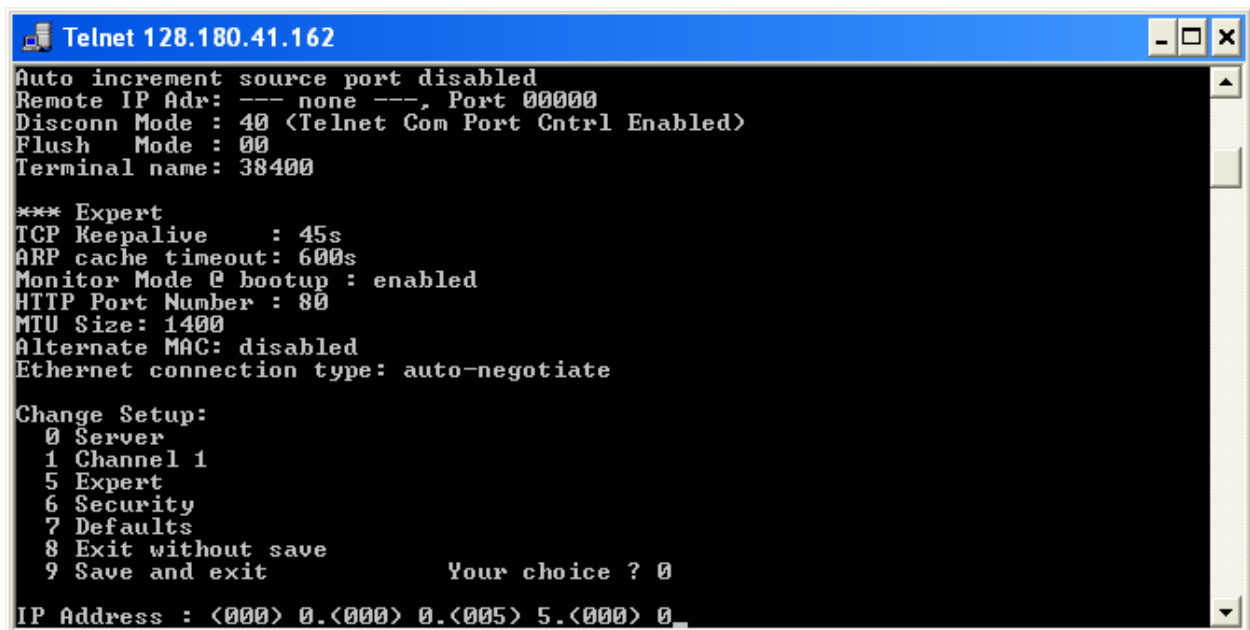


```
Telnet 128.180.41.162
Send '+++' in Modem Mode enabled
Show IP addr after 'RING' enabled
Auto increment source port disabled
Remote IP Adr: --- none ---, Port 00000
Disconn Mode : 40 <Telnet Com Port Cntrl Enabled>
Flush Mode : 00
Terminal name: 38400

*** Expert
TCP Keepalive      : 45s
ARP cache timeout: 600s
Monitor Mode @ bootup : enabled
HTTP Port Number  : 80
MTU Size: 1400
Alternate MAC: disabled
Ethernet connection type: auto-negotiate

Change Setup:
 0 Server
 1 Channel 1
 5 Expert
 6 Security
 7 Defaults
 8 Exit without save
 9 Save and exit
Your choice ? 0
```

4. Instruct the Lantronix box to use DHCP by entering 0.0.5.0 and press <ENTER>. Note that the screen display the current values as you type in the new ones.



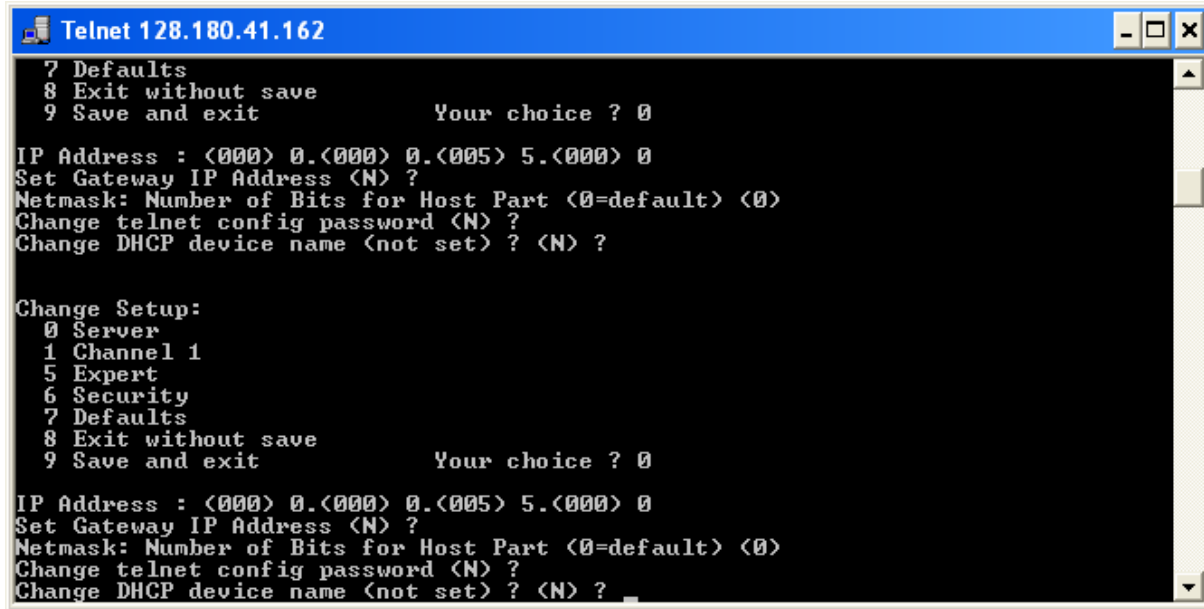
```
Telnet 128.180.41.162
Auto increment source port disabled
Remote IP Adr: --- none ---, Port 00000
Disconn Mode : 40 <Telnet Com Port Cntrl Enabled>
Flush Mode : 00
Terminal name: 38400

*** Expert
TCP Keepalive      : 45s
ARP cache timeout: 600s
Monitor Mode @ bootup : enabled
HTTP Port Number  : 80
MTU Size: 1400
Alternate MAC: disabled
Ethernet connection type: auto-negotiate

Change Setup:
 0 Server
 1 Channel 1
 5 Expert
 6 Security
 7 Defaults
 8 Exit without save
 9 Save and exit
Your choice ? 0

IP Address : <000> 0.<000> 0.<005> 5.<000> 0
```

5. Repeatedly press <ENTER> to leave all settings as their defaults. We will set up an enhanced password shortly.



```
Telnet 128.180.41.162
7 Defaults
8 Exit without save
9 Save and exit          Your choice ? 0

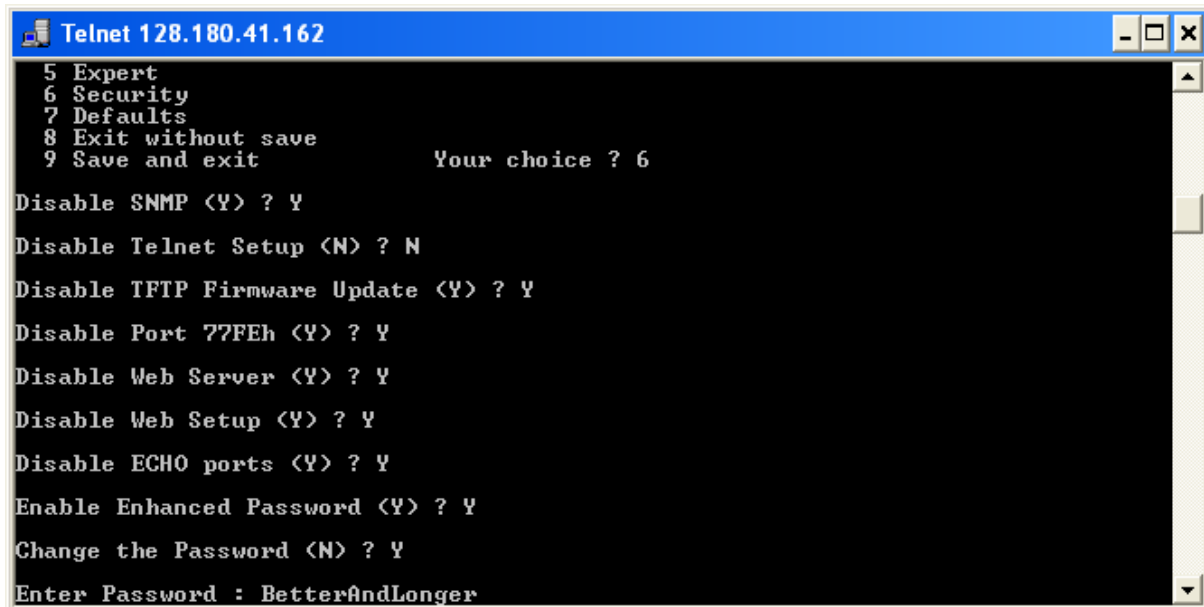
IP Address : <000> 0.<000> 0.<005> 5.<000> 0
Set Gateway IP Address <N> ?
Netmask: Number of Bits for Host Part <0=default> <0>
Change telnet config password <N> ?
Change DHCP device name <not set> ? <N> ?

Change Setup:
0 Server
1 Channel 1
5 Expert
6 Security
7 Defaults
8 Exit without save
9 Save and exit          Your choice ? 0

IP Address : <000> 0.<000> 0.<005> 5.<000> 0
Set Gateway IP Address <N> ?
Netmask: Number of Bits for Host Part <0=default> <0>
Change telnet config password <N> ?
Change DHCP device name <not set> ? <N> ?
```

6. Select option six and press <ENTER>

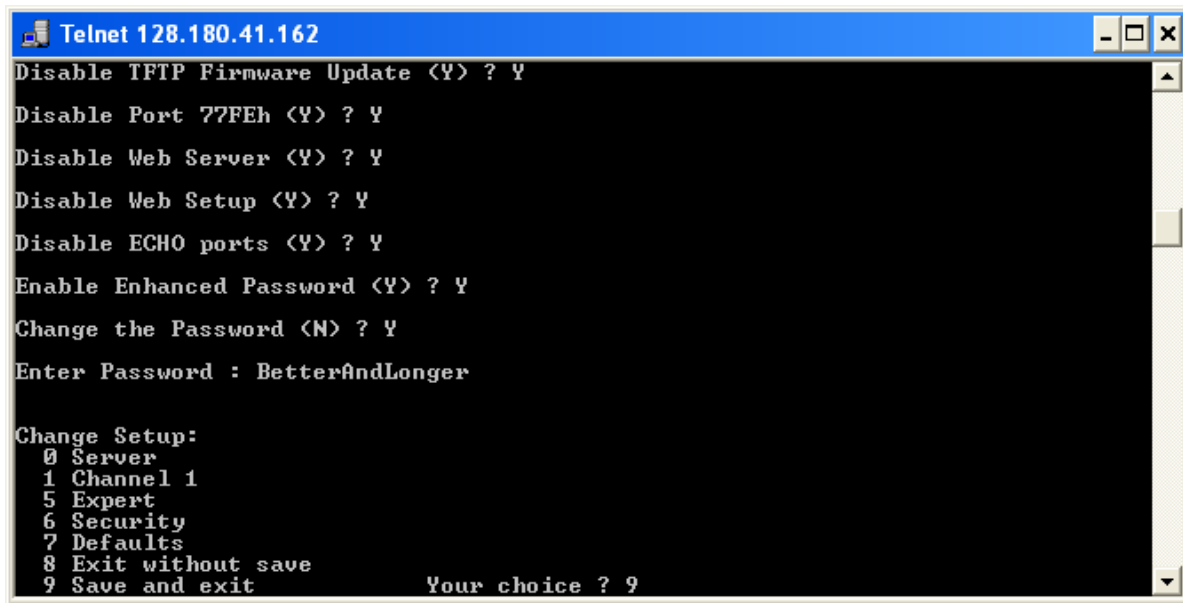
```
Disable SNMP =          Yes
Disable Telnet =       No (or you will physically have to visit each Lantronix box
                        to change anything in the future)
Disable TFTP =         Yes
Disable Port 77FEh =   Yes
Disable Web Server =   Yes
Disable Web Setup =    Yes
Disable ECHO Ports =   Yes
Enable Enhanced Pwd =  Yes
Change the Password =  Yes (set your new longer password here)
```



```
Telnet 128.180.41.162
5 Expert
6 Security
7 Defaults
8 Exit without save
9 Save and exit          Your choice ? 6

Disable SNMP <Y> ? Y
Disable Telnet Setup <N> ? N
Disable TFTP Firmware Update <Y> ? Y
Disable Port 77FEh <Y> ? Y
Disable Web Server <Y> ? Y
Disable Web Setup <Y> ? Y
Disable ECHO ports <Y> ? Y
Enable Enhanced Password <Y> ? Y
Change the Password <N> ? Y
Enter Password : BetterAndLonger
```

7. Select option nine and press <ENTER> to Save & Exit

A screenshot of a Telnet window titled "Telnet 128.180.41.162". The window contains a text-based menu with the following options:

```
Disable TFTP Firmware Update <Y> ? Y
Disable Port 77FEh <Y> ? Y
Disable Web Server <Y> ? Y
Disable Web Setup <Y> ? Y
Disable ECHO ports <Y> ? Y
Enable Enhanced Password <Y> ? Y
Change the Password <N> ? Y
Enter Password : BetterAndLonger

Change Setup:
 0 Server
 1 Channel 1
 5 Expert
 6 Security
 7 Defaults
 8 Exit without save
 9 Save and exit
```

The prompt "Your choice ? 9" is visible at the bottom right of the menu.

The Lantronix box is now as secure as it can be.

mm08 & sgl3 4/2009