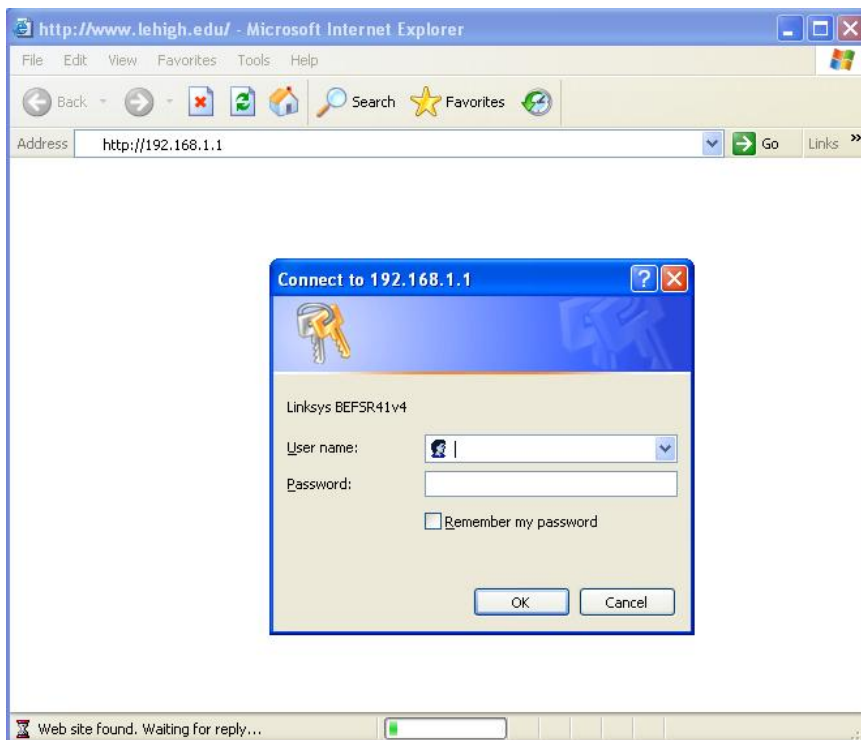


Configuring the Linksys BEFSR41 router to facilitate the operation of non-DHCP devices

- 1.) Throw away the startup CD that shipped with the unit. It is not helpful.
- 2.) Plug the router into AC power.
- 3.) Using a LAN cable, plug a PC (desktop or laptop) into the back of the router in the jack #1.
- 4.) Start Internet Explorer. Go to the webpage <http://192.168.1.1> When asked to log in use the username “admin” and the password “admin”



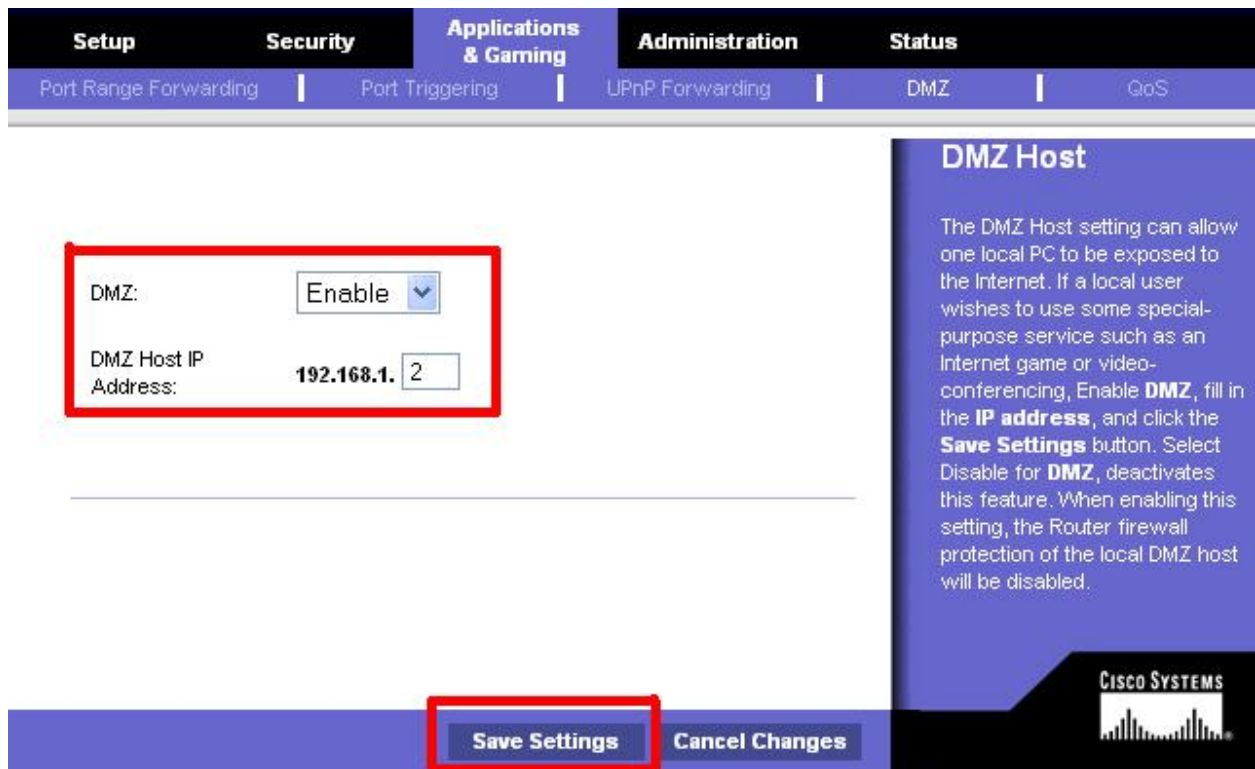
- 5.) Click on “Applications & Gaming”



6.) Click on “DMZ”



7.) Set DMZ to Enable and set DMZ Host IP Address to 192.168.1.2 *Be sure to click save!*



You should see this message after clicking Save Settings:

Settings are successful.

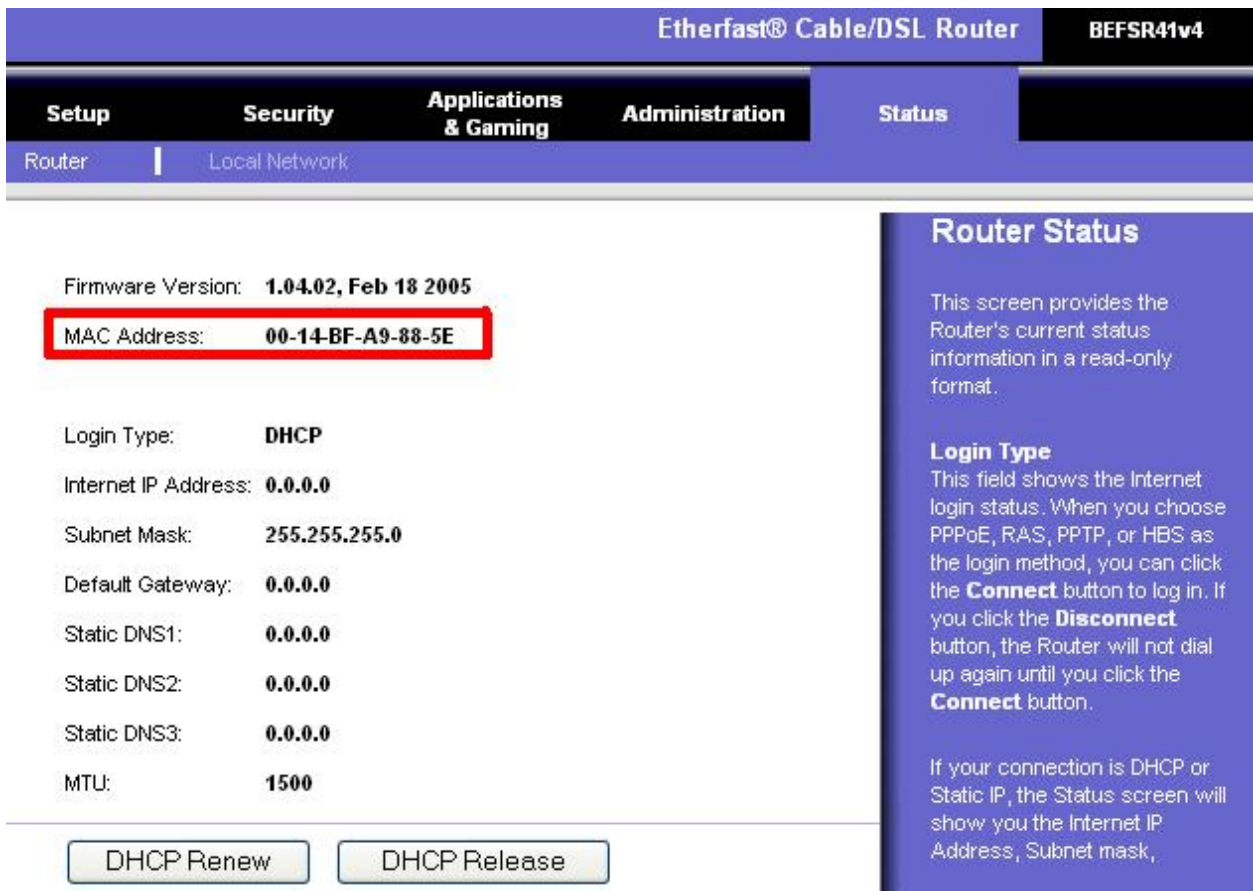
You will be returned to the previous page after 5 seconds.

8.) Click on “Status”



9.) Note the MAC address displayed on the screen and record it in your files. Be advised that this special MAC address is not the same as the “inbound” MAC address printed on the router itself.

Provide this MAC address to your Computing Consultant and request that “an entry in LUNET be made”



THE ROUTER SETUP IS NOW COMPLETE. ALL CABLES CAN BE UNPLUGGED AND THE ROUTER CAN NOW BE INSTALLED IN ITS PERMANENT LOCATION

Instructions for configuring your non-DCHP compliant device:

- 1.) Plug the device into jack #1 on the Linksys router.
- 2.) Connect the Lehigh LAN into the Linksys router port marked "Internet"
- 3.) Configure your device with the following settings in mind:
 - IP = 192.168.1.2
 - Mask = 255.255.255.0
 - Gateway = 192.168.1.1

The Linksys router will now use DHCP to get its IP address on Lehigh's network. It will translate all the IP packets and send them to and from the device.