

No. 2 • April 1997

Lehigh University  
Information Resources

# Special Collections *Flyer*

## Picturing Lehigh

Special Collections has long held photographs relating to the history of Lehigh University. In fact, the tally at the moment is over 14,000 images, mostly prints, but including slides – even a few glass lantern slides – and negatives. These images range from the late 19th century all the way up to the present day, and include a wide variety of not unexpected topics: sports teams and individuals, faculty and student portraits (no, we don't have a picture of every student and faculty member who was ever at Lehigh – we certainly wish we did), buildings, etc.

When we locate a photograph, and a copy is needed, we can arrange for photographic reproduction, or scan the image in-house in any of the standard formats. However, image files are large, and that's the main reason that Special Collections recently acquired the capacity to make CD-ROM disks. Such a disk is capable of holding

hundreds of image files in easily transportable form. One of the problems of making photographs accessible is that they often don't have just one subject. That photo of the 1899 Lehigh baseball team may include, for example, pictures of identified



WRESTLING TEAM, 1913

individuals of interest, or even the detail of a building in the background.

That's why we decided a number of years ago to forego trying to organize the photographs themselves for access, and instead rely on a database manager to

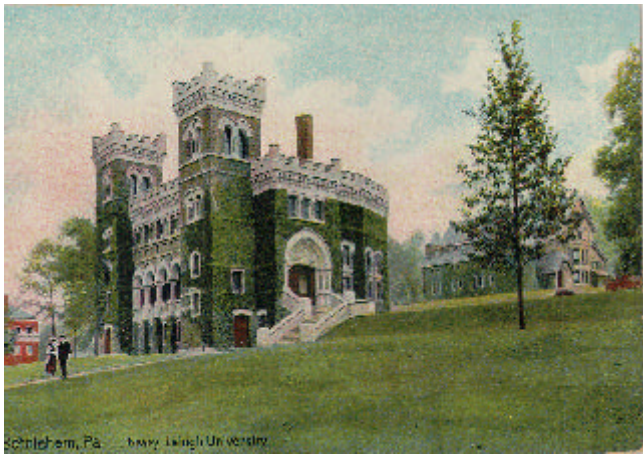


MUSTARD AND CHEESE DRAMA SOCIETY, 1895

do the job. The construction of this database took more than two years of daily work by Special Collections Assistant Marie Boltz. Now these images are easily accessible from a variety of approaches, and Mrs. Boltz is happy to present here some of her favorites from among them.

—P.A.M.

Published occasionally by Special Collections, Lehigh University Information Resources, Linderman Library, 30 Library Drive, Bethlehem, Pa. 18015-3067. To be placed on our mailing list, please write to the above address or send e-mail to [inspc@lehigh.edu](mailto:inspc@lehigh.edu). Copies are also available, in pdf and html file formats, at World Wide Web site <http://www.lib.lehigh.edu/spec.coll/spec.coll.html>. Your comments and suggestions are always appreciated.



LINDERMAN LIBRARY, POSTCARD CA. 1910



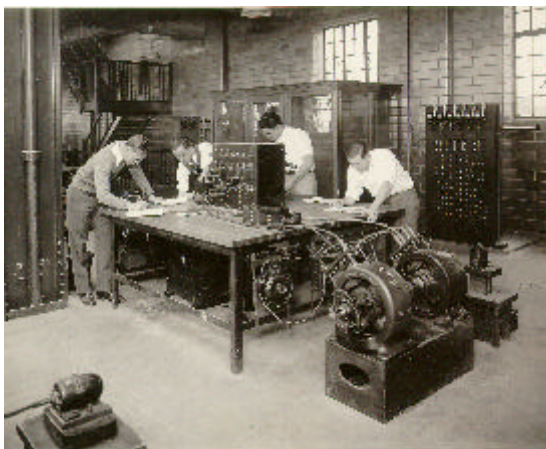
CHEMICAL LABORATORY, 1890



FIRST COEDS, 1971



STUDENTS, 1909



PACKARD LABORATORY, 1930



BASEBALL TEAM, 1899

*Lehigh Collection photographs are available for research without restriction. For further information contact Philip A. Metzger, Curator of Special Collections. Reading room hours are Monday through Friday, 1 p.m. to 5 p.m. or by appointment. Telephone: (610) 758-4506; fax (610) 974-6471; e-mail: [inspc@lehigh.edu](mailto:inspc@lehigh.edu).*