

No. 14 • September 2000

Lehigh University
Information Resources

Special Collections Flyer

The Other Darwin

The biologist and naturalist Charles Darwin (1809–1882) is known for the most part for three books: his youthful and seminal report on *The Voyage of the Beagle* (1839), and



From *The Variation of Animals and Plants under Domestication*

two towering works of modern science, *On the Origin of Species by Means of Natural Selection* (1858) and *The Descent of Man, and Selection in Relation to Sex* (1871).

First and other early editions of these works, as well as nearly everything else Darwin published,

including a proof copy of *On the Origin of Species* with corrections in his own hand, can be consulted in Special Collections.

Darwin was born into a leading English professional

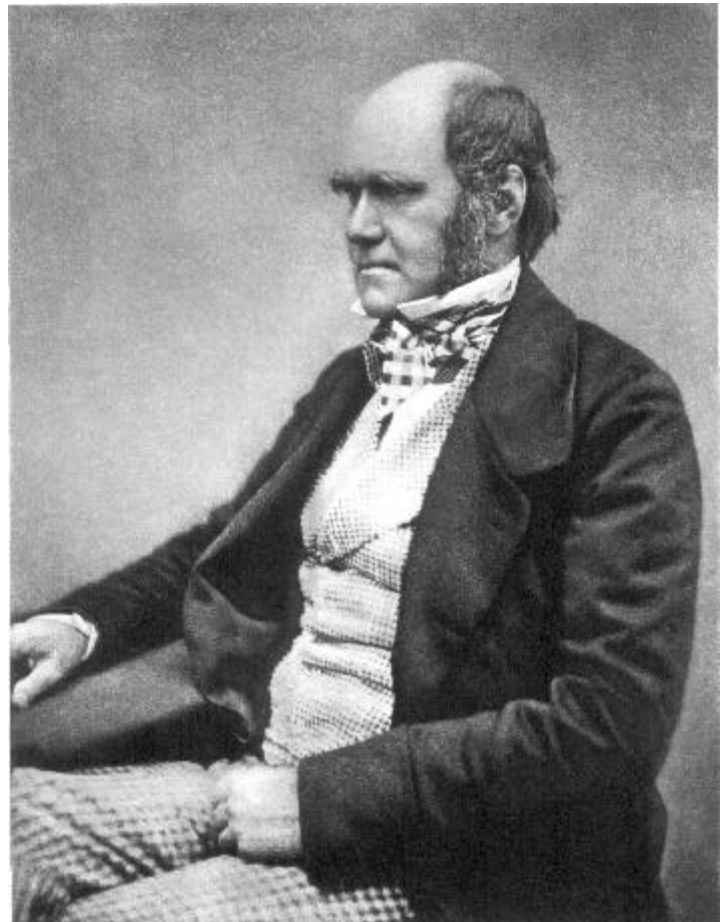
Published occasionally by Special Collections, Lehigh University Information Resources, Linderman Library, 30 Library Drive, Bethlehem, Pa. 18015-3067. To be placed on our mailing list, please write to the above address or send e-mail to inspc@lehigh.edu. Copies are also available, in pdf file format, at World Wide Web site www.lib.lehigh.edu/spec.coll/spec.coll.html. Your comments and suggestions are always appreciated.

upper-class family. Both his father and grandfather were physicians, and Darwin managed to disappoint the family by showing no interest in medicine.

Although a mediocre student, he evinced early on a keen interest in collecting natural specimens and in performing chemical experiments, activities which his public school teachers made every effort to discourage. Two years' study of medicine at the University of Edinburgh confirmed his dislike of the subject, although it brought him into contact with zoologist Robert Grant and geologist Robert Jameson, who encouraged his interest in natural science.

Sent to study divinity at the University of Cambridge, Darwin soon found himself a member of its circle of natural scientists. These experiences and contacts led, despite initial family objections, to his appointment in 1831 as a naturalist on board the *Beagle*. The rest, as they say, is history.

The prominence of his major works tends to obscure



Darwin in 1853

the fact that Darwin published many other books on a variety of topics in biology.

His earliest publication after the report on his

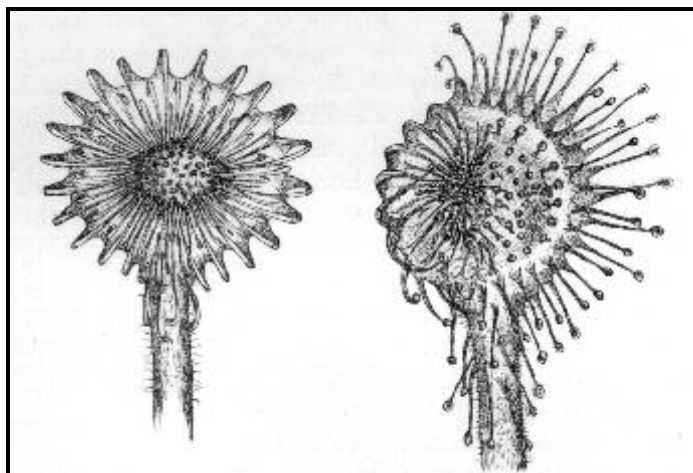
experiences as scientific member of the *Beagle* expedition appeared as *The Structure and Distribution of Coral Reefs* (1842). Many other titles followed: *A Monograph on the Fossil Lepadidae, or Pedunculated Cirripedes of Great Britain* (1851), *On the Various Contrivances by Which British and Foreign Orchids Are Fertilised by Insects, and On the Good Effects of Intercrossing* (1862), *The Variation of Animals and Plants Under Domestication* (1868), *The Expression of Emotion in Man and Animals* (1872), *Insectivorous Plants* (1875), *The Effects of Cross and Self Fertilisation in the Vegetable Kingdom* (1876), *The Different Forms of Flowers on Plants of the Same Species* (1877), *The Power of Movement in Plants* (1880), and *The Formation of Vegetable Mould, Through Action of Worms, with Observations on Their Habits* (1881). In addition, he published numerous articles in the scientific journals of the day.

- P.A.M.

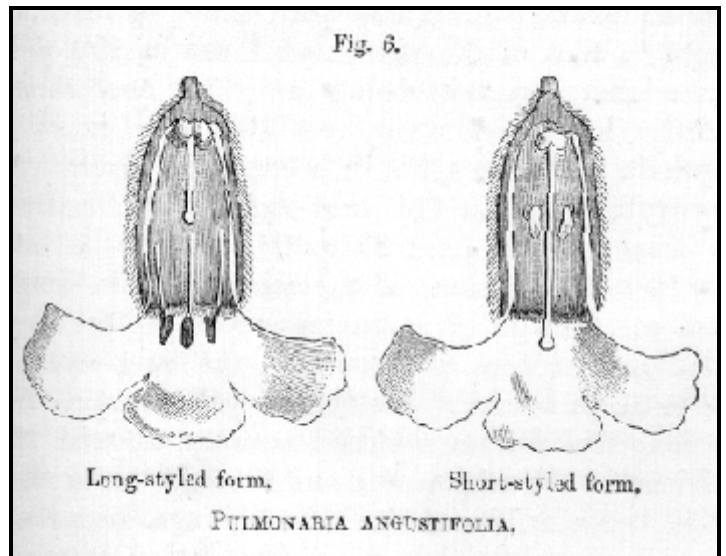
• • •

Please welcome Ilhan Citak, who became Special Collections Assistant after Marie Boltz retired last spring. Ilhan is a native of Turkey, and has been a resident of the United States for about five years. He is a graduate of Ege University in Izmir, Turkey, where he studied Turkish literature and philology. He has a strong interest in, and knowledge of, history and literature, as well as all things relating to books and libraries. Ilhan worked for about a year in the Library Materials Center at Lehigh before taking this position. His wife teaches art in the Bethlehem School District; the Citaks have a five-year-old son. Ilhan looks forward to greeting and assisting old and new readers in Special Collections.

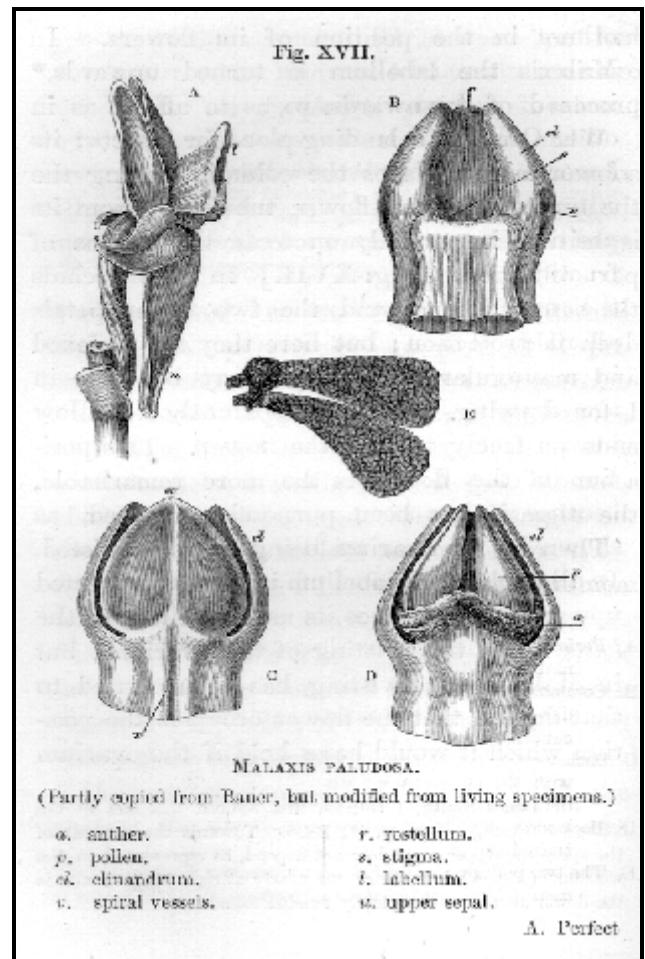
ÉÉÉÉÉÉÉÉÉÉÉÉÉÉÉÉÉÉÉÉÉÉÉÉÉÉÉÉÉÉ
 ÉÉ



From *Insectivorous Plants*



From *The Different Forms of Flowers on Plants of the Same Species*



From *The Fertilization of Orchids*

Special Collections materials are available for research and consultation without restriction. For further information contact Philip A. Metzger, Curator of Special Collections, or Ilhan

Citak, Special Collections Assistant. Reading room hours are Monday through Friday, 1 p.m. to 5 p.m. or by appointment. Telephone: (610) 758-4506; fax (610) 758-6091; e-mail: inspc@lehigh.edu