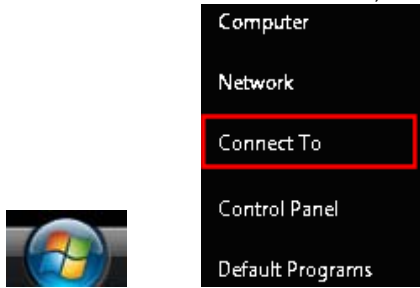
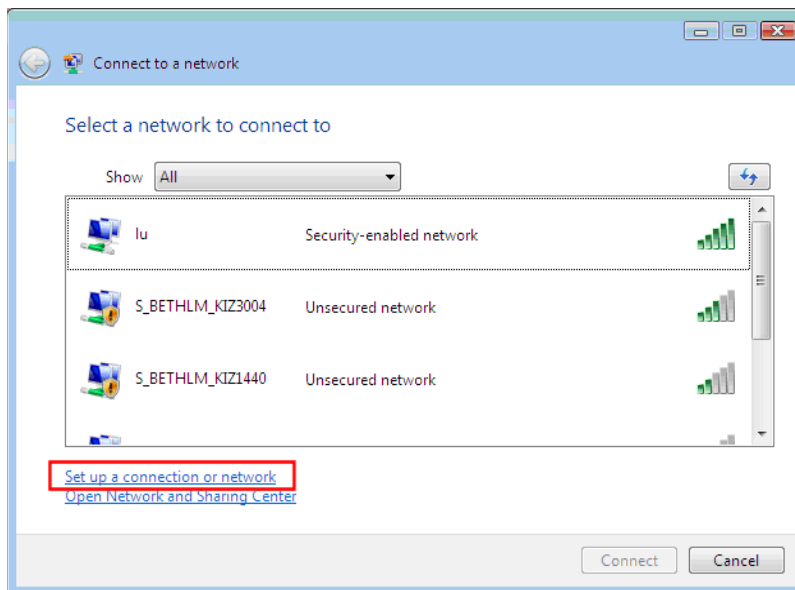


Vista Wireless connections to LU

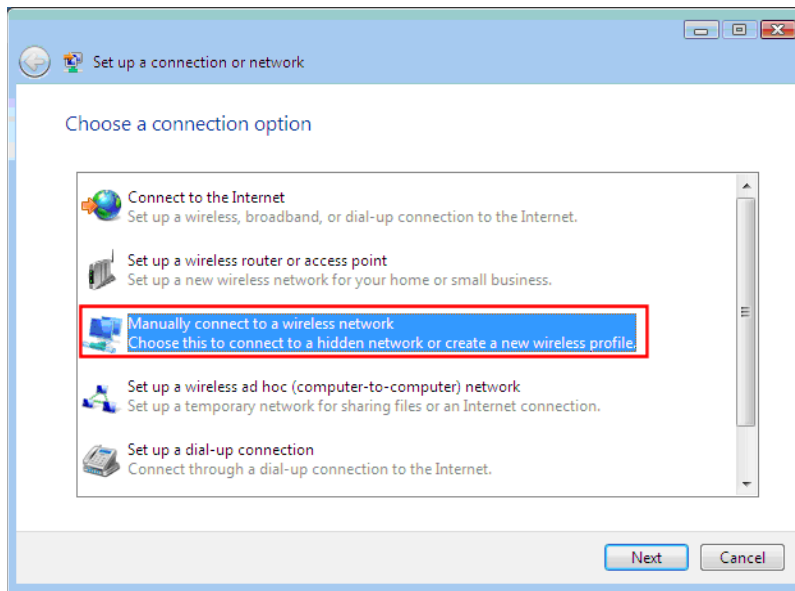
- 1) Click the Windows Start Button, and from the options listed, choose “**Connect To**”



- 2) On the Connect to a network window, choose: **Set up a connection or network.**
NOTE: You may or may not see the lu and/or other wireless networks listed for the area you are located.

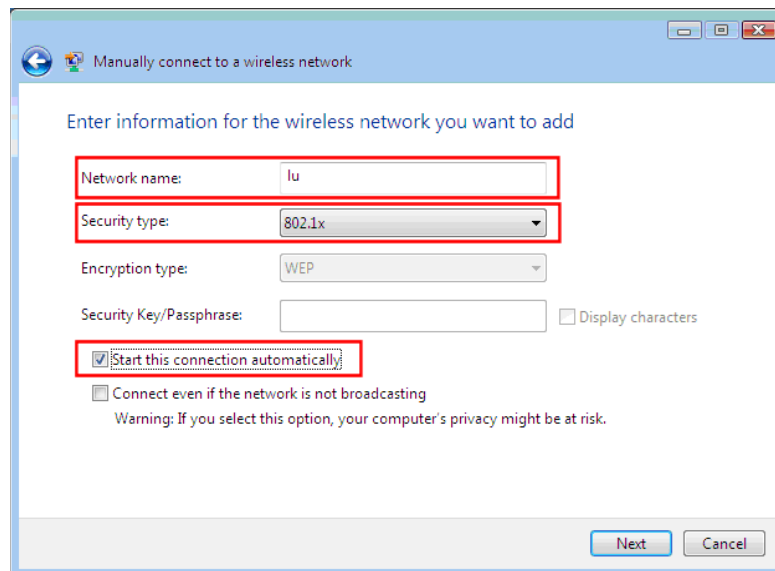


- 3) On the Set up a connection or network window, choose: “**Manually connect to a wireless network**”, then click **Next**

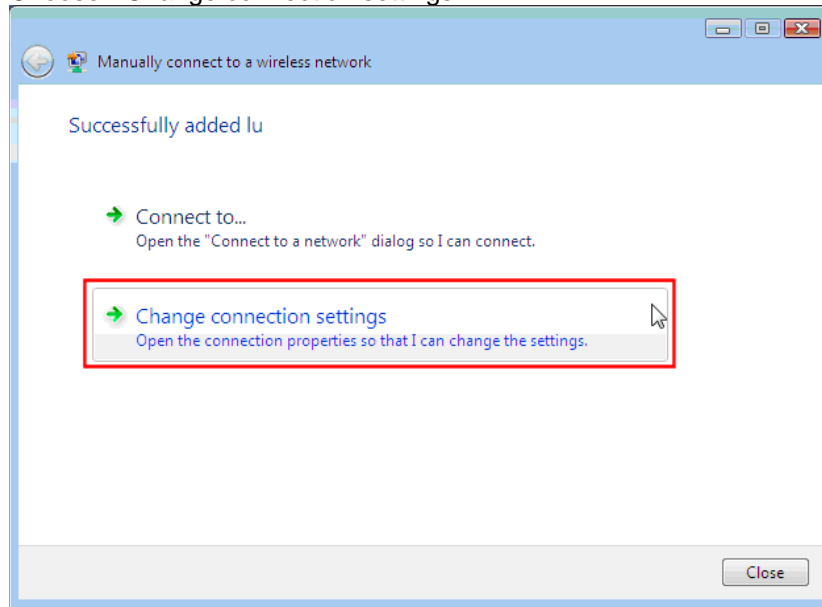


- 4) Complete the form by selecting the following options:
- Network name: **lu**
 - Security Type: **802.1x**
 - Check box for **Start this Connection Automatically**

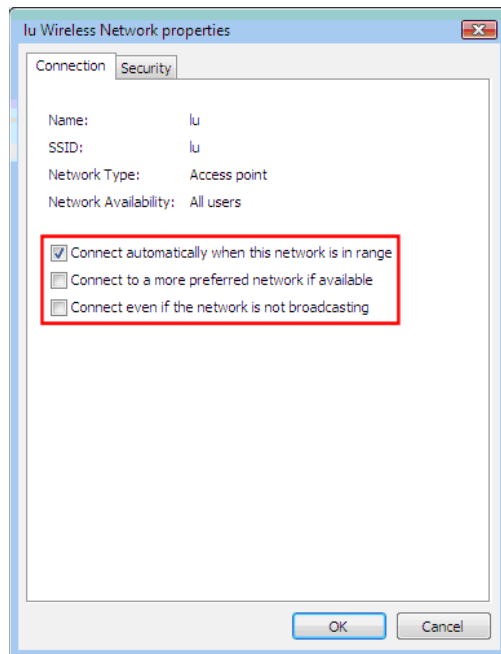
Click **NEXT**



5) Choose: "Change connection settings"



6) On the lu Wireless Network properties window, choose the Connection tab and be sure to check the box for **Connect automatically when this computer is in range**. Uncheck the boxes for "Connect to a more preferred network if available" and "Connect even if the network is not broadcasting".



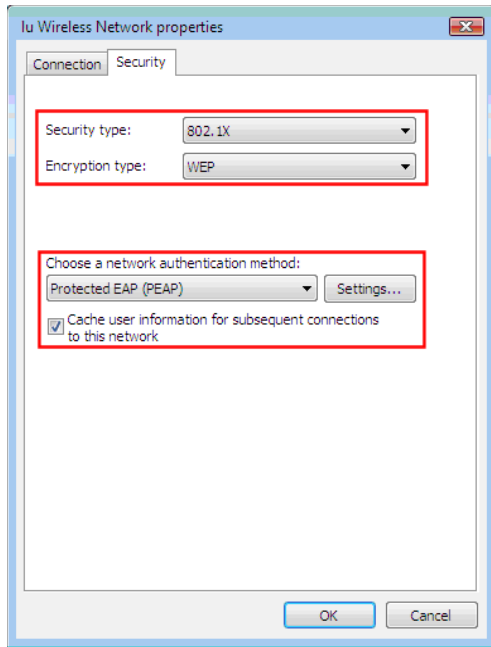
Choose the Security tab. Verify the options as below:

Security type: 802.1x

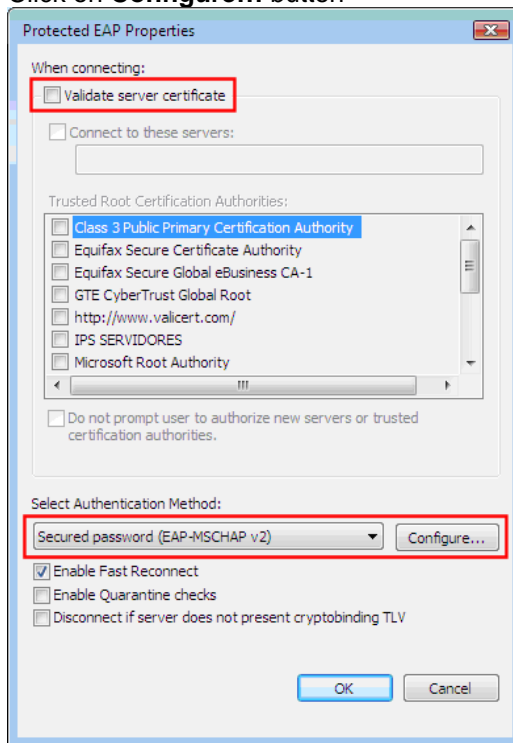
Encryption type: WEP

Authentication method: Protected EAP (PEAP)

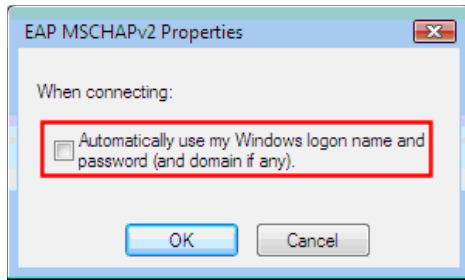
Check the box for Cache user information for subsequent connections to this network.



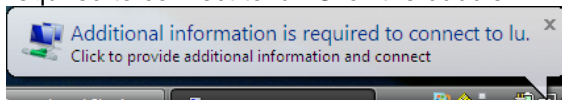
- 7) Click on **Settings ...** behind Protected EAP (PEAP)
- 8) On the Protected EAP Properties window,
 - a. Uncheck **Validate Server Certificate**
 - b. Verify the Authentication method is **Secured password (EAP-MSCHAP v2)**
 - c. Click on **Configure...** button



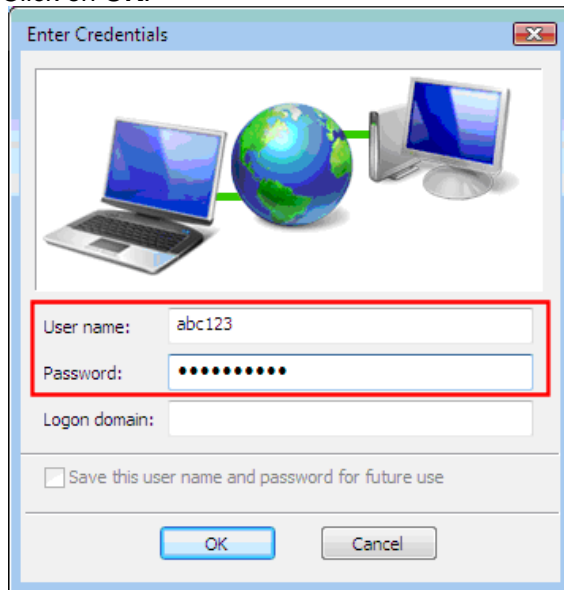
- 9) Uncheck the option **Automatically use my Windows logon name and password (and domain if any)**, then click on **OK** to accept your changes.



- 10) On the Protected EAP Properties window, click on **OK** to accept the settings and close the window.
- 11) On the lu Wireless Network Properties window, click on **OK** to accept the settings and close the window.
- 12) A pop-up bubble should be displayed on your task bar indicating additional information is required to connect to lu. Click the bubble.

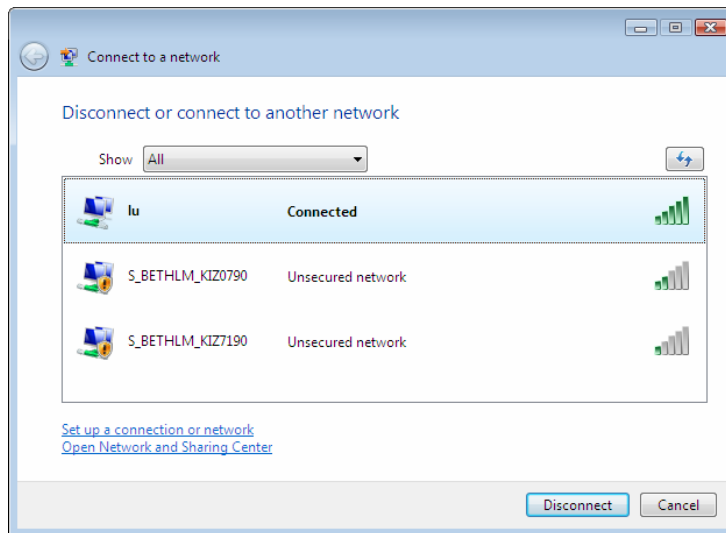


- 13) Enter your Lehigh **UserID** and **Password**. Leave the field for Logon Domain blank. Click on **OK**.



NOTE: You may receive a verisign Trust Network certificate warning .. if so, select **OK**.

14) In a moment, you should be connected to the lu wireless network.



You should also now see the connected to internet icon in the lower right corner of Windows.



15) Close any remaining open network connections dialog windows.