

Financial Service Laboratory

ThomsonOne: Lesson 001

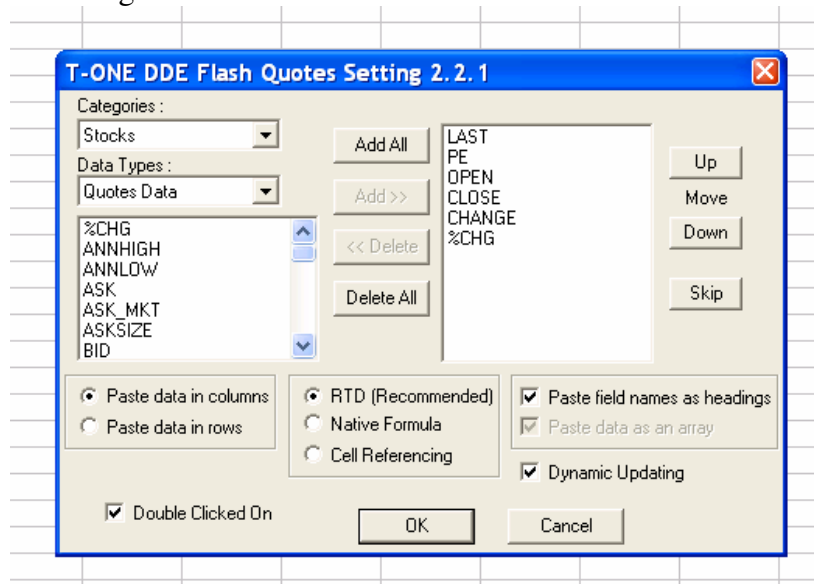
Designed by: Adam Perry
Topic: Using Live Stock Quotes in Excel

Description:

Students are to use the T-ONE feature in Microsoft Excel to embed live quotes in a spreadsheet in order to monitor a portfolio.

Step 1: Run the Thomson ONE program, this must be running to use the Microsoft Excel plug-in. Once Thomson is loaded, run Excel.

Step 2: Under the T-ONE menu select “Flash Quote.” Select the data headings from the list on the left and add them to the list on the right. This list makes up the field names that will be used. Make sure the “Paste field names as headings box” is checked. Your screen should look something like this. Click OK.



In cell ‘A2’ enter your first ticker symbol (e.g. AAPL). Double Click on the cell with the symbol in it. Your headings should appear with the applicable data for your stock below them.

Re-open the “Flash Quote” settings box from the T-ONE menu; **uncheck** the “Paste field names as headings” box. Click OK. Below your first ticker symbol, proceed to enter as many quotes as you like, staying in column “A” and moving down. Double click each to populate the fields.

Step 3: Now that you have the data for the stocks in your portfolio you can input user-defined data and use formulas in order to monitor your portfolio. You should create columns to input your purchase price and the number of shares being held. This way you can create formulas to monitor statistics such as gain/loss and value.

	A	B	C	D	E	F	G	H	I	J	K	L	M	N
1												Gain/Loss		
2	Ticker Symbol	LAST	PE	OPEN	CLOSE	CHANGE	%CHG	Shares held	Purchase Price	Value	Initial Value	\$	%	
3	aapl	55.29	77.87	54.95	54.75	0.54	0.99	100	\$ 30.00	\$ 5,529.00	\$ 3,000.00	\$ 2,529.00	84.30%	
4	cscoc	18.72	27.53	18.5	18.44	0.28	1.52	100	\$ 22.00	\$ 1,872.00	\$ 2,200.00	\$ (328.00)	-14.91%	
5	yhoo	37.79	99.45	36.87	36.66	1.13	3.08	100	\$ 32.00	\$ 3,779.00	\$ 3,200.00	\$ 579.00	18.09%	
6	orcl	13.12	24.75	13.23	13.38	-0.26	-1.94	115	\$ 16.00	\$ 1,508.80	\$ 1,840.00	\$ (331.20)	-18.00%	
7	Dell	37.21	32.64	36.99	36.85	0.36	0.98	105	\$ 29.00	\$ 3,907.05	\$ 3,045.00	\$ 862.05	28.31%	
8	goog	182	#N/A	169.13	167.86	14.14	8.42	50	\$ 85.00	\$ 9,100.00	\$ 4,250.00	\$ 4,850.00	114.12%	
9										\$25,695.85	\$17,535.00	\$ 8,160.85	46.54%	
10														

In this example I am only monitoring the value, initial value, and gain/loss. Depending on the original data headings selected you can use more formulas to monitor the portfolio. The results of the formulas will update as the data from T-ONE updates.

I created a graph to view the portfolio by weight; this can be done the same way as creating any other chart in Excel.

