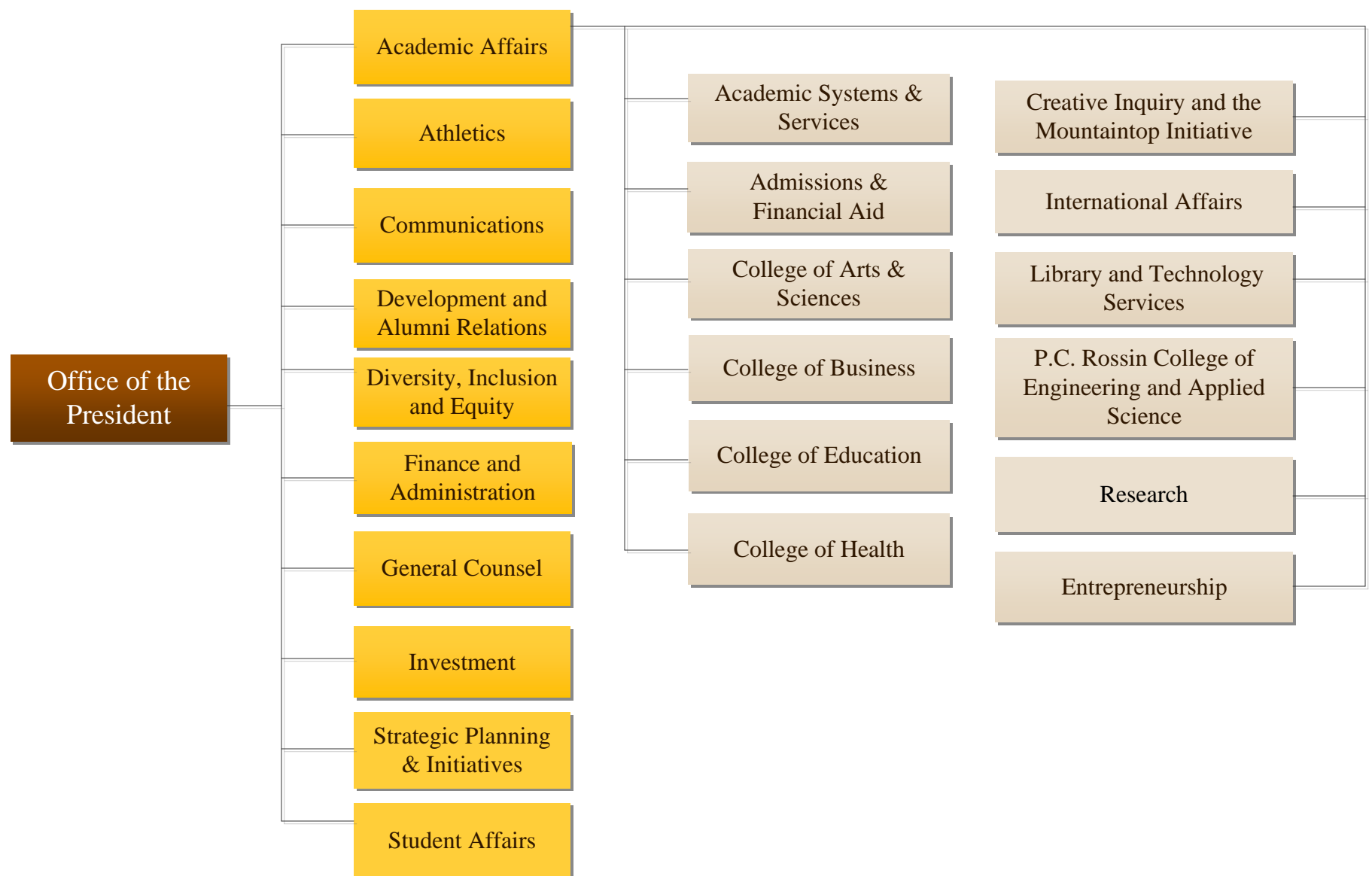


Lehigh University Organization Chart



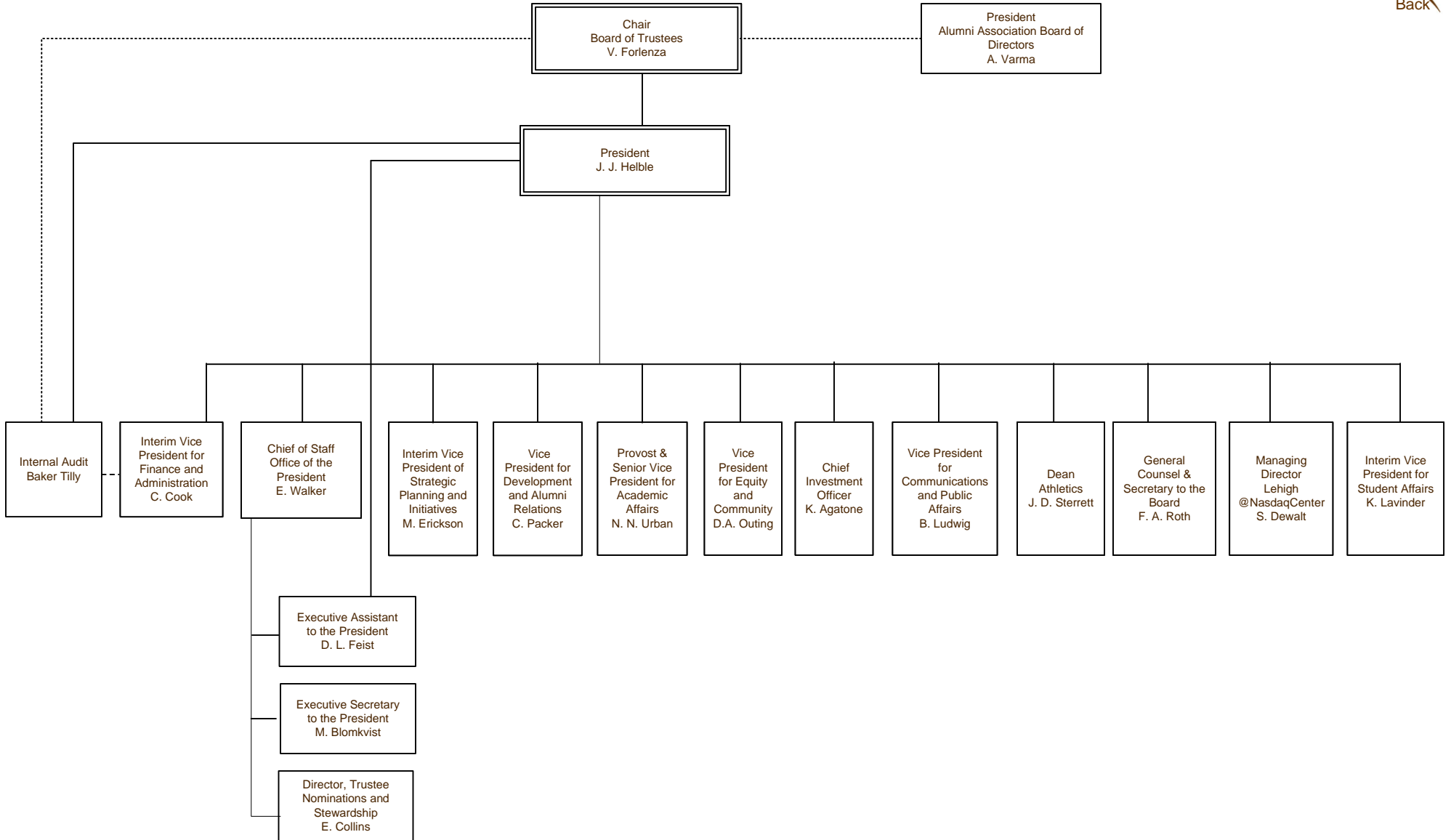


Organization Chart

President's Office

Last Update:

July 8, 2024



..... Indicates dual reporting line

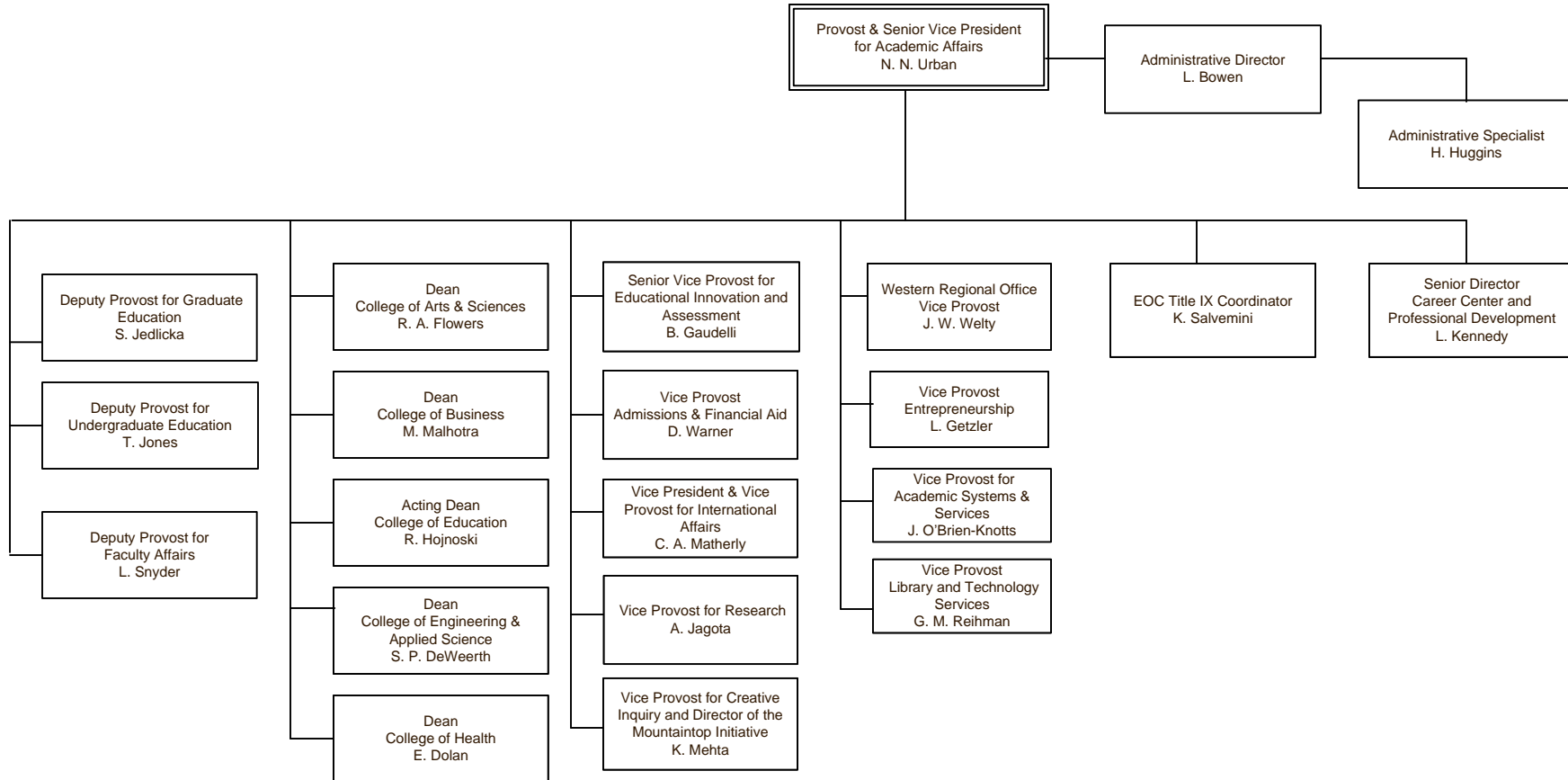
———— Indicates direct report



Organization Chart

Last Update:
August 2, 2023

Provost & Senior VP of Academic Affairs

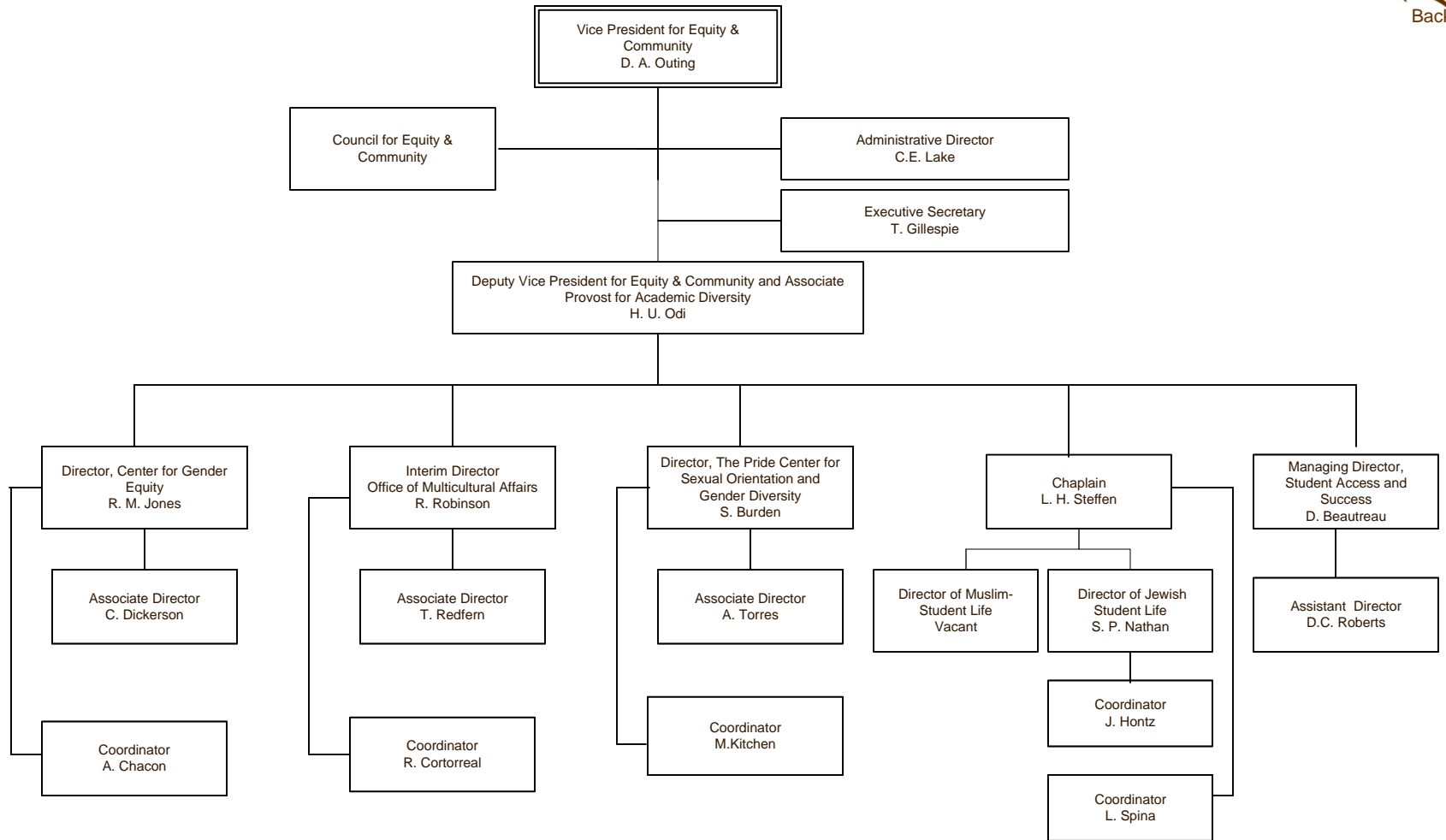


..... Indicates dual reporting line

———— Indicates direct report

Organization Chart

Office of Diversity, Inclusion and Equity



..... Indicates dual reporting line

———— Indicates direct report

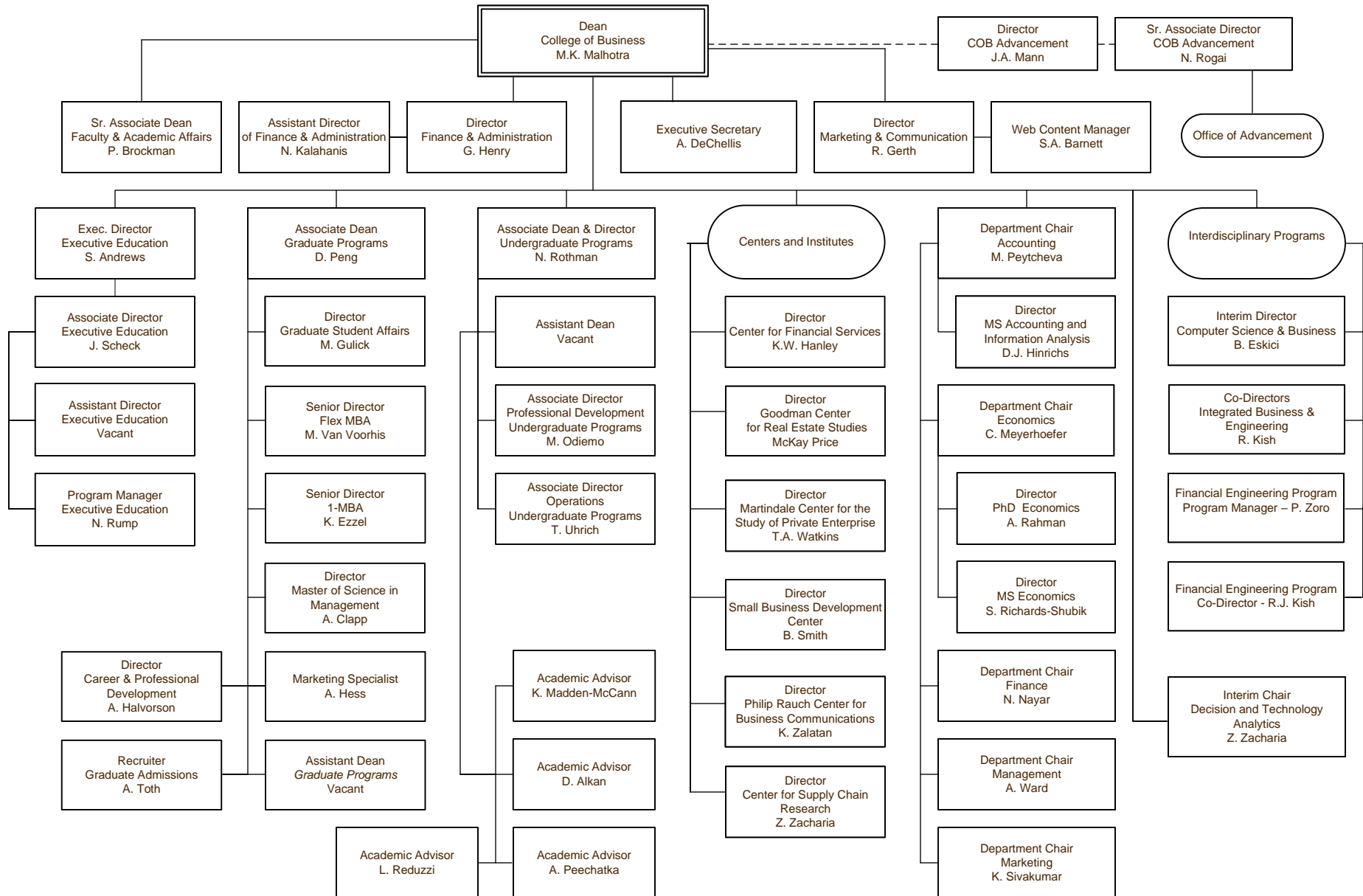


Organization Chart

College of Business

Last Update:
August 13, 2024

[Back](#)



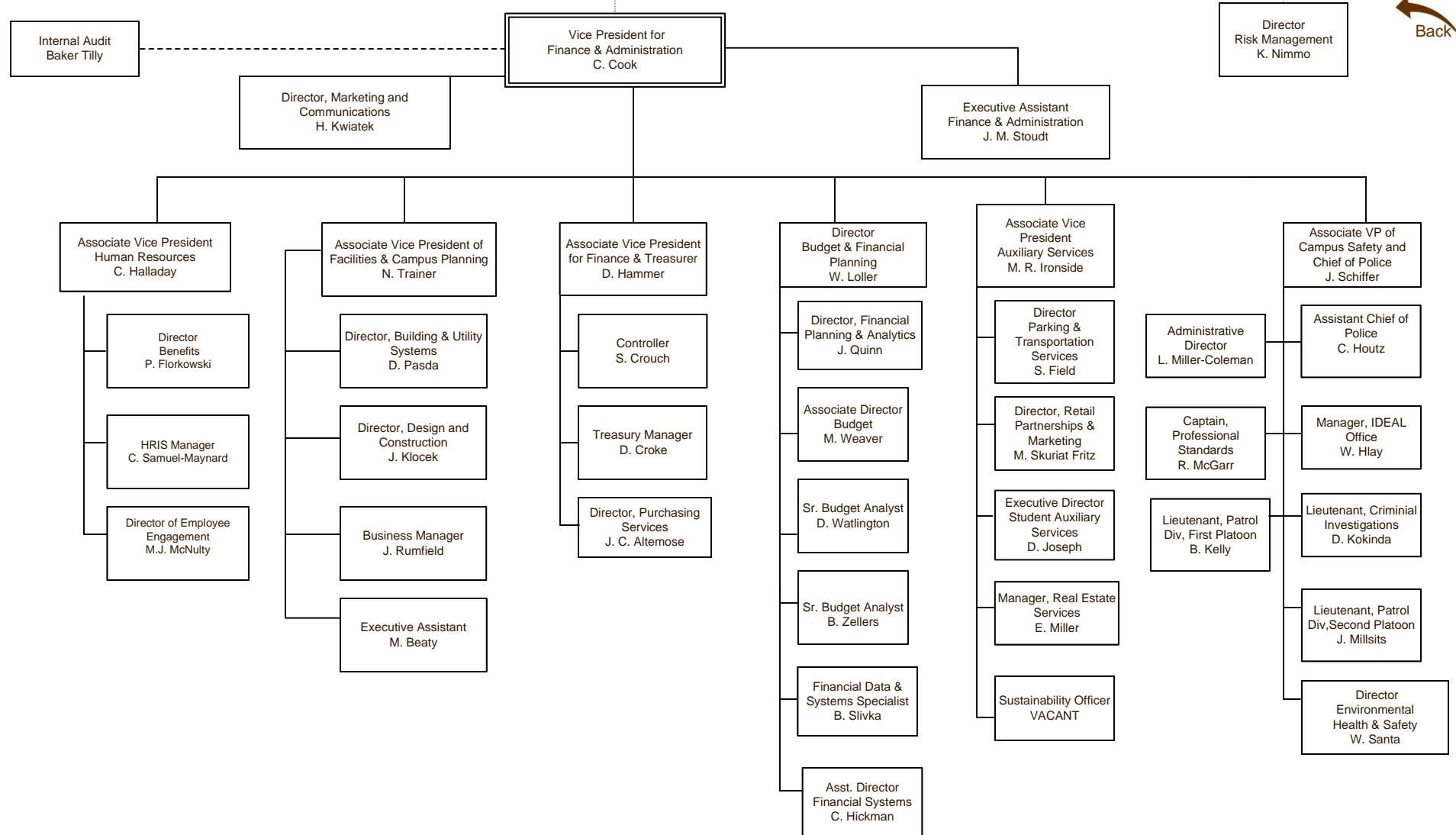
..... Indicates dual reporting line
 _____ Indicates direct report



Organization Chart

Finance & Administration

Last Update:
May 8, 2025



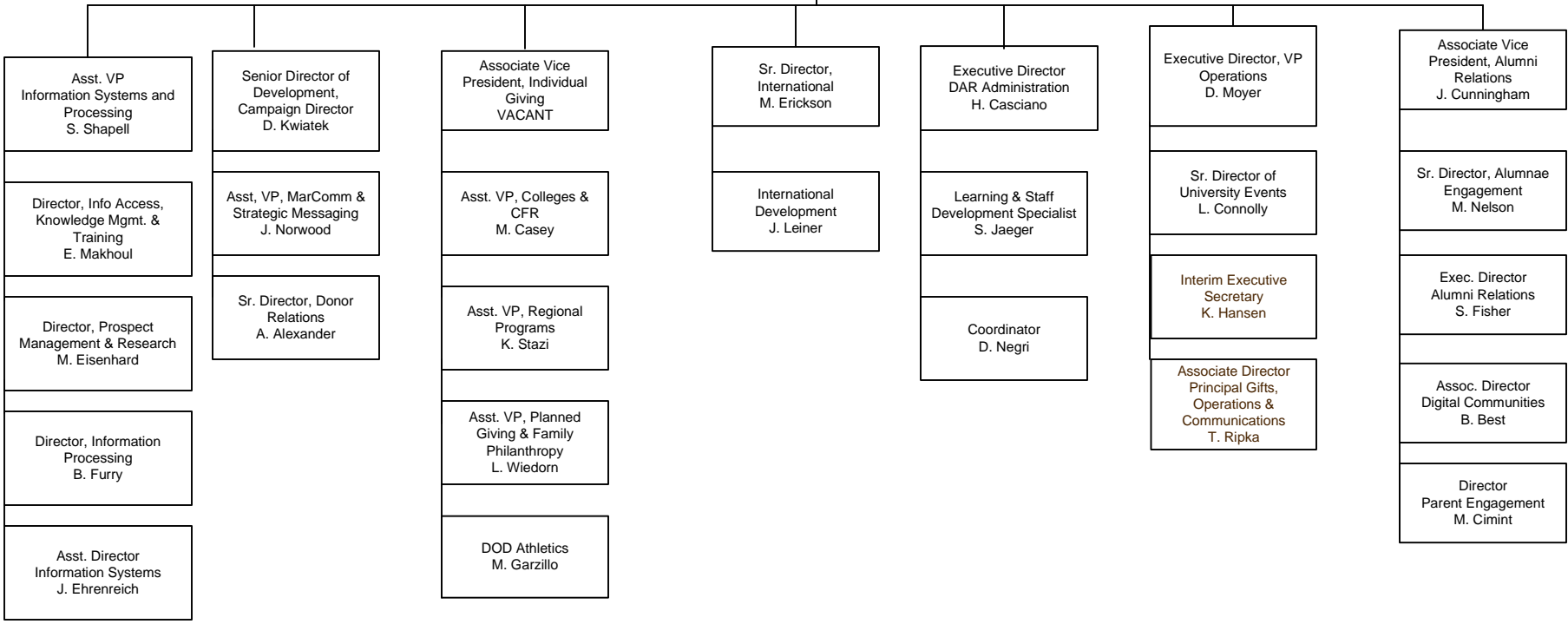
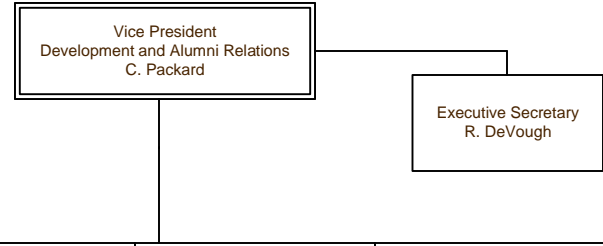
----- Indicates dual reporting line with another stem
 _____ Indicates direct report



Organization Chart

Development and Alumni Relations

Last Update:
August 1, 2024



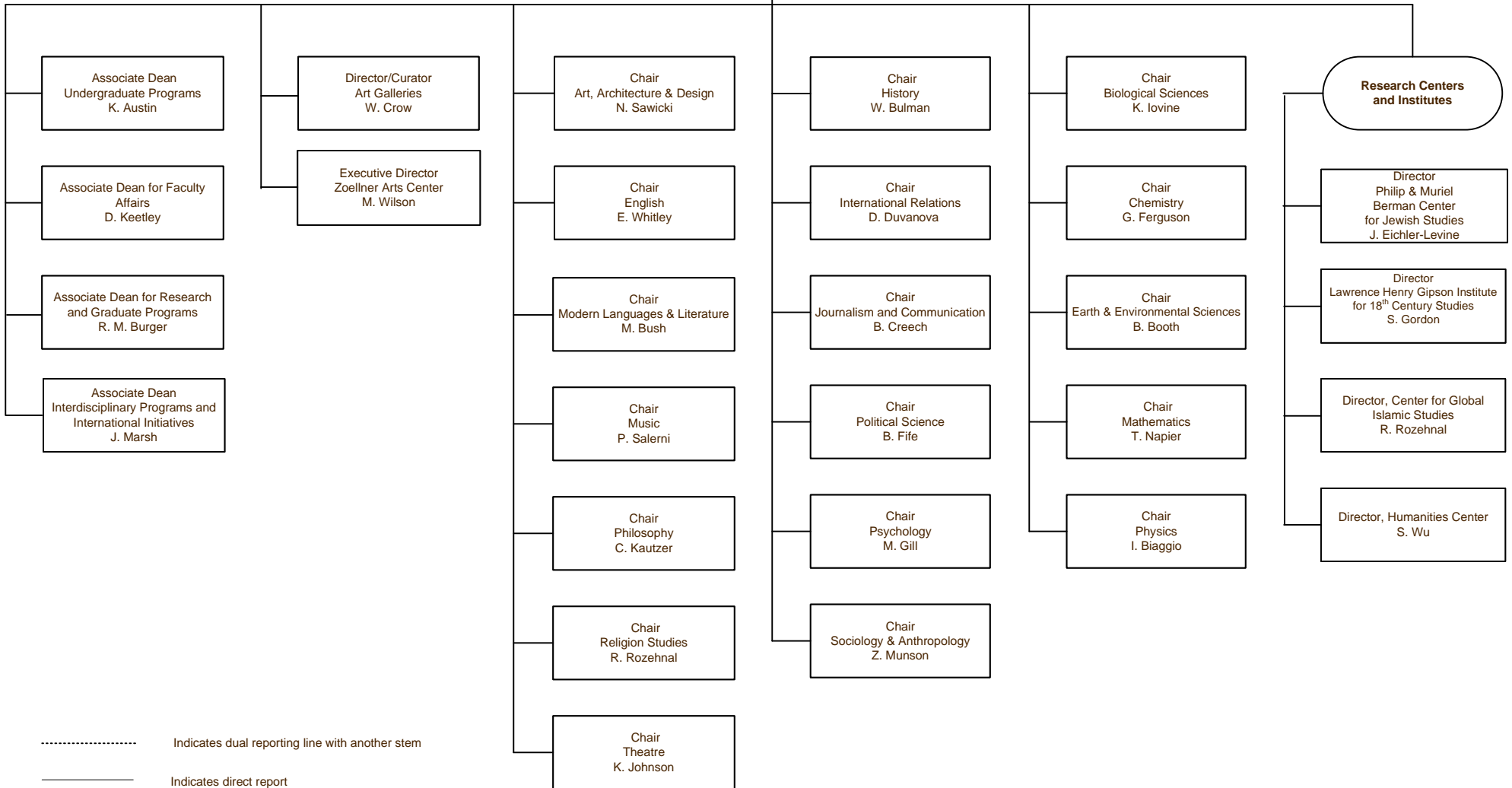
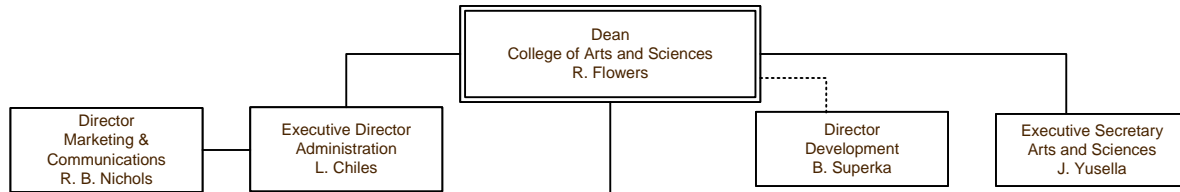
— Indicates direct report



Organization Chart

College of Arts & Sciences

Last Update:
August 5, 2024



..... Indicates dual reporting line with another stem
 ————— Indicates direct report

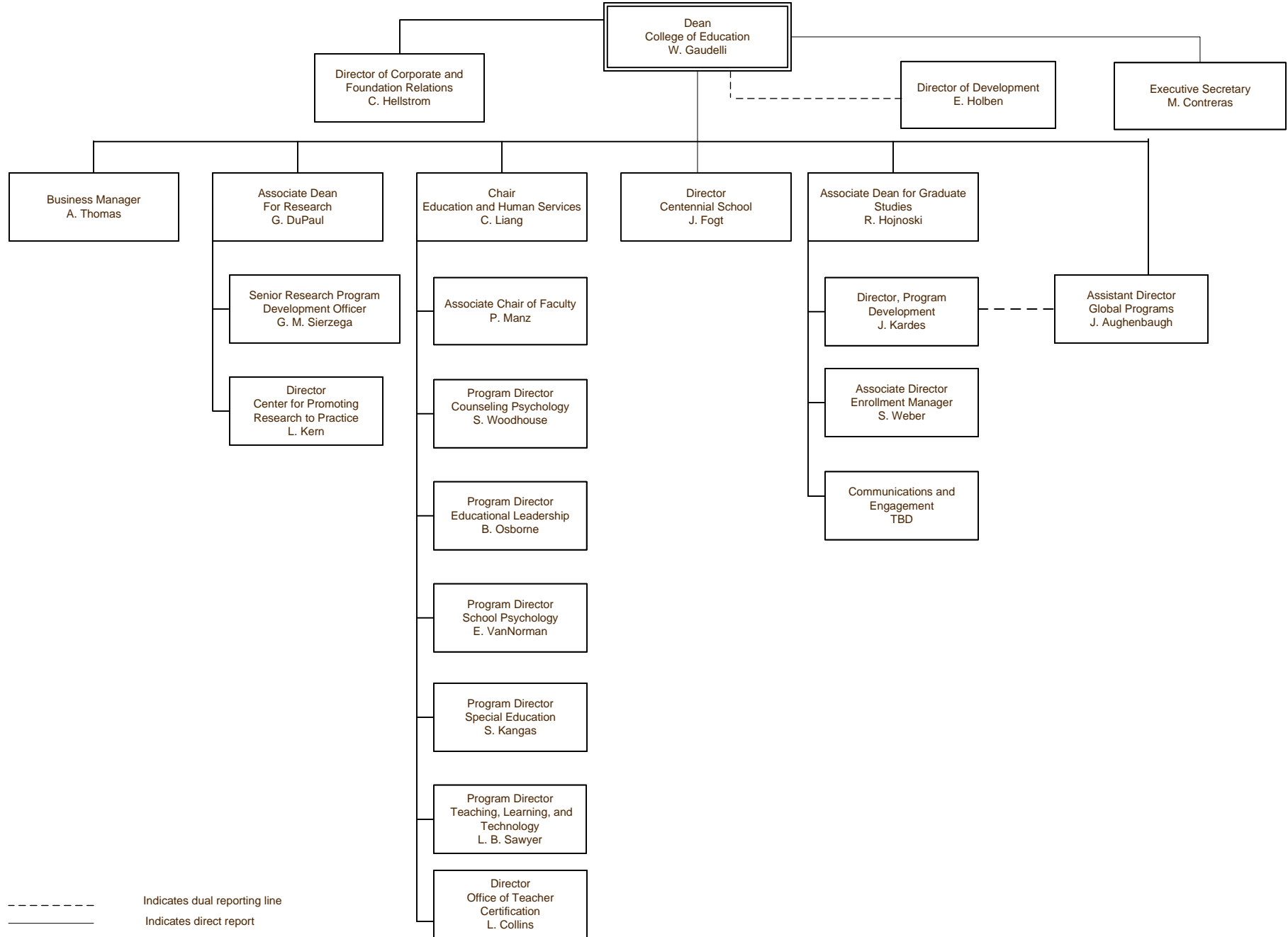


Organization Chart

Last Update:

September 27, 2023

College of Education



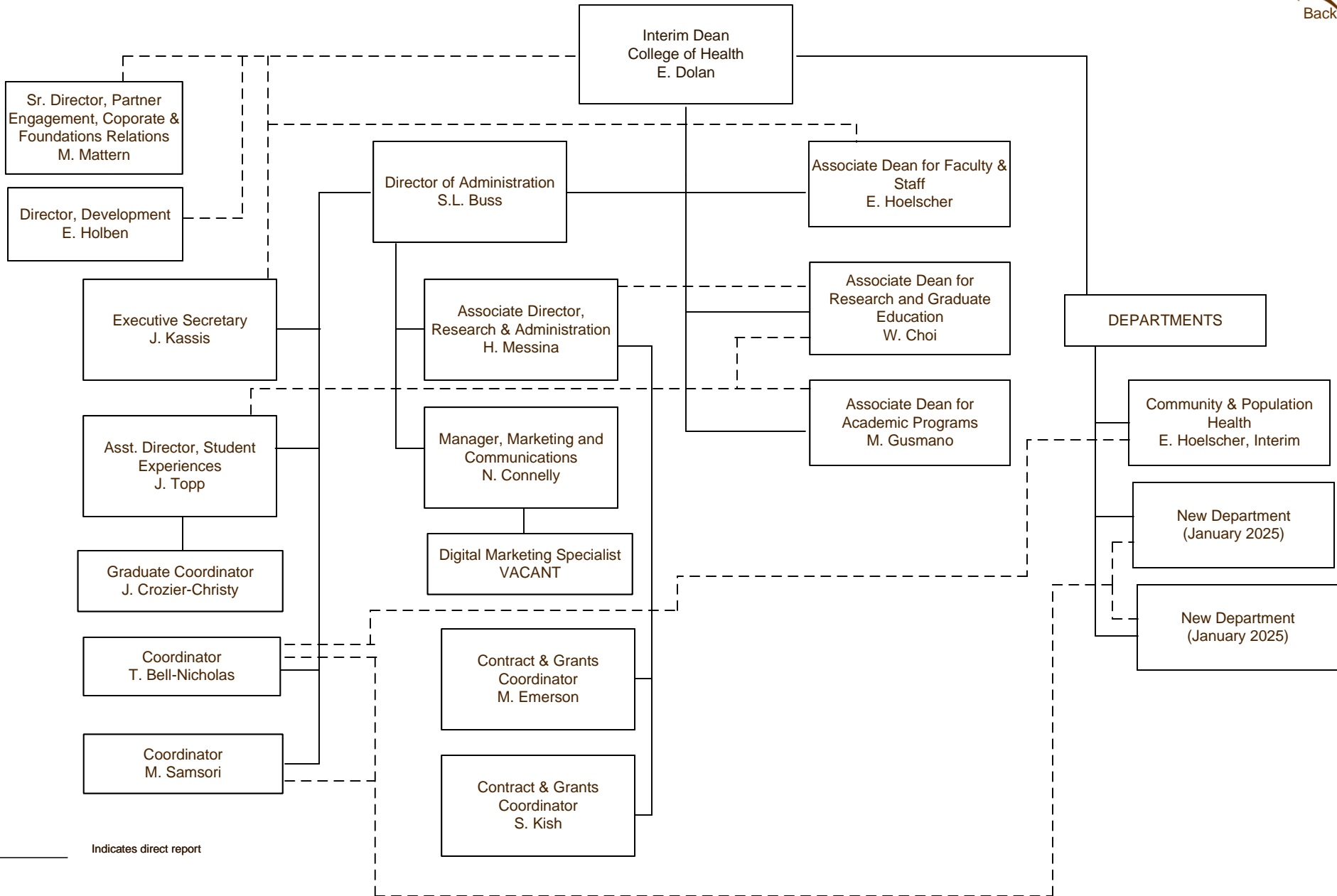
----- Indicates dual reporting line
 _____ Indicates direct report

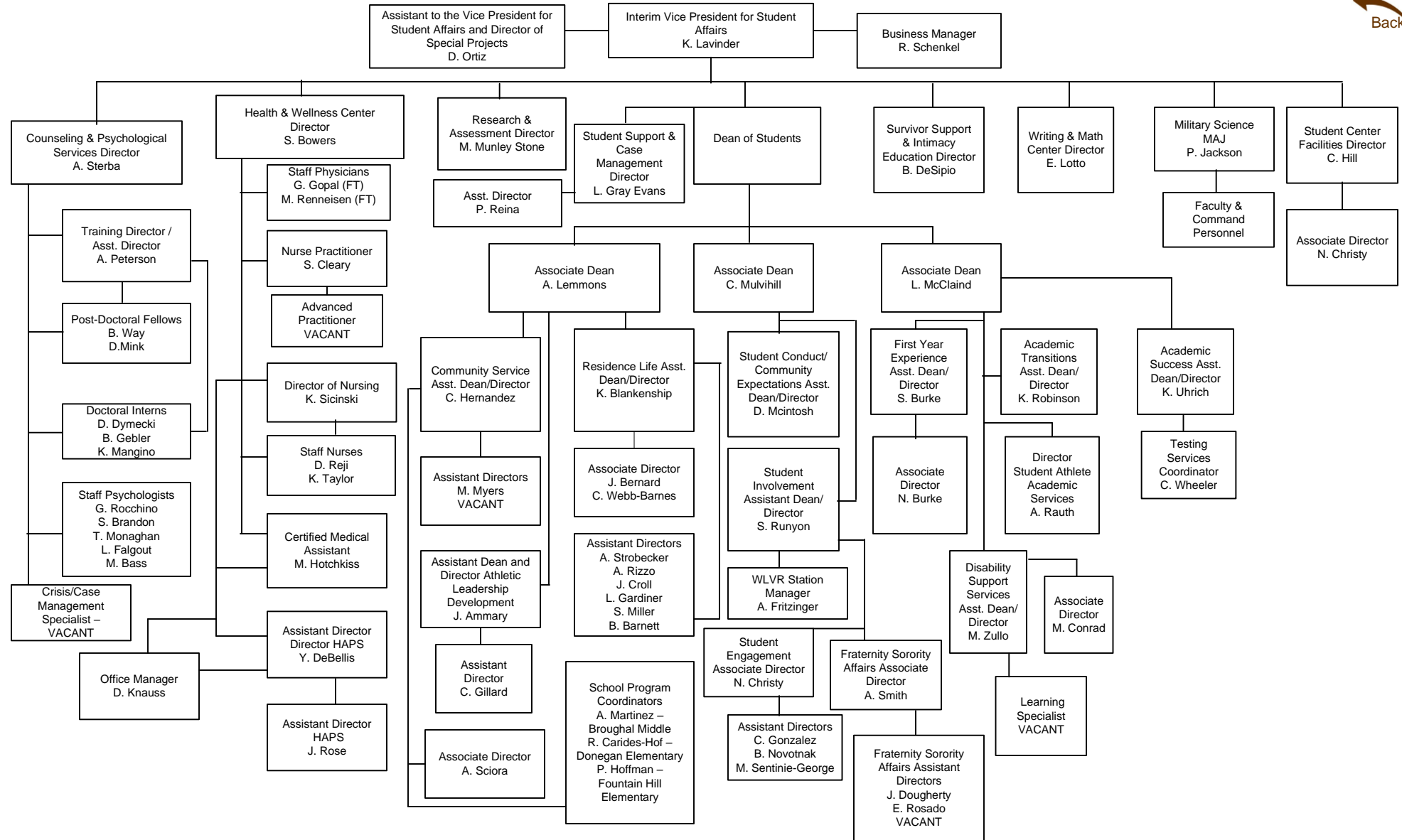


Organization Chart

College of Health

Last Update:
August 6, 2024





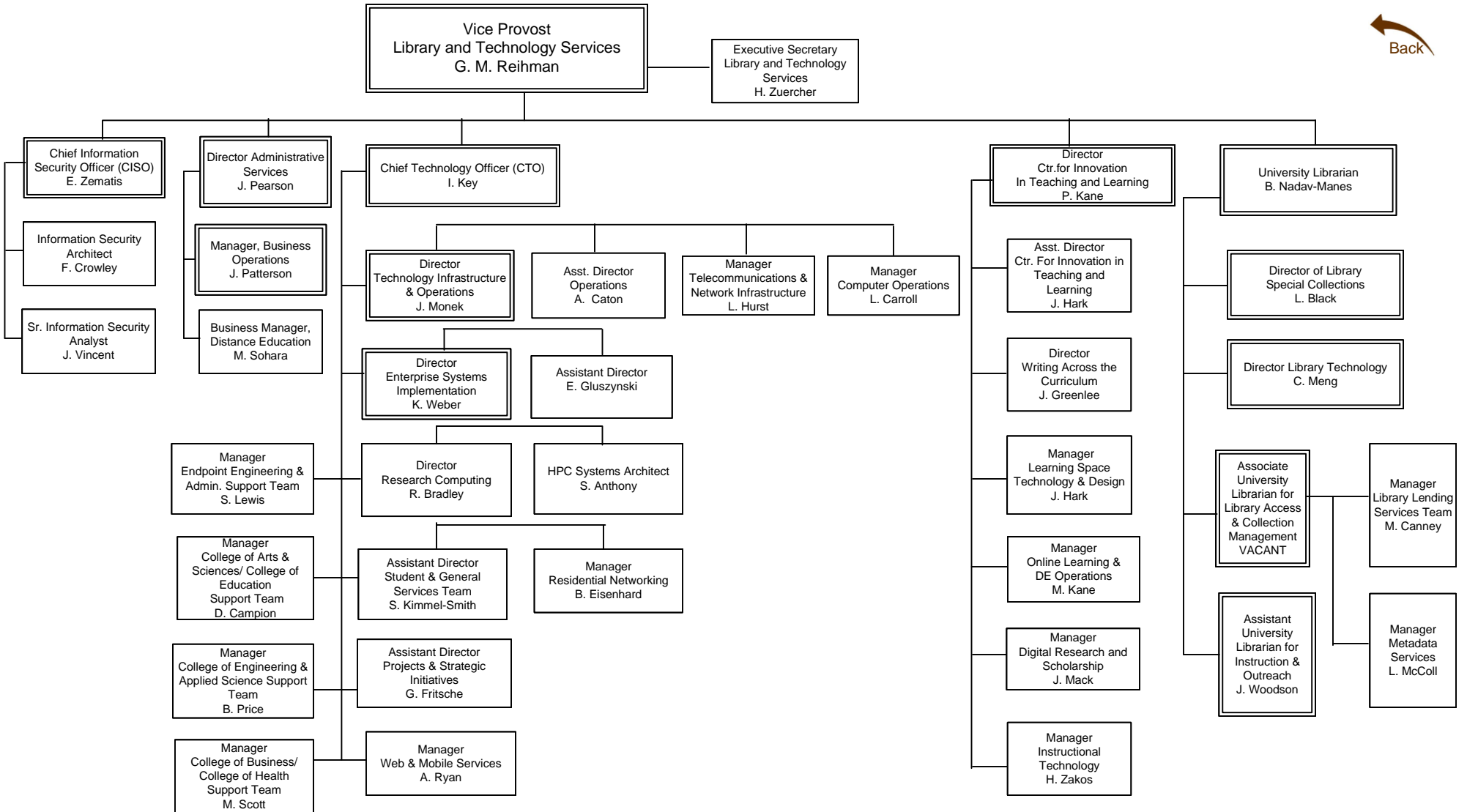
— Indicates direct report



Organization Chart

Library & Technology Services

Last Update:
February 9, 2024



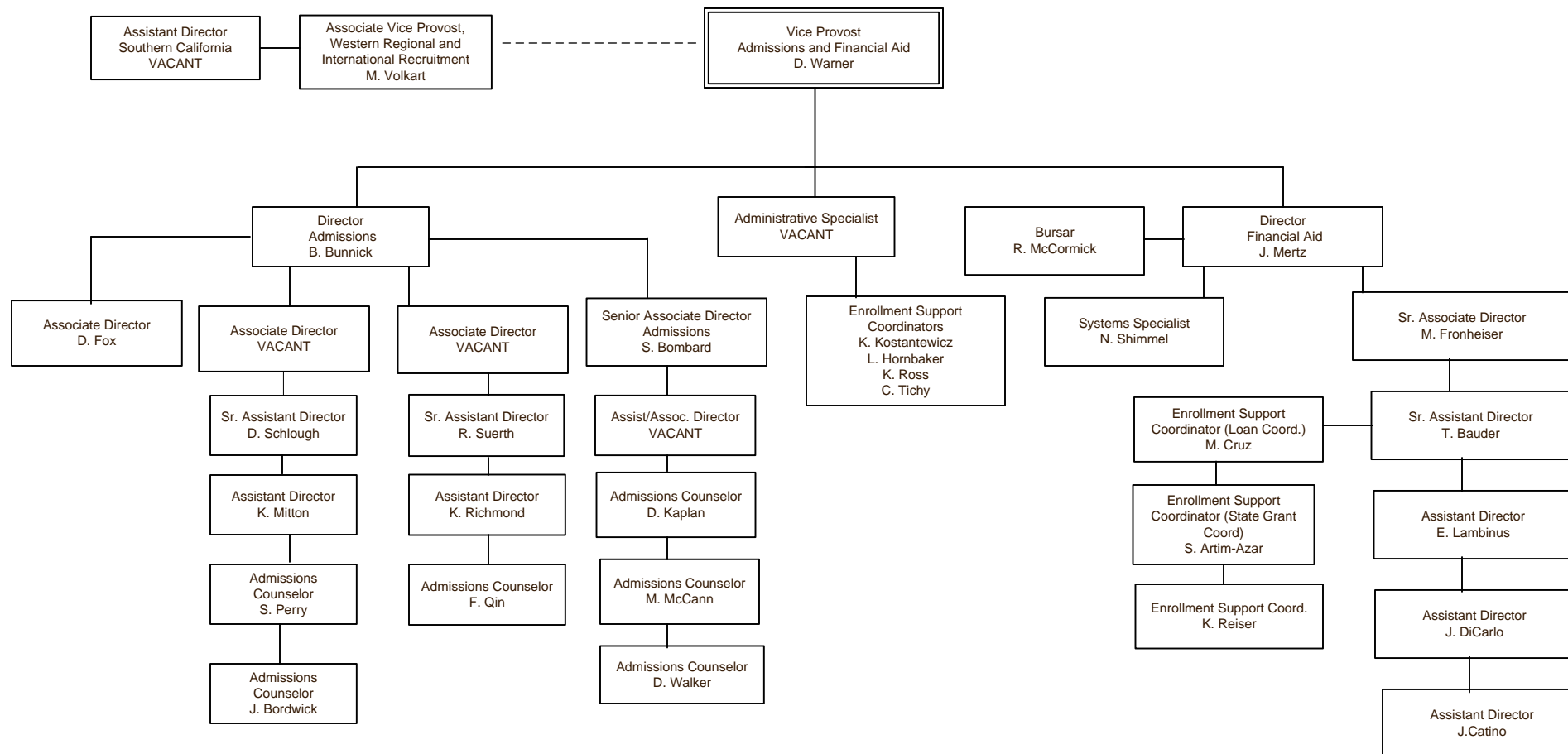
————— Indicates direct report
- - - - - Indicates dual reporting line



Organization Chart

Admissions & Financial Aid

Last Update:
October 11, 2024



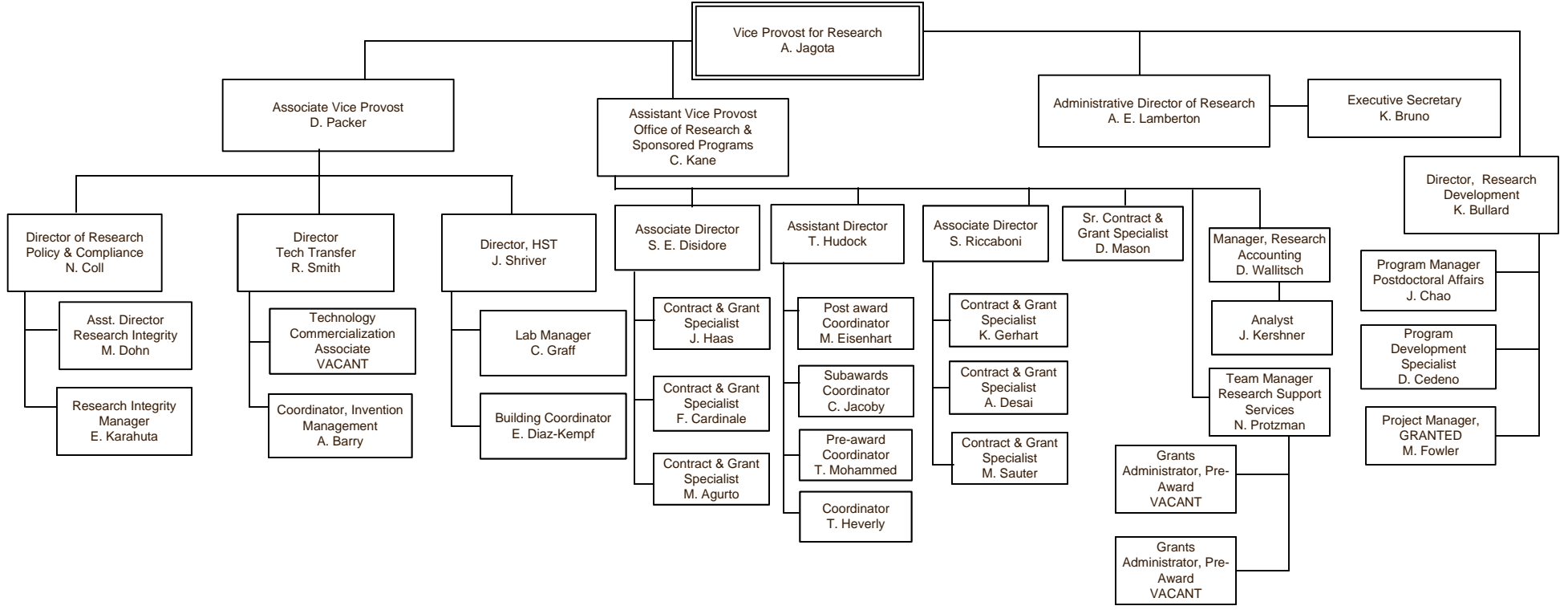
————— Indicates direct report



Organization Chart

Office of the Vice Provost for Research

Last Update:
October 22, 2024



----- Indicates dual reporting line with another stem

————— Indicates direct report

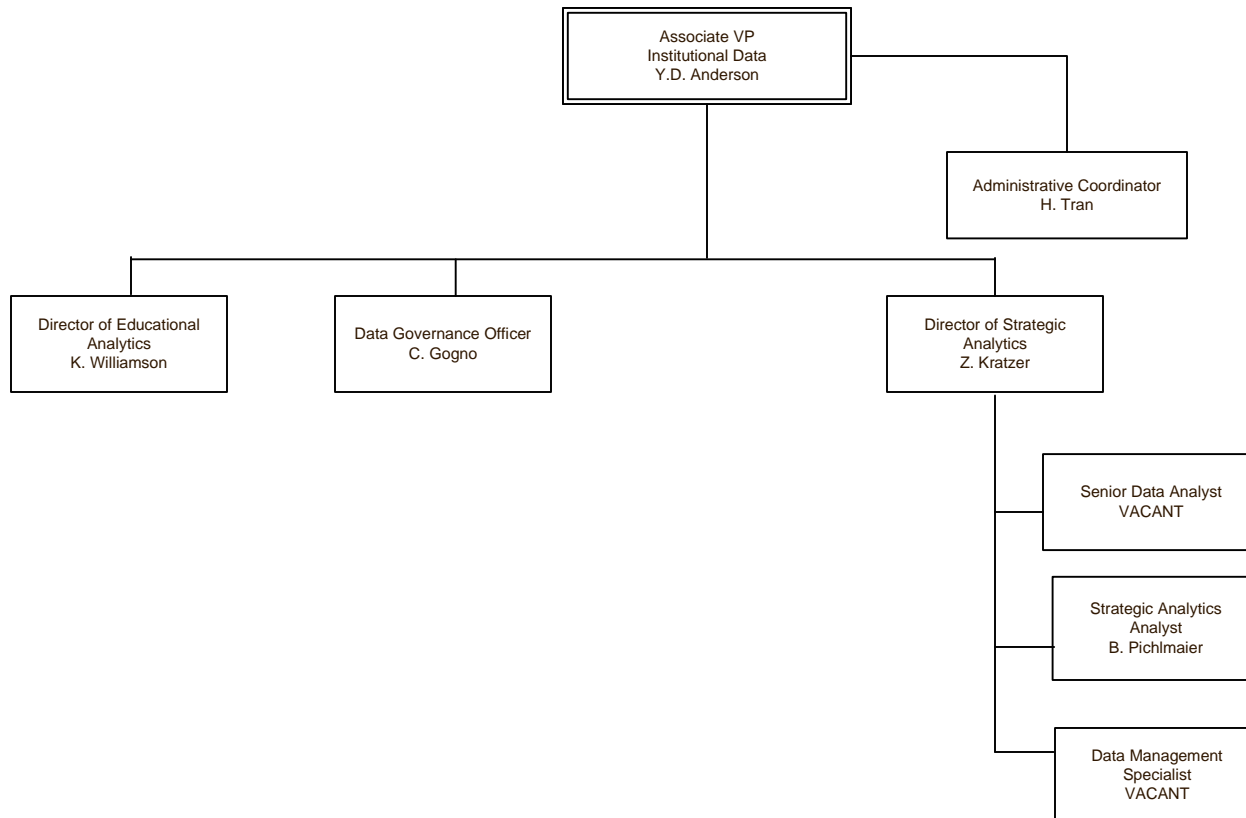


Organization Chart

Office of Institutional Data

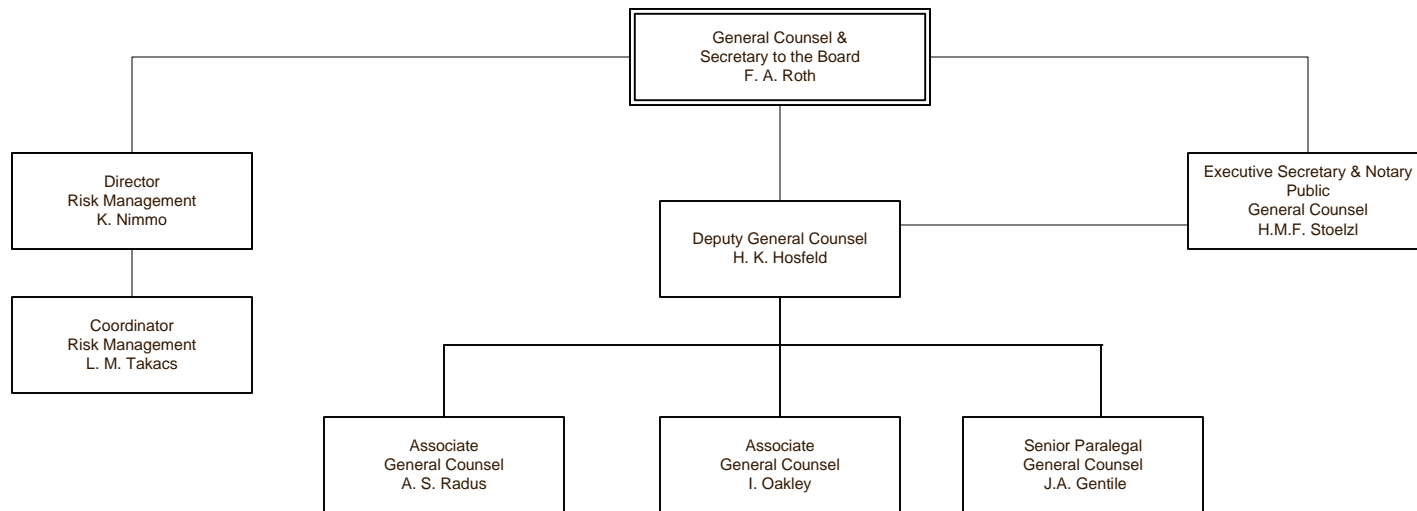
Last Update:
May 15, 2025

 Back



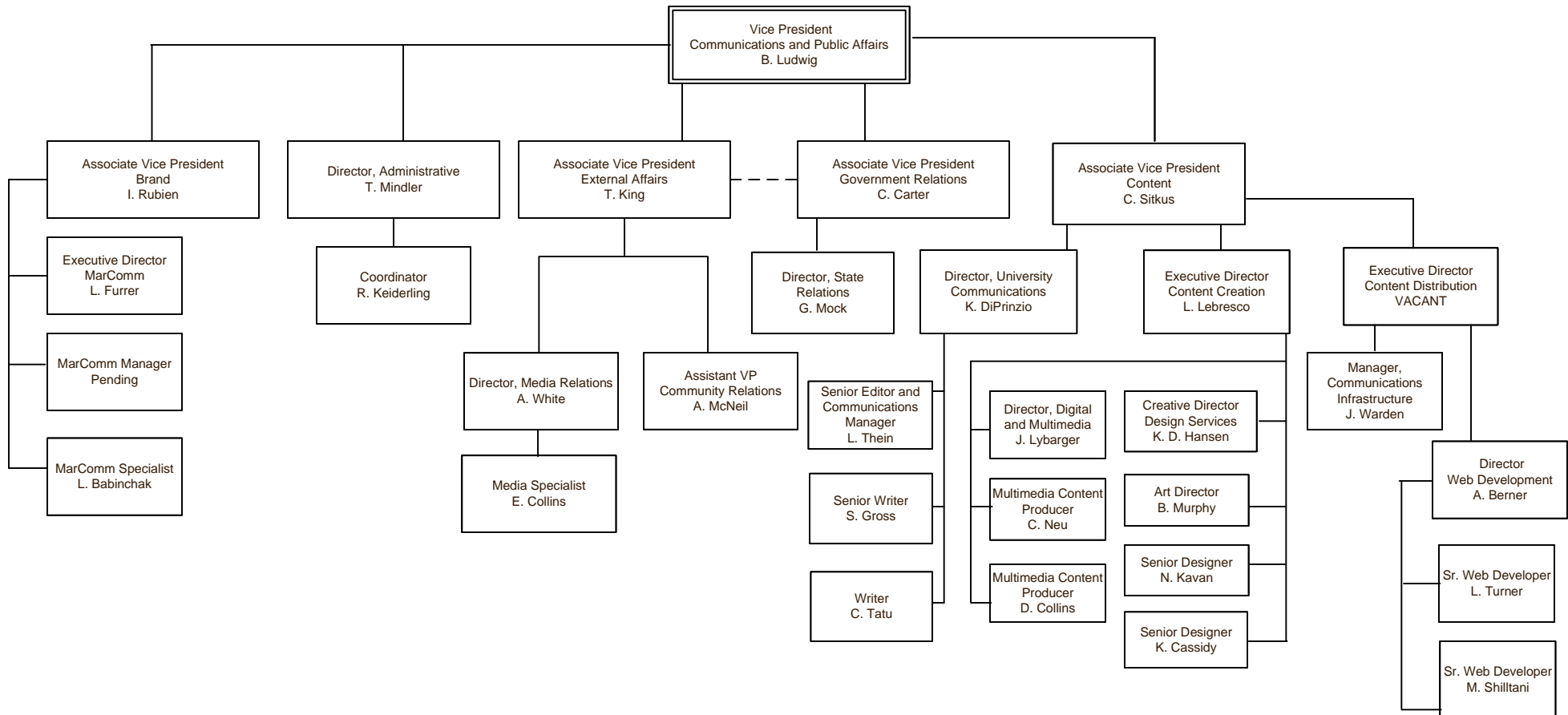
— Indicates direct report

General Counsel

 Back

————— Indicates direct report

Communications and Public Affairs

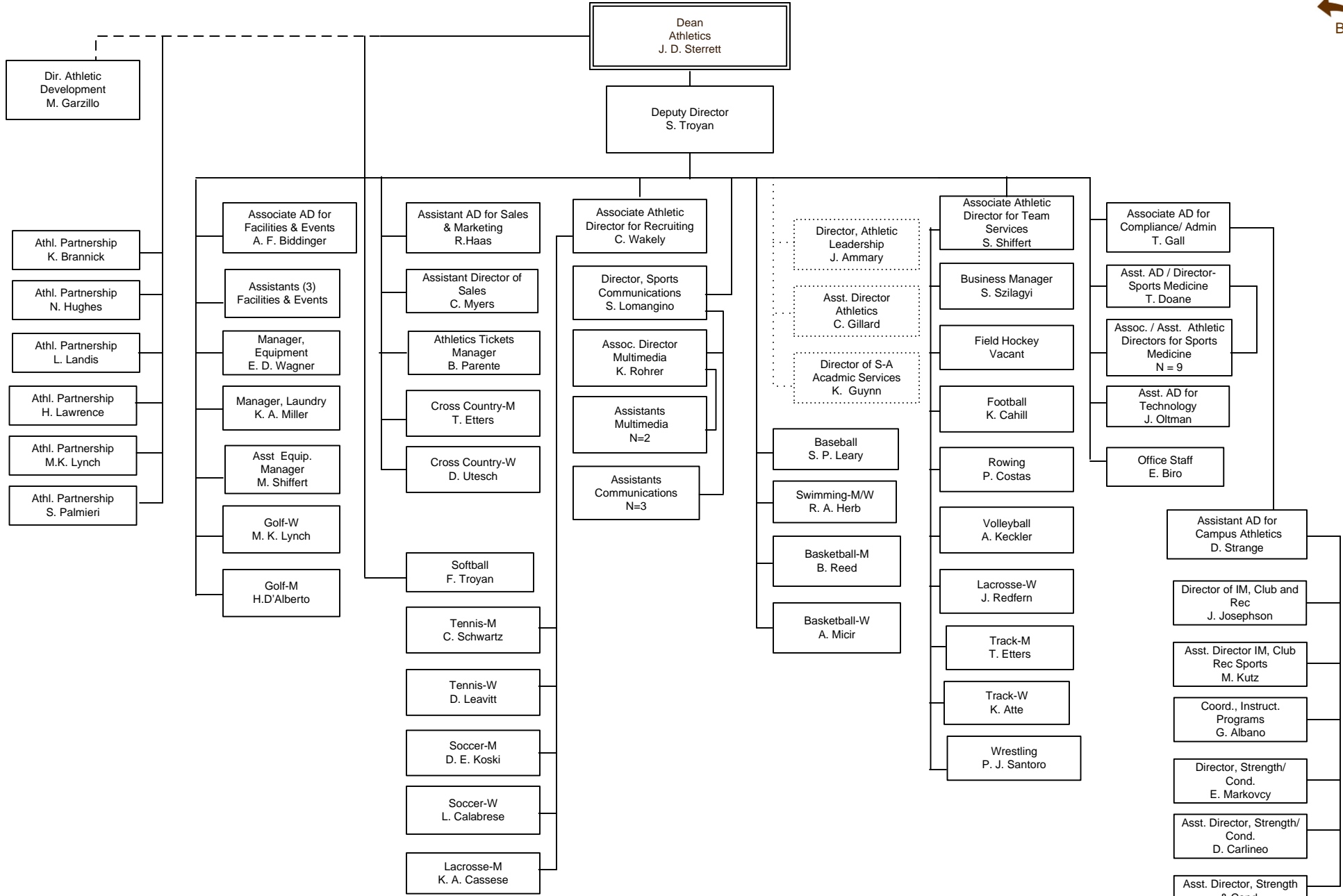




Organization Chart

Last Update:
January 13, 2023

Athletics



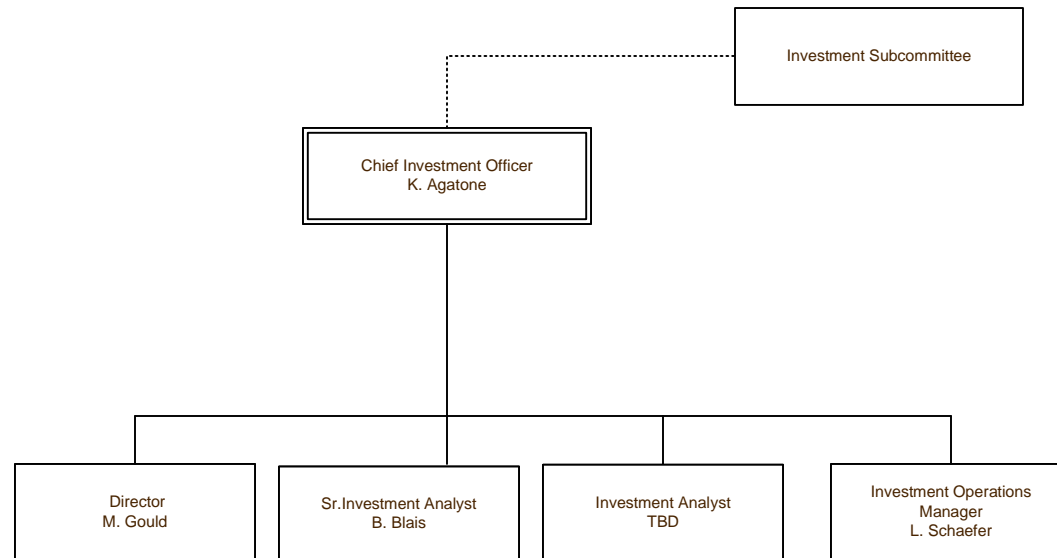
----- Indicates dual reporting line with another stem
 _____ Indicates direct report



Organization Chart

Last Update:
February 3, 2023

Investment Office



..... Indicates dual reporting line with another stem

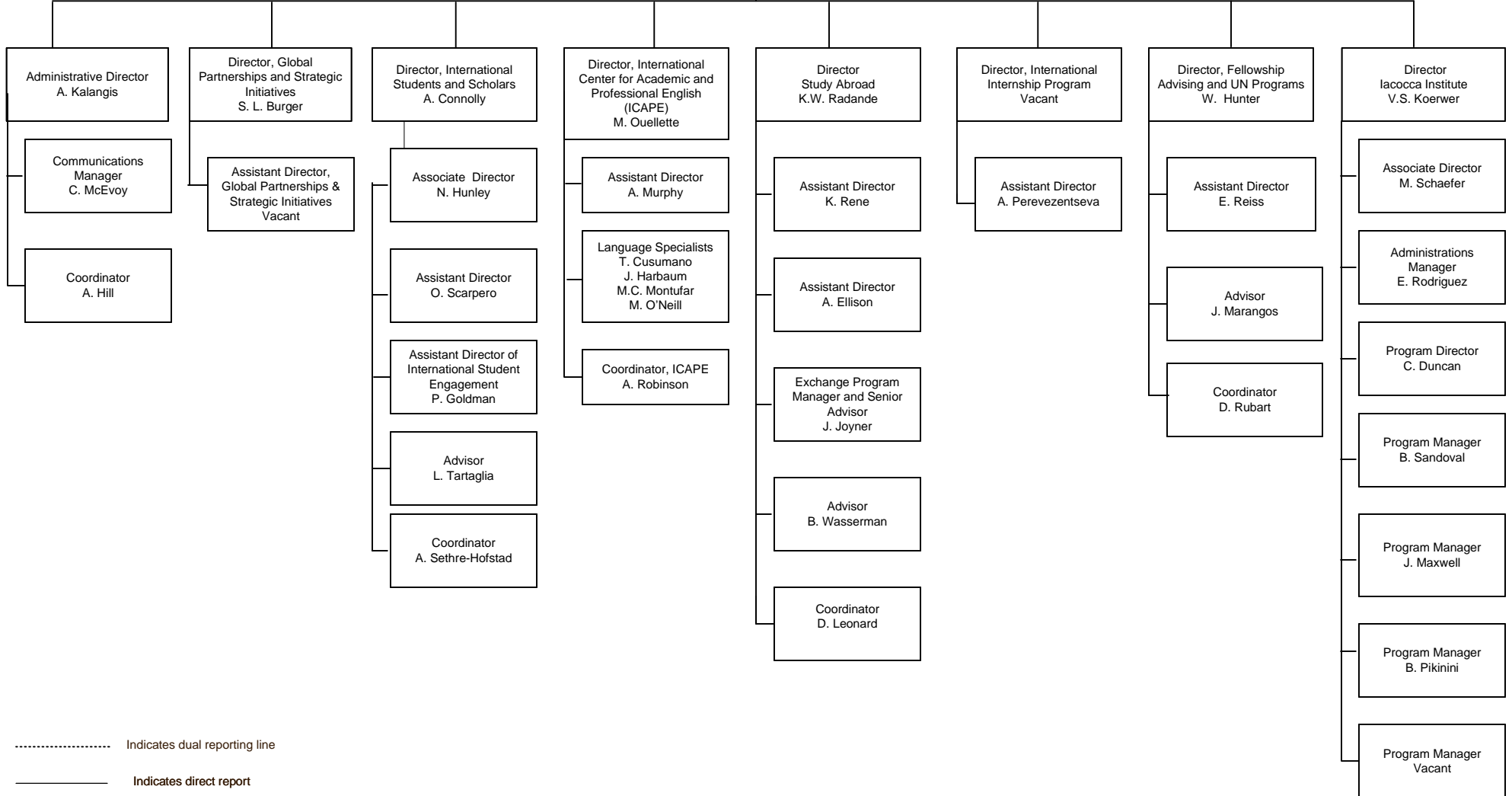
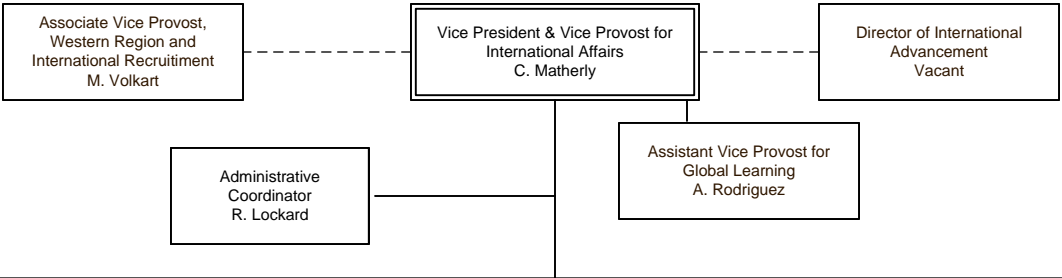
———— Indicates direct report



Organization Chart

International Affairs

Last Update:
April 23, 2025



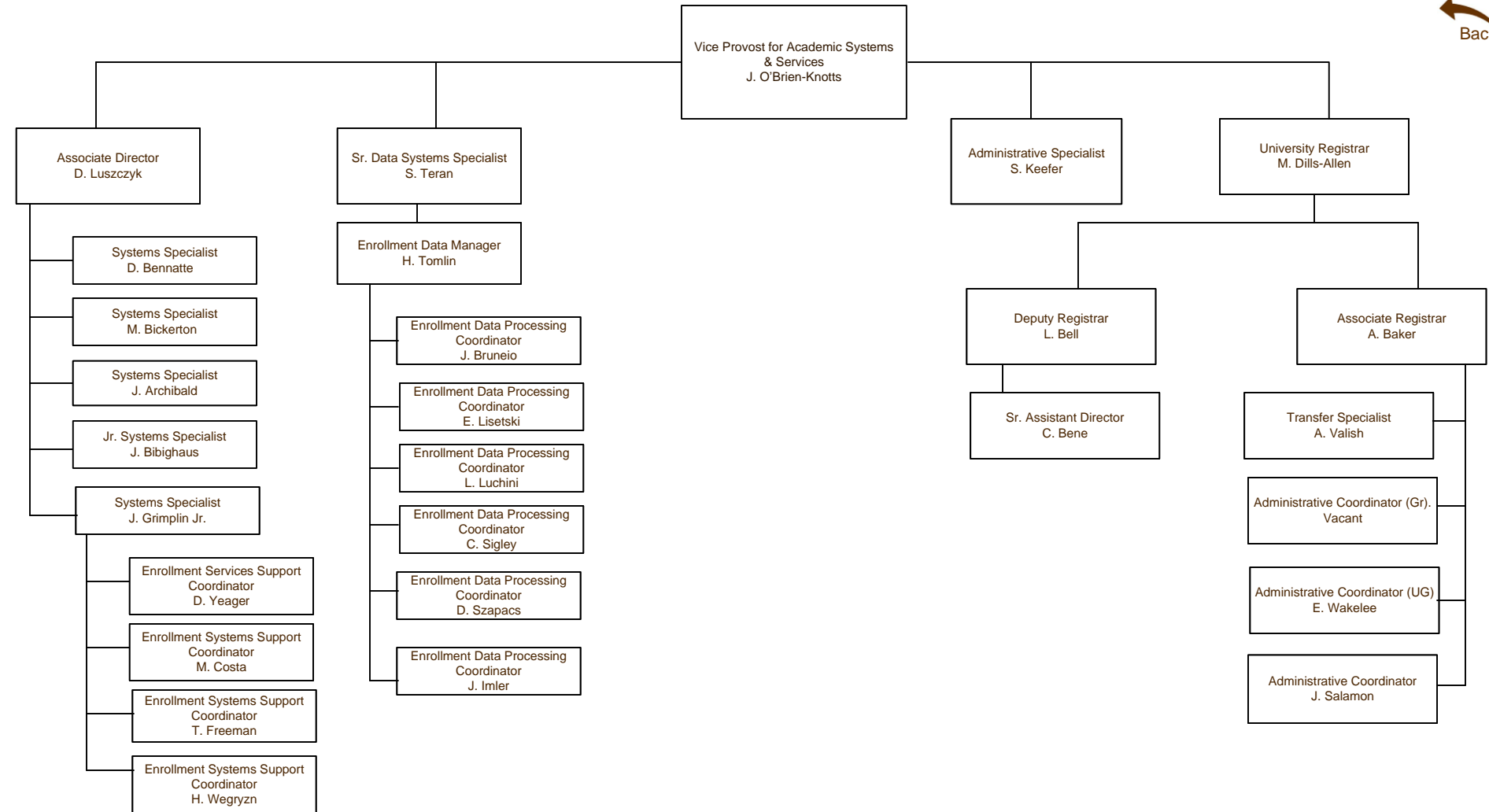
..... Indicates dual reporting line
 ————— Indicates direct report



Organization Chart

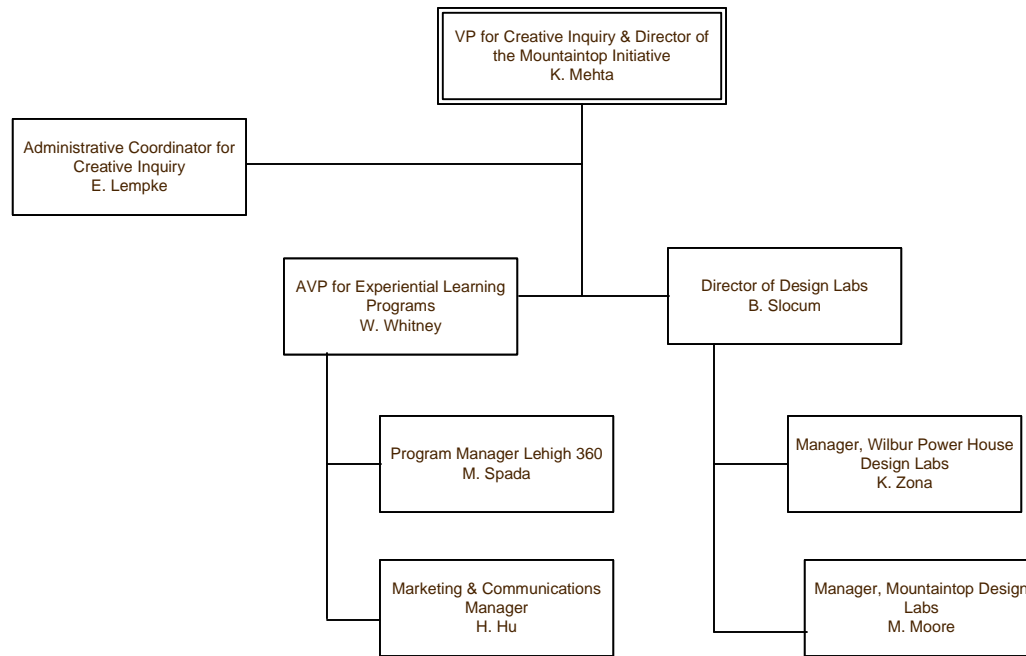
Academic Systems & Services

Last Update:
September 23, 2024



————— Indicates direct report

Creative Inquiry and The Mountaintop Initiative



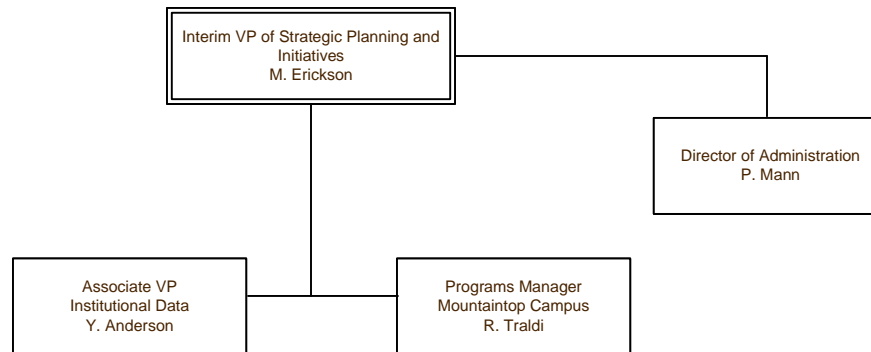
..... Indicates dual reporting line with another stem

———— Indicates direct report

Organization Chart

Office of Strategic Planning & Initiatives

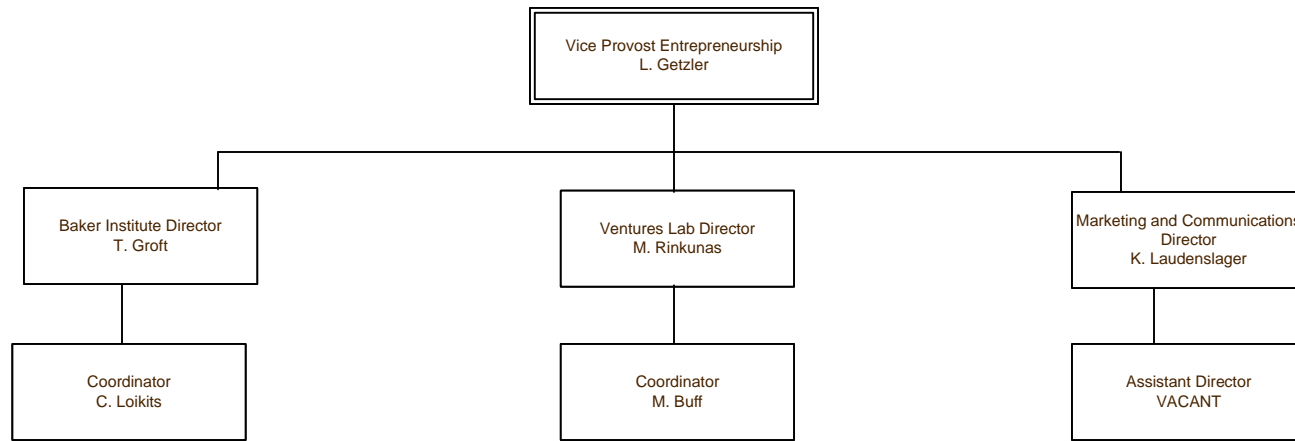
Last Update:
August 26, 2024



..... Indicates dual reporting line with another stem

———— Indicates direct report

Entrepreneurship



..... Indicates dual reporting line with another stem

———— Indicates direct report