

Fabricator Experience of Casting with EIT System

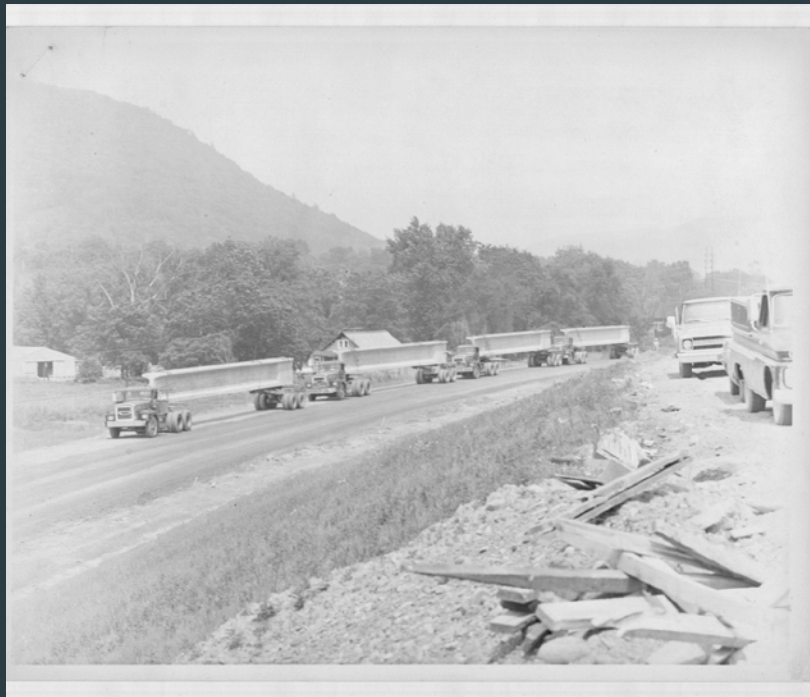
Troy M Jenkins, P.E.

Chief Engineer

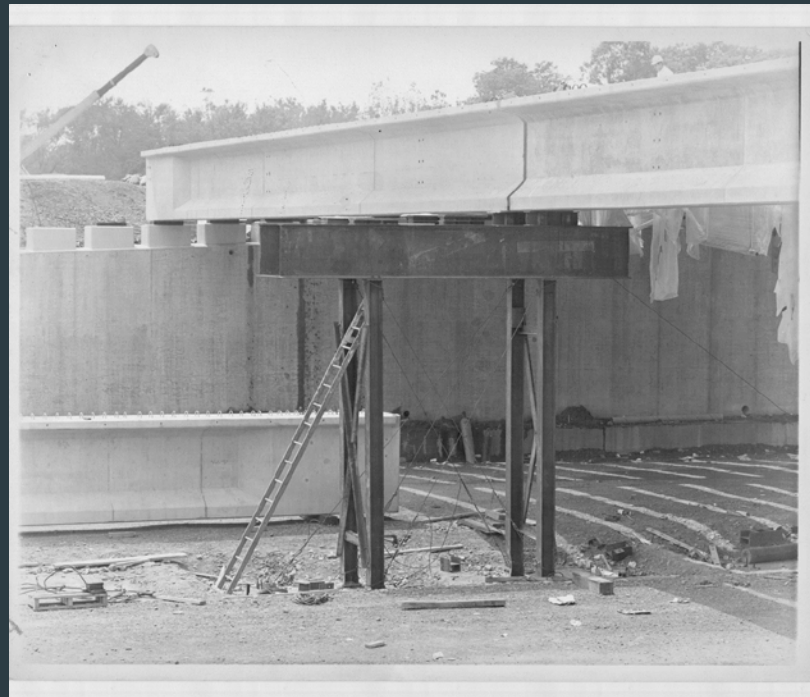
Northeast Prestressed Products, LLC

Northeast Prestressed Products, LLC.

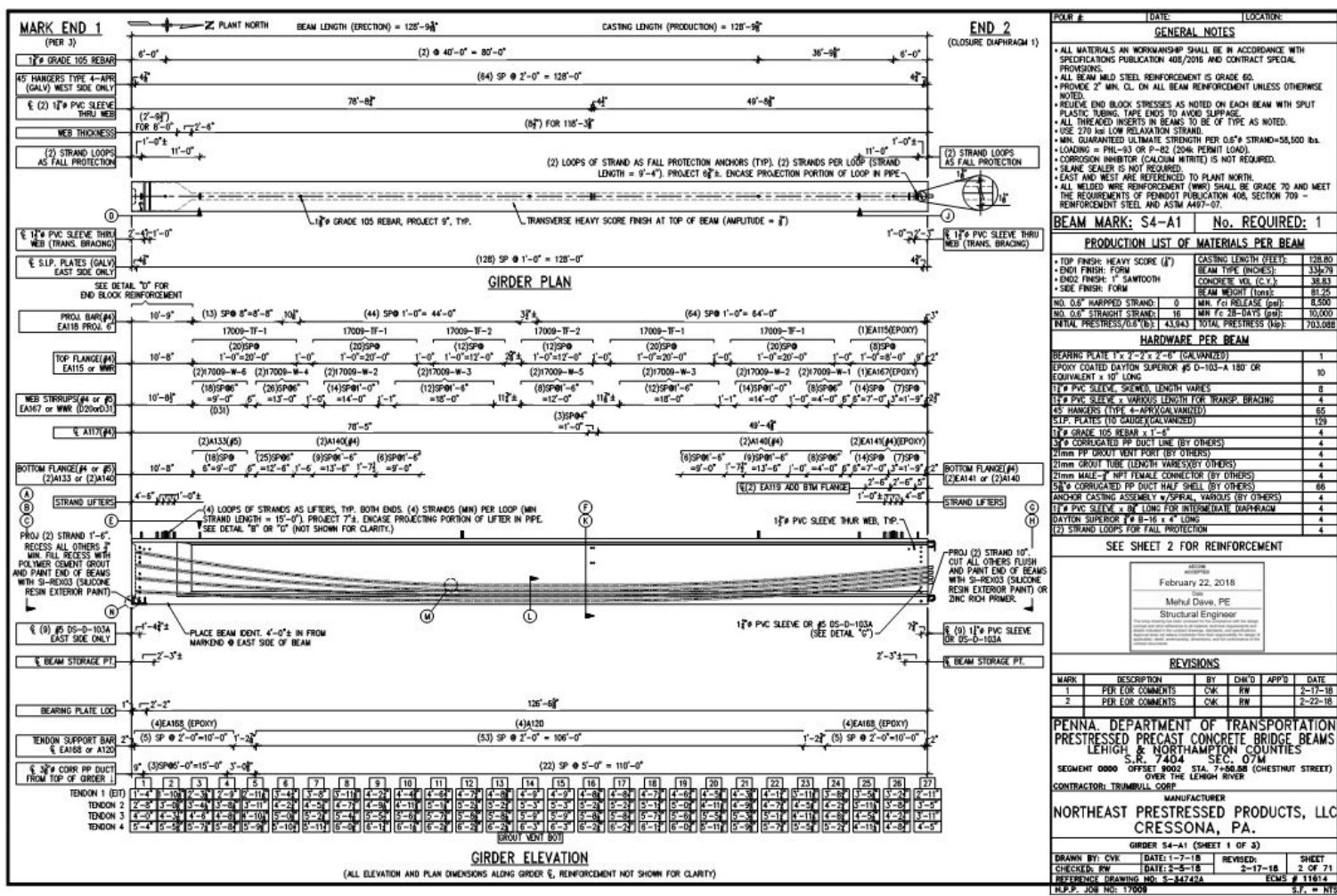
Oneonta NY, I-88, 1972



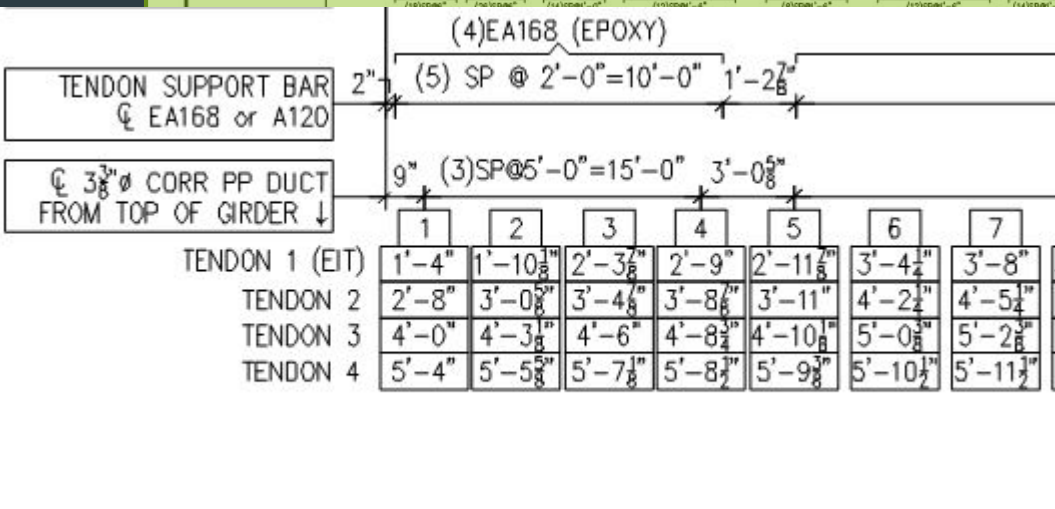
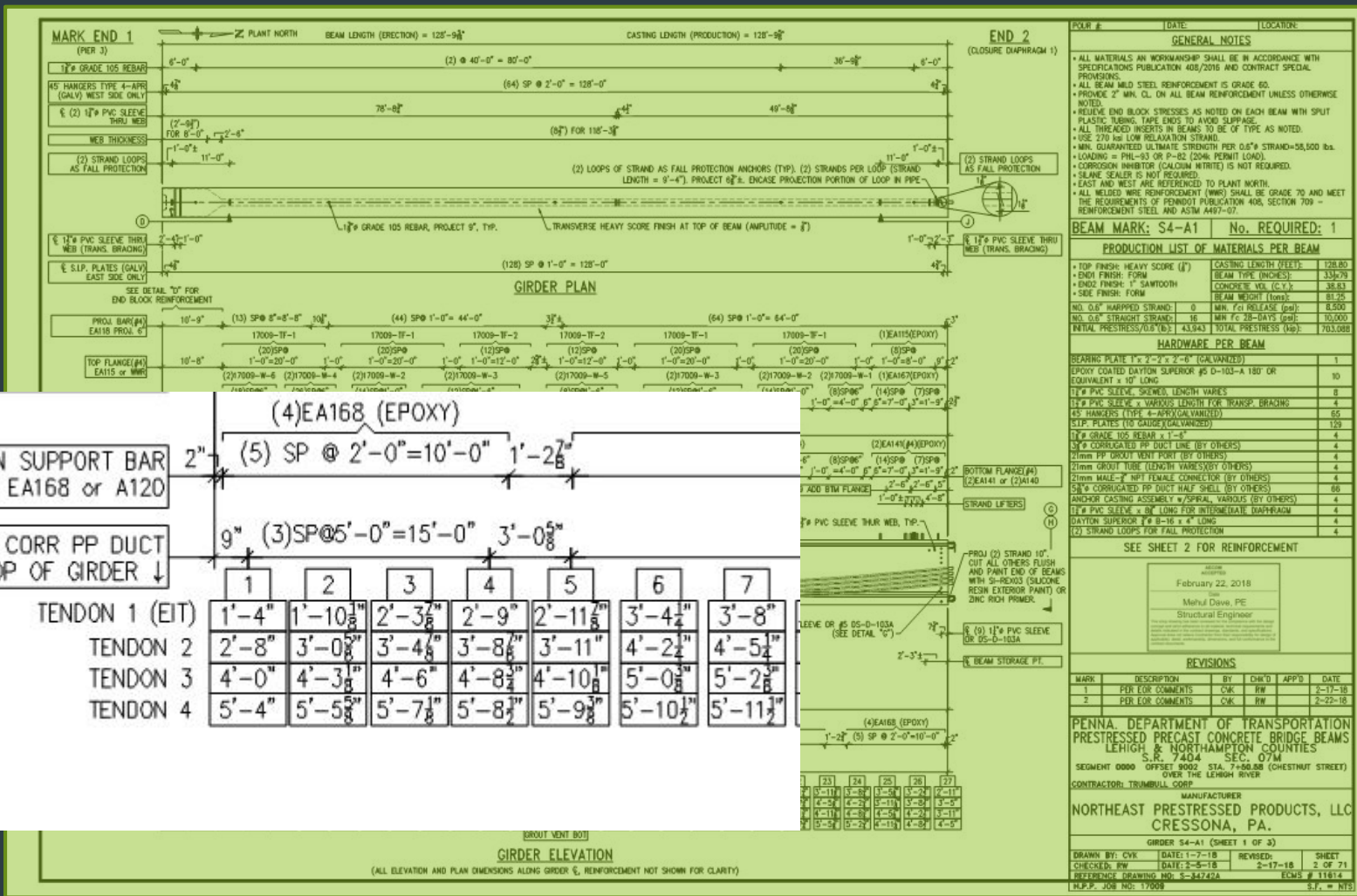
Midspan Match-cast splice;
epoxy joint

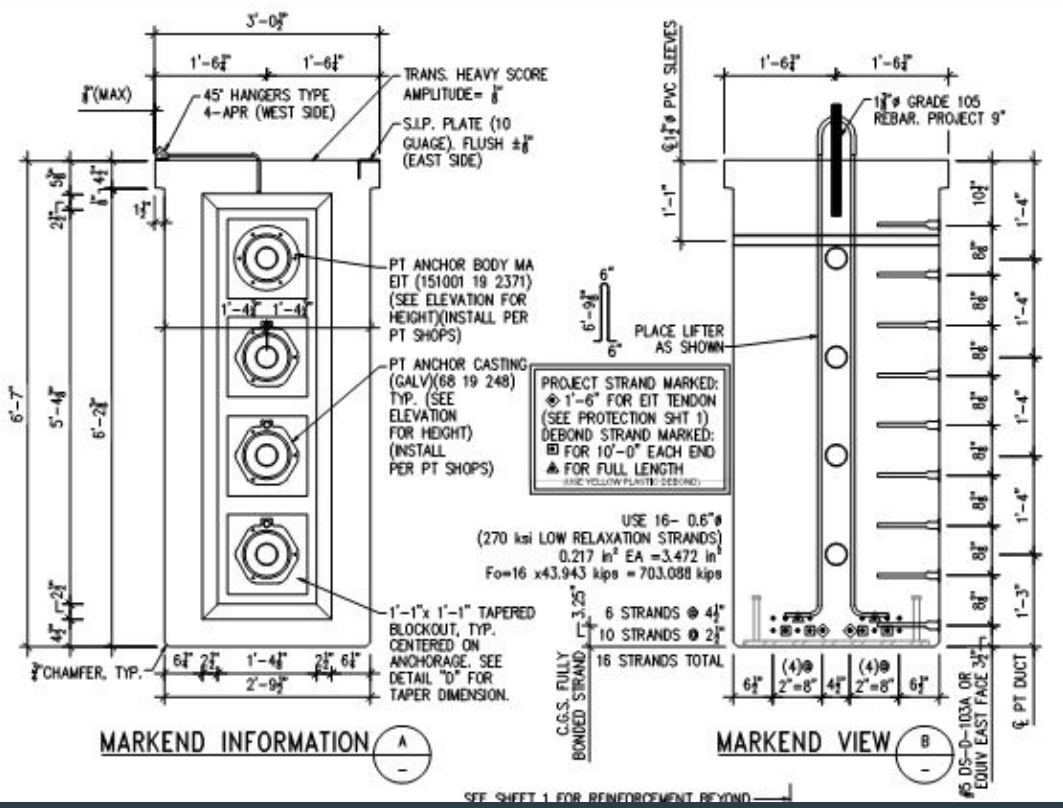


Shop Drawing



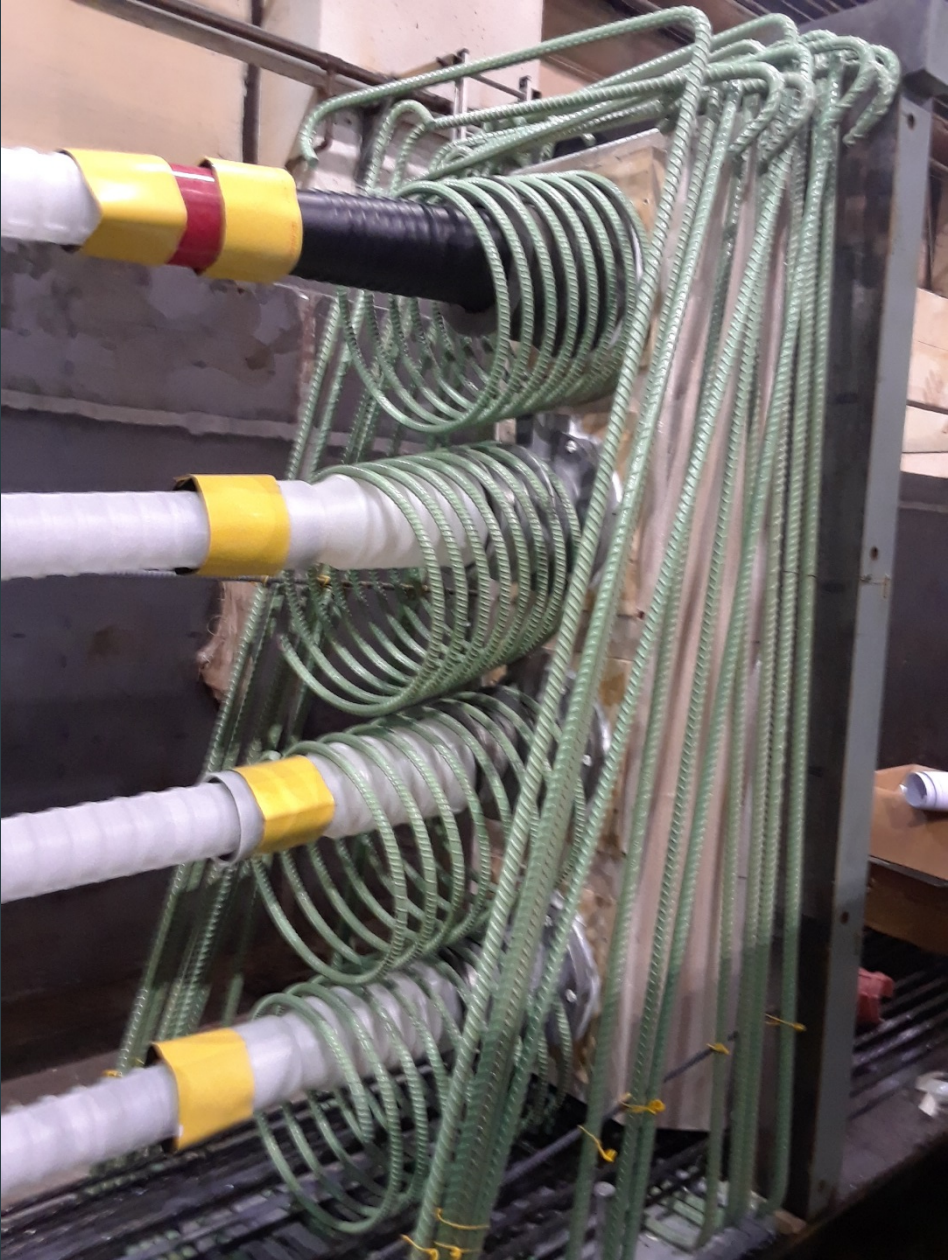
Shop Drawing

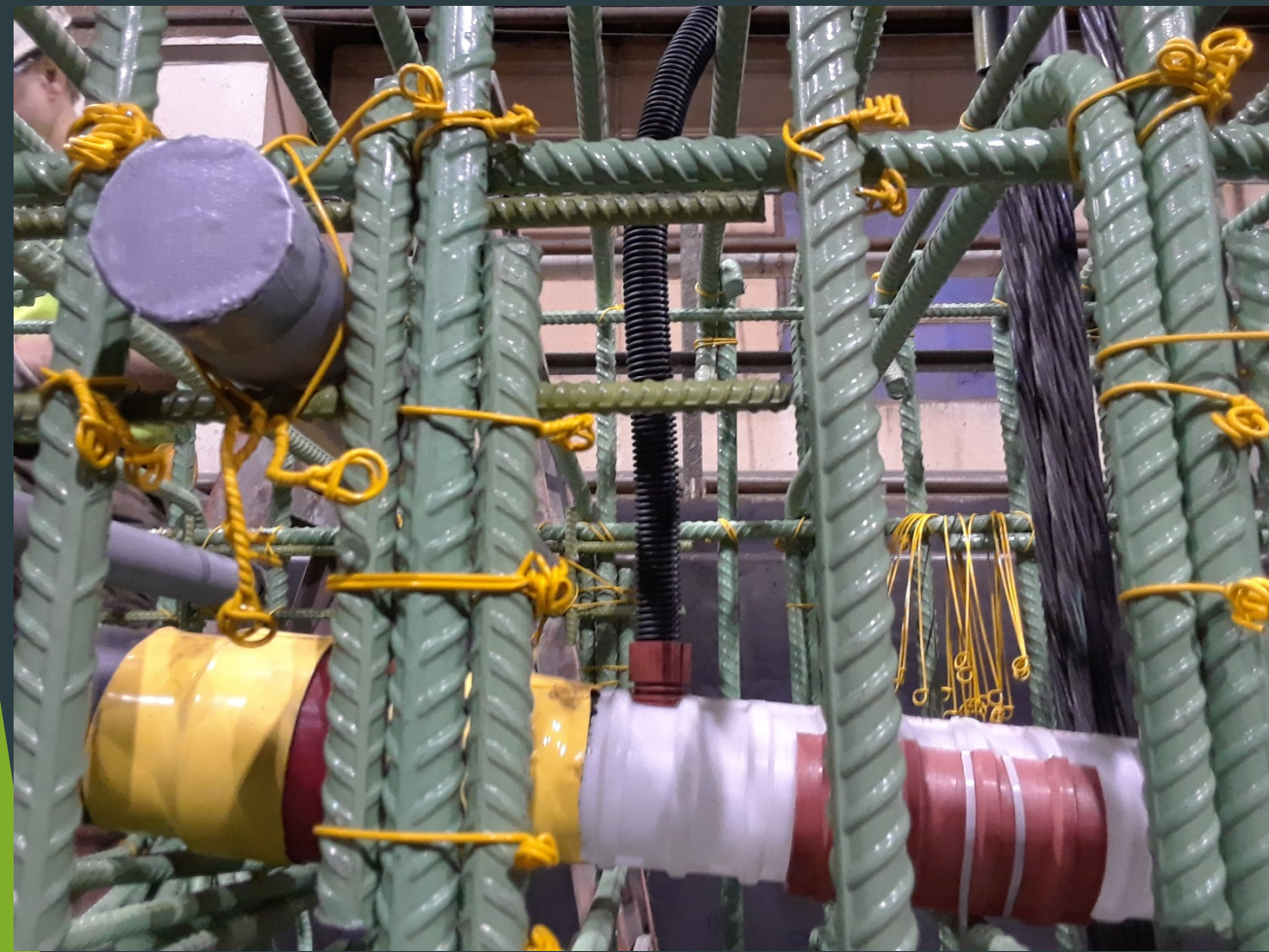




Duct Comparison

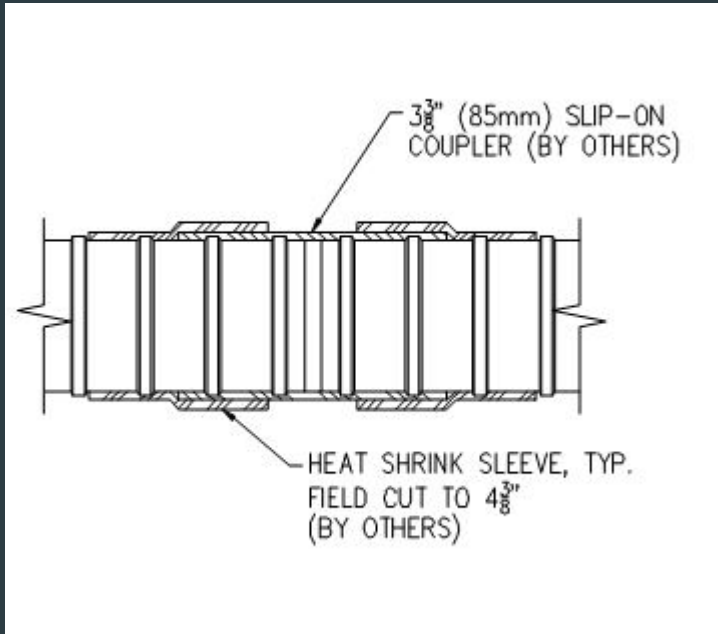






FHWA Workshop: EIT PT System: October 24th 2018: Lehigh University

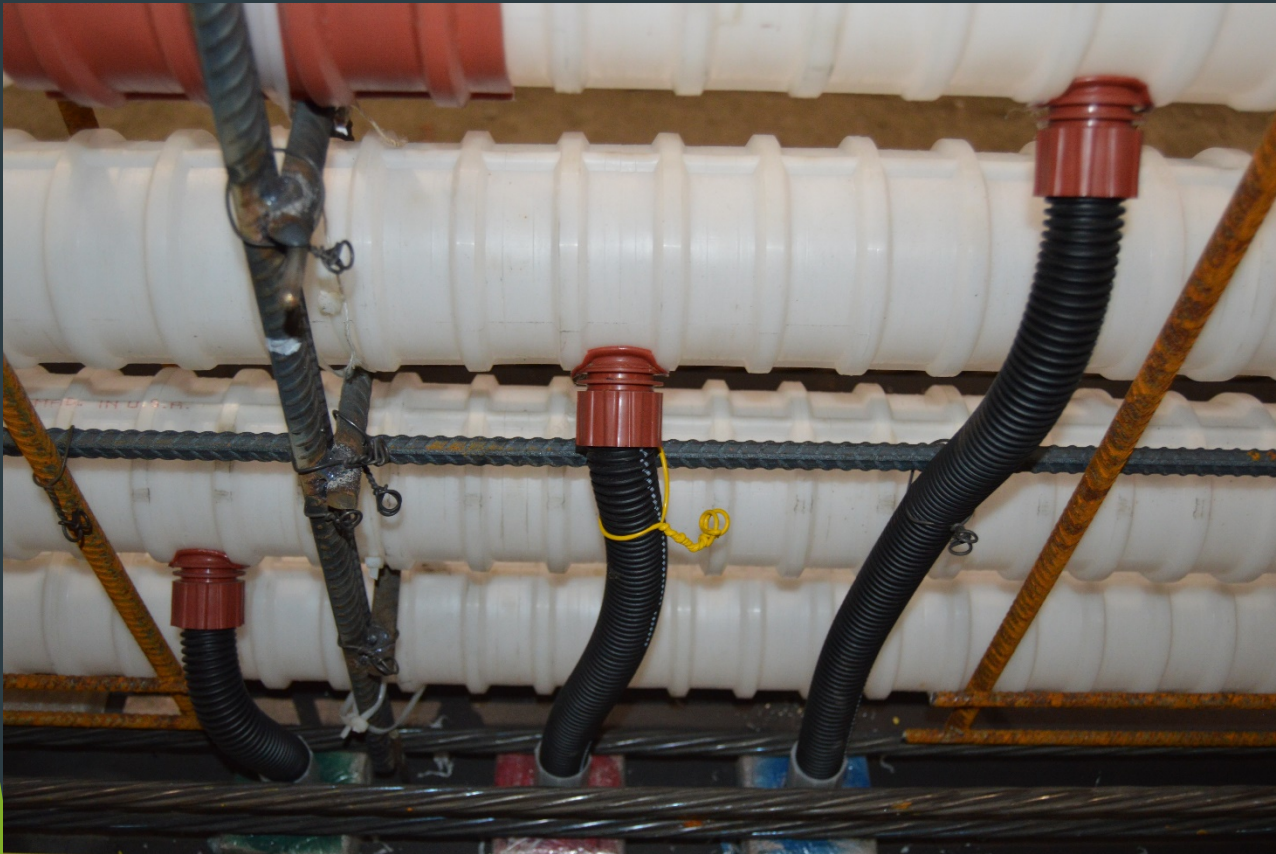
Duct Couplers



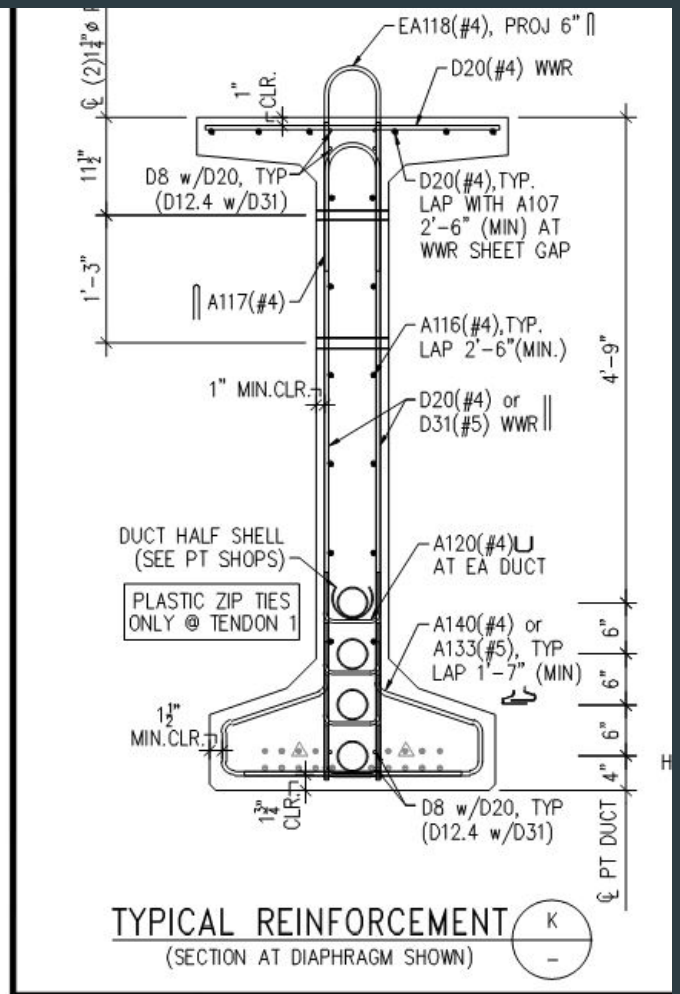
Vent Connection



Vent Routing



Half Shells





Haunch beam set up



Handling

Inside



Outside



Questions?

- ▶ Troy M. Jenkins, PE
tmjenkins@npp-llc.com
570-385-2352