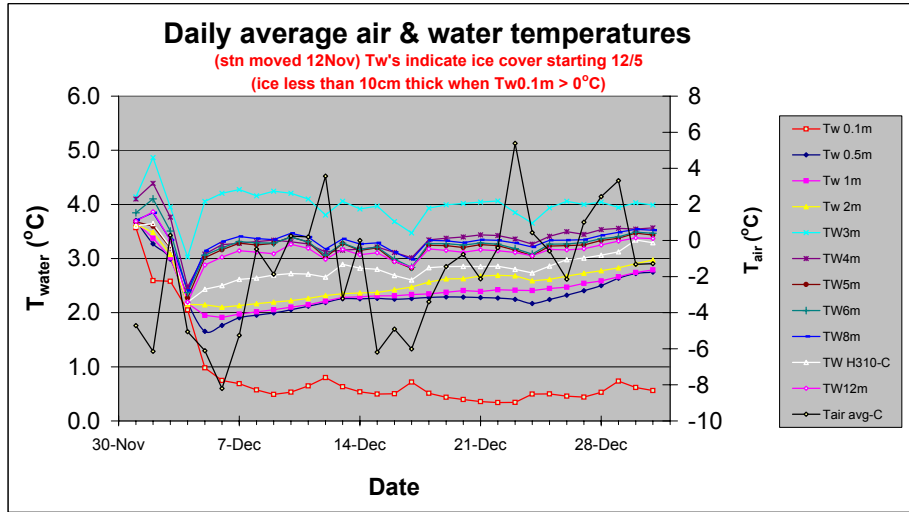
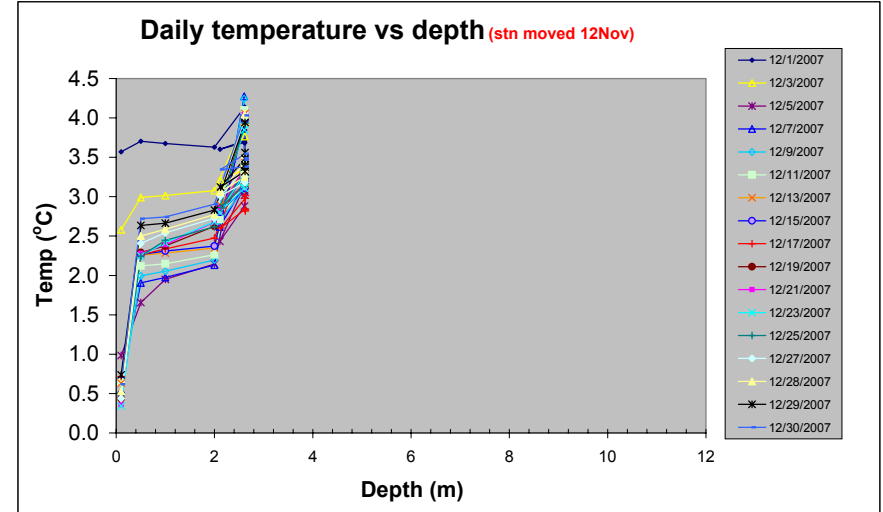


Year: 2007 Month: 12

Station moved to shallow water (ca. 2.5m max) at dock from lake center on 12 November 2007
 See figure to right for actual depths of temperature sensors when weather station is in shallow water.

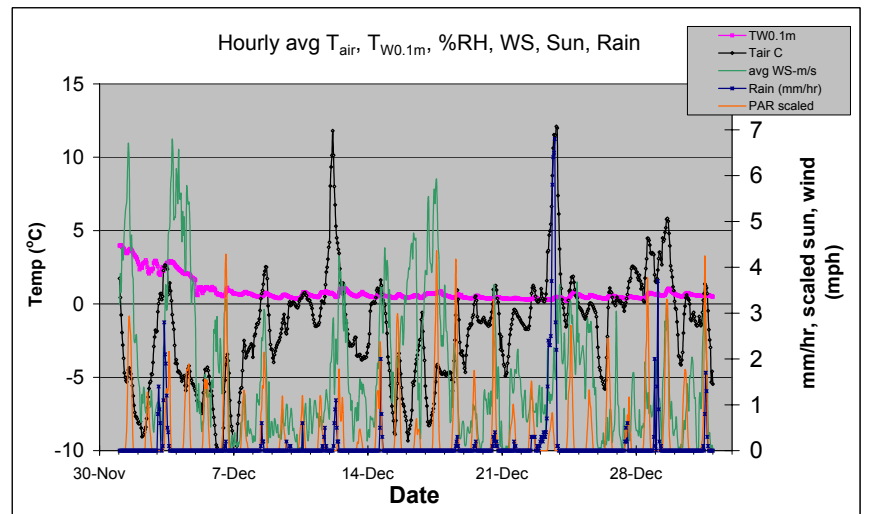
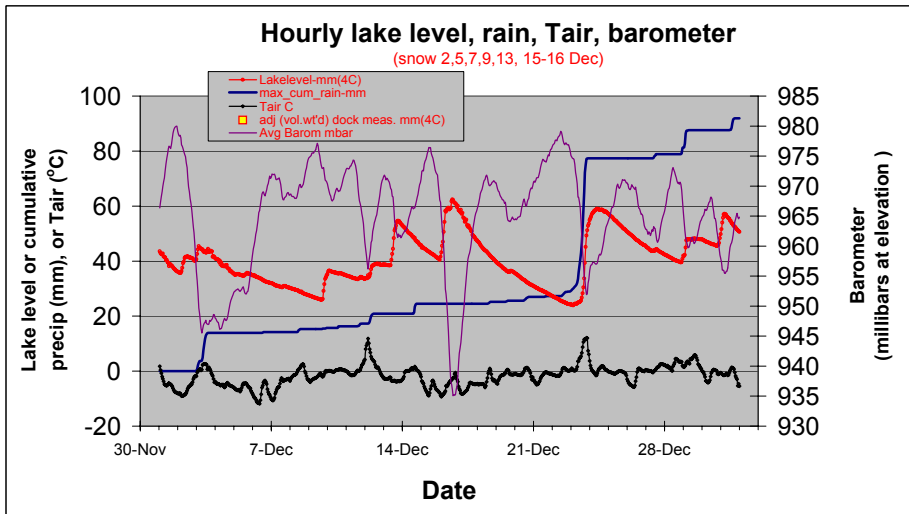


Tw12m sensor damaged on 21Apr07 (will need to replace it)



Lake level is mm above lower edge of dock metal frame (mm of water at 4°C based on pressure)
 Monthly rain to date: 3.62 inches Dock upper surface is at about 220 mm.

Precip from rain gage is underestimated during freezing conditions and appears late when air temperature rises above freezing. Lake level rise accurately reflects rain or the water equivalent of snow, plus runoff and snowmelt.



(°C), Wind (mph)