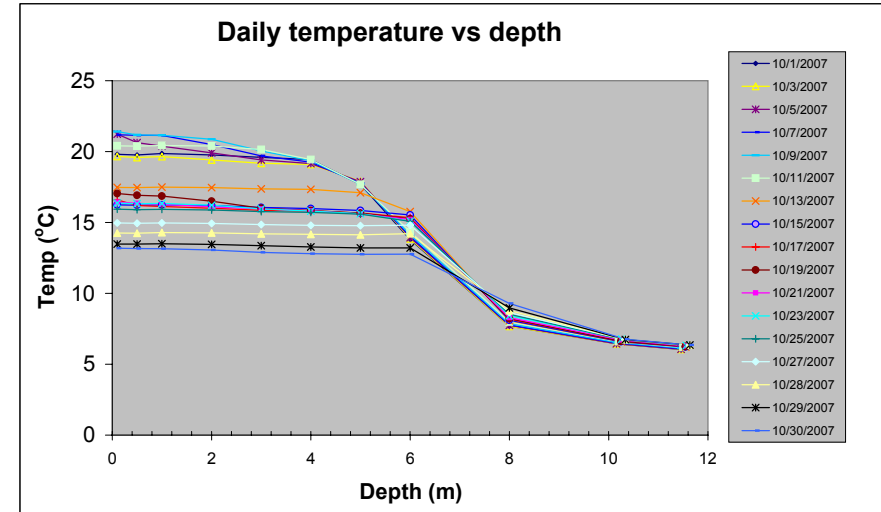
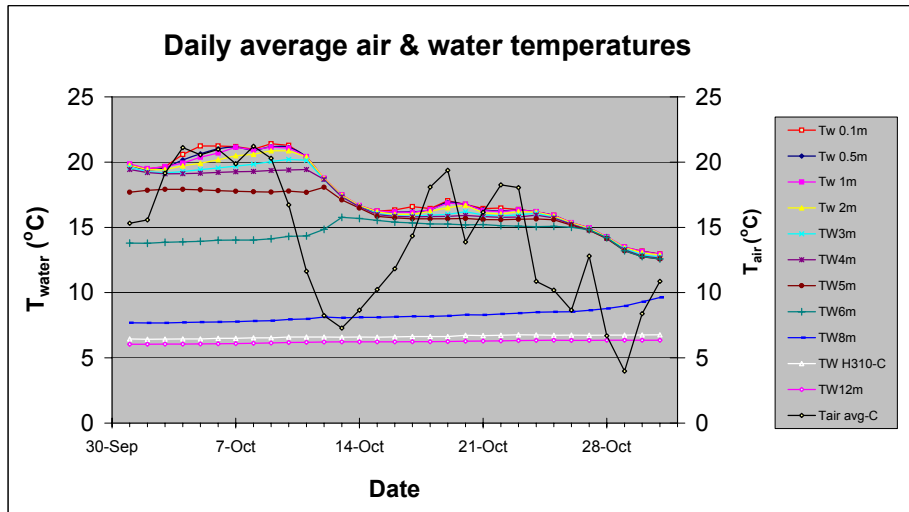


Year: 2007 Month: 10 PERIODIC MALFUNCTION OF Tw sensor multiplexor box (bad cable) starting 8pm 11Oct07, repaired 21Oct07

Station moved from shallow water (ca. 2.5m max) at dock to lake center on 21 April 2007
See figure to right for actual depths of temperature sensors when weather station is in shallow water.

Tw12m sensor damaged on 21Apr07 (will need to replace it)



Lake level is mm above lower edge of dock metal frame (mm of water at 4°C based on pressure)
Monthly rain to date: 6.21 inches Dock upper surface is at about 220 mm.

Precip from rain gage is underestimated during freezing conditions and appears late when air temperature rises above freezing. Lake rise reflects rain or the water equivalent of snow, plus runoff and snowmelt.

