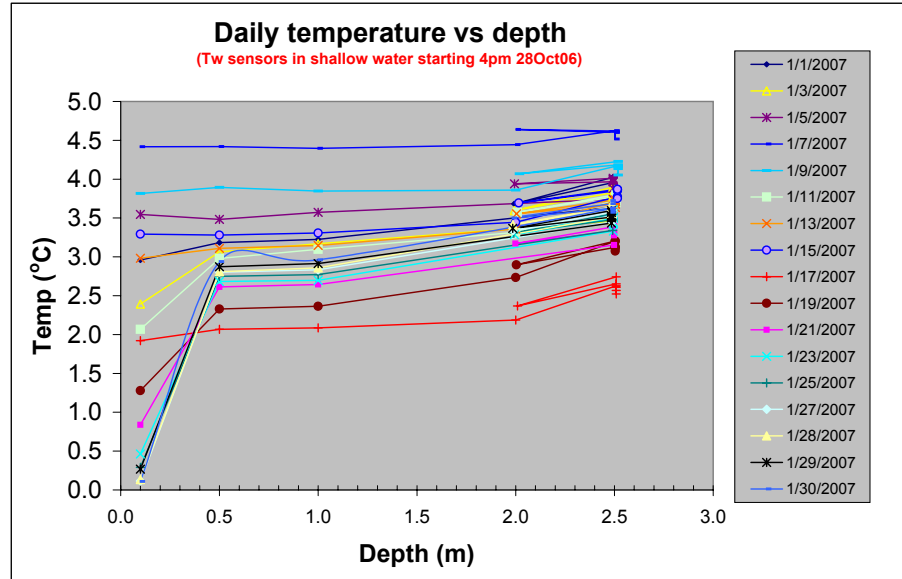
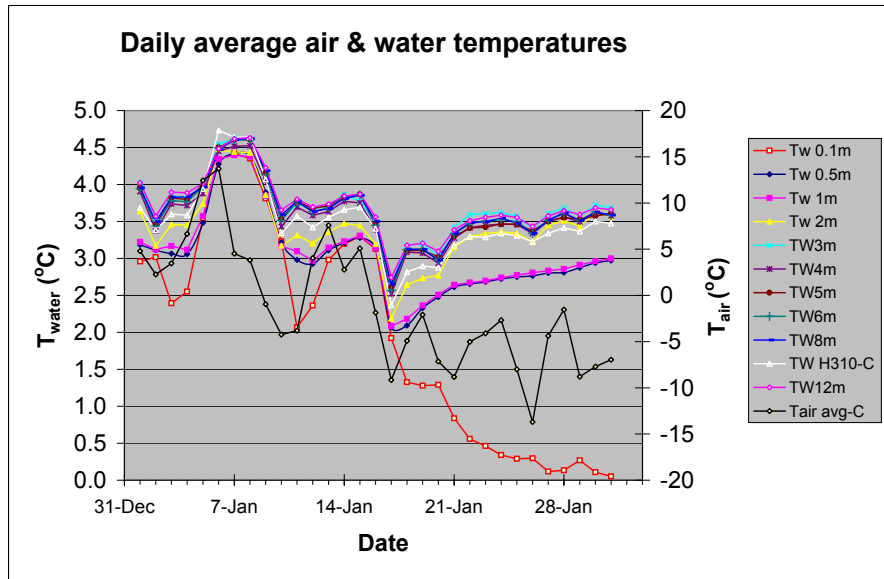


**Year: 2007 Month: 1** Lake appears to have complete ice cover on 1 Feb07 because surface T has reached 0oC and did not vary with high wind.

Station moved to shallow water (ca. 2.5m max) at dock from lake center on 29 October 2006

See figure to right for actual depths of temperature sensors when weather station is in shallow water.



Lake level is mm above lower edge of dock metal frame (mm of water at 4°C based on pressure)  
 Monthly rain to date: 2.6 inches

Precip from rain gage is underestimated during freezing conditions and appears late when air temperature rises above freezing. Lake rise reflects rain or the water equivalent of snow, plus runoff and snowmelt.

