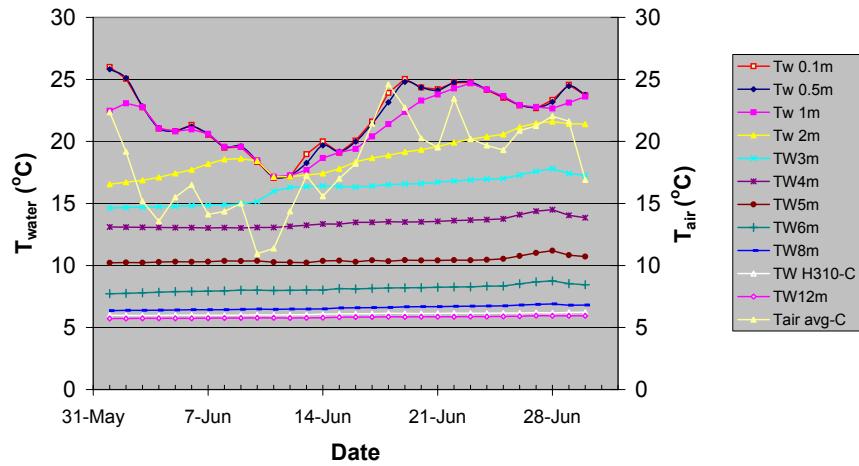


Year: 2006 Month: 6

Station moved to lake center from shallow water (ca. 2.5m max) at dock on 5 May 2006
 See figure to right for actual depths of temperature sensors when weather station is in shallow water.

Daily average air & water temperatures

(Tw sensors in deep water starting 3pm 5May06)

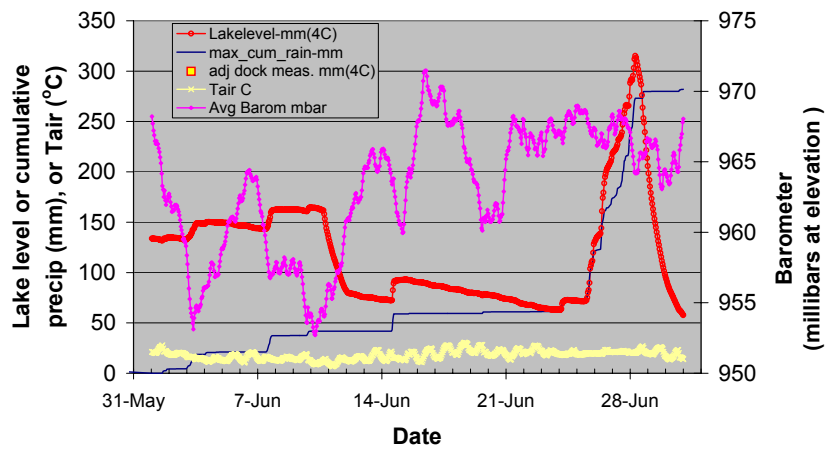


Lake level is mm above lower edge of dock metal frame (mm of water at 4°C based on pressure)
 Monthly rain to date: 11.1 inches (note, 8.6" from 6/24-6/28)

Precip from rain gage is underestimated during freezing conditions and appears late when air temperature rises above freezing. Lake rise reflects rain or the water equivalent of snow, plus runoff and snowmelt.

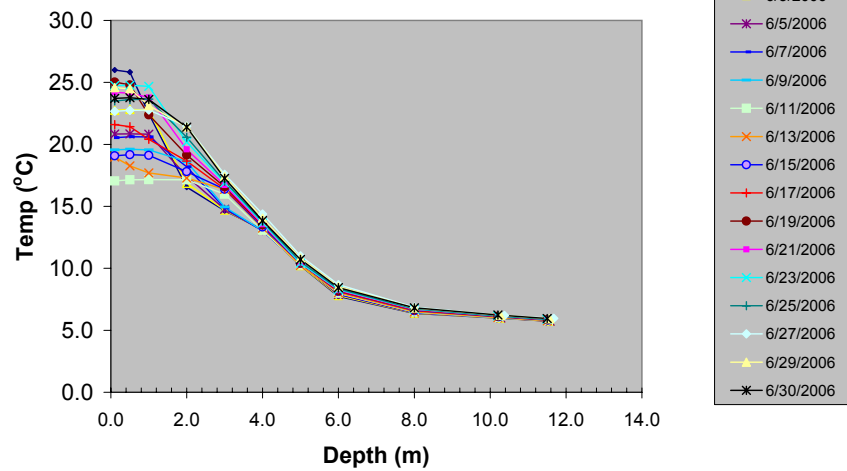
Hourly lake level, rain, Tair, barometer

(Lacawac personnel disrupted of beaver dam on 10 and 28 June)



Daily temperature vs depth

(Tw sensors in deep water starting 3pm 5May06)



Hourly avg Tair, TW0.1, %RH, WS

