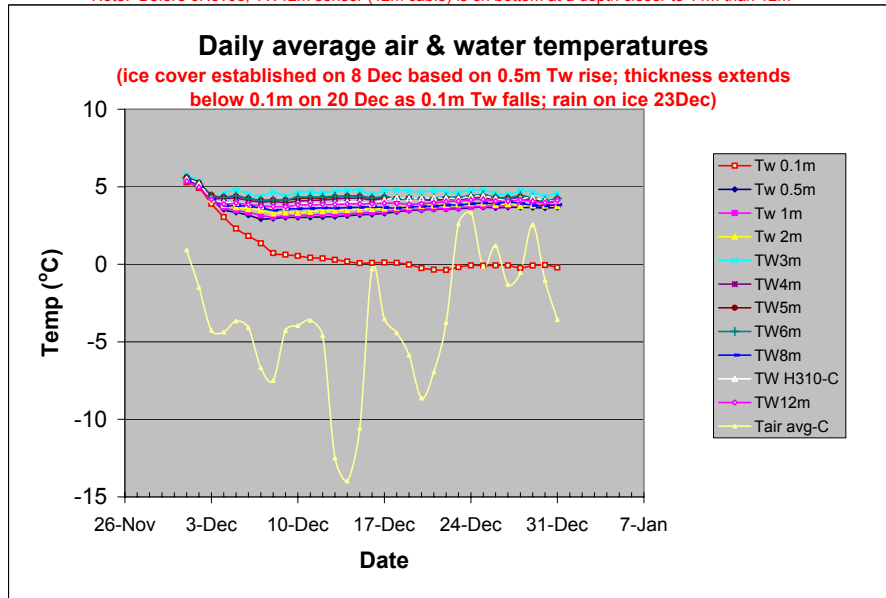
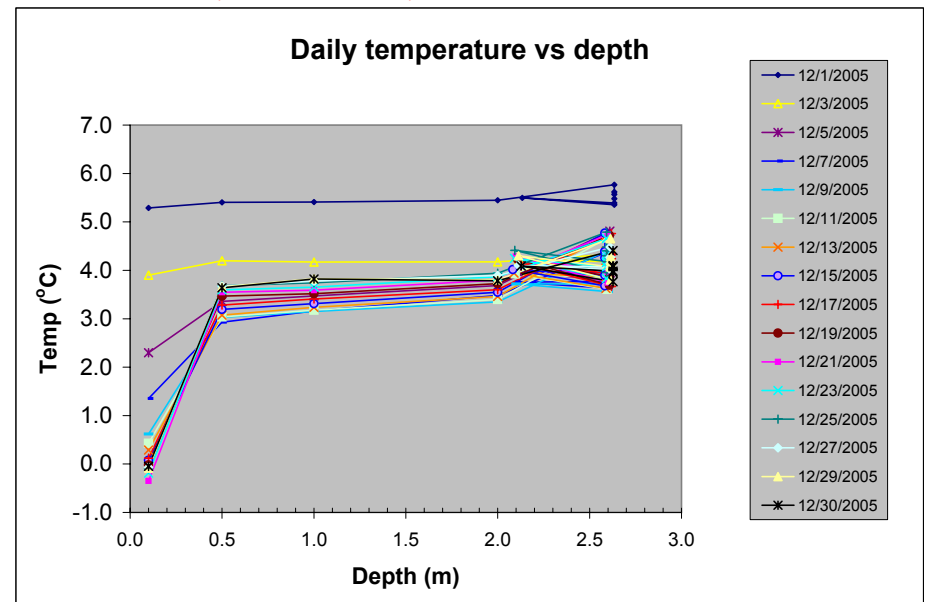


Year: 2005 Month: 12

Station moved from lake center to shallow water (ca. 2.5m max) at dock on 6 November
 Note: Before 6Nov05, TW12m sensor (12m cable) is on bottom at a depth closer to 11m than 12m



After 6Nov05, deep sensors are at bottom depth of ca. 2.5m



Level level mm above lower edge of dock metal frame (mm of water at 4°C based on pressure)
 Monthly rain to date: 1.8 inches
 (precip from rain gage underestimated with freezing conditions; lake rise is water equivalent of snow)

